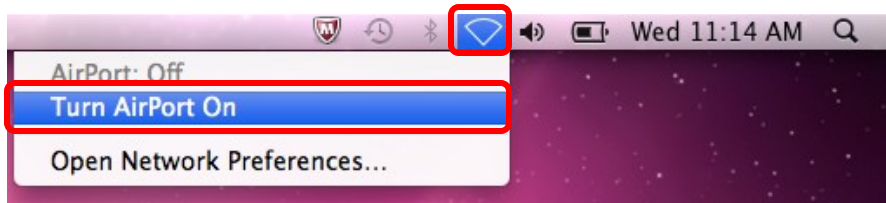
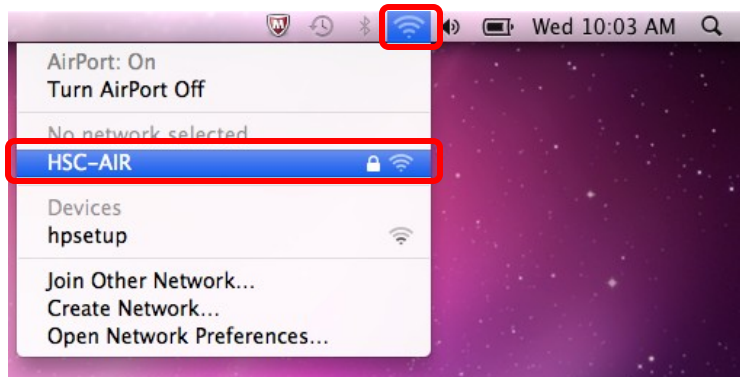


TTUHSC HSC-AIR Connection Settings for Mac OS 10.6 (Snow Leopard)

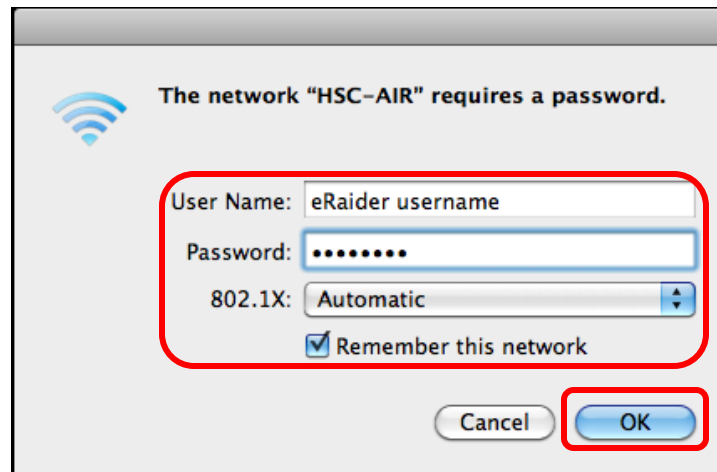
1. Click on the AirPort icon and select **Turn AirPort ON** if it is available.



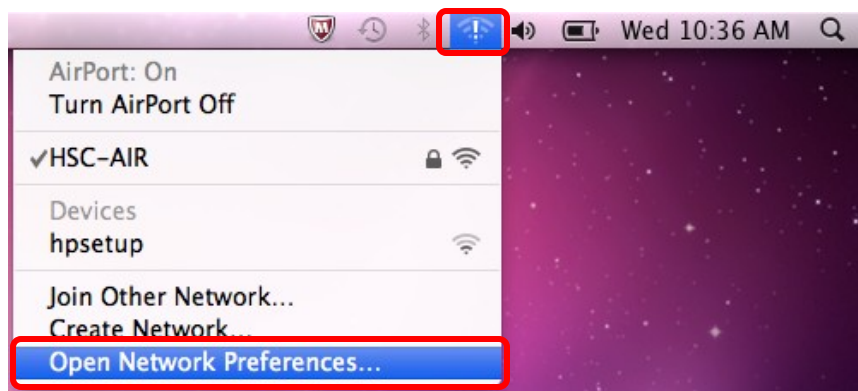
2. Click on the AirPort icon and select **HSC-AIR**.



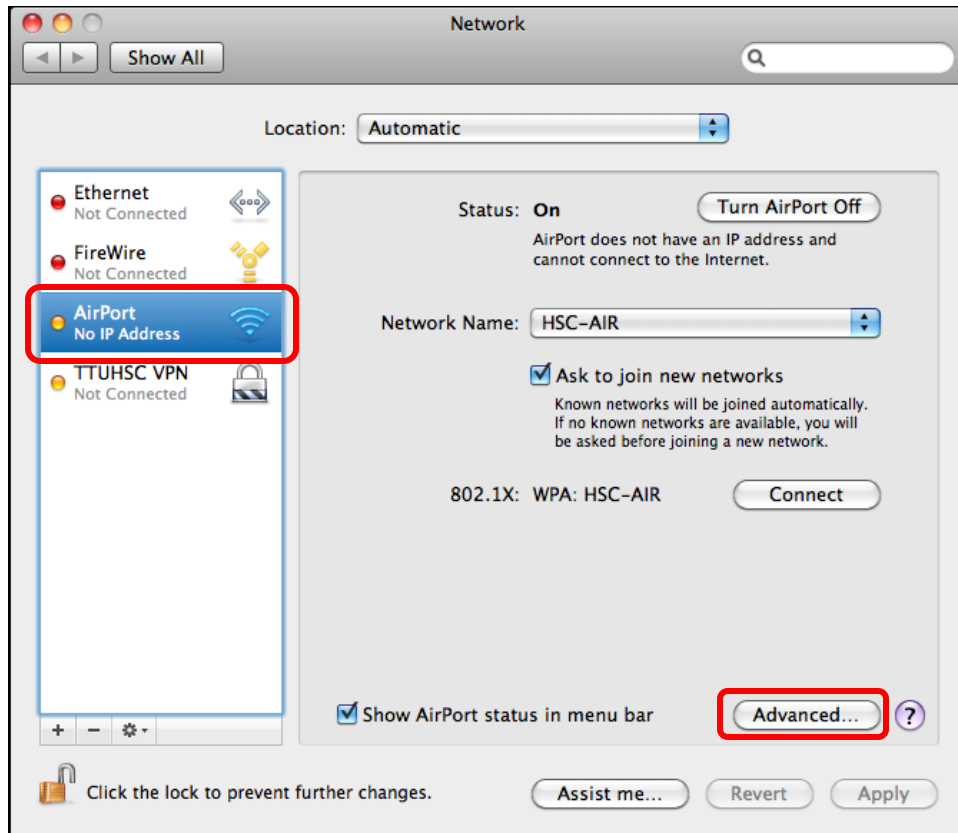
3. Then for **User name:** enter your eRaider username, and for **Password:** enter your eRaider password. **802.1X** should be set to **Automatic**, then click **OK**.



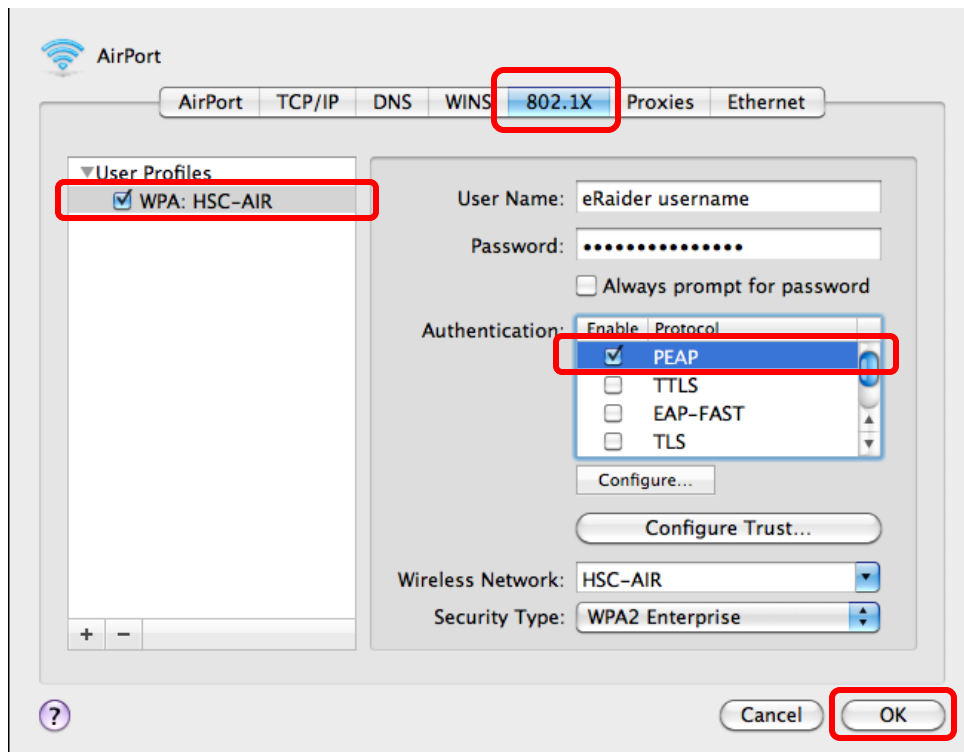
4. Click on the AirPort icon and select **Open Network Preferences...** if it is available.



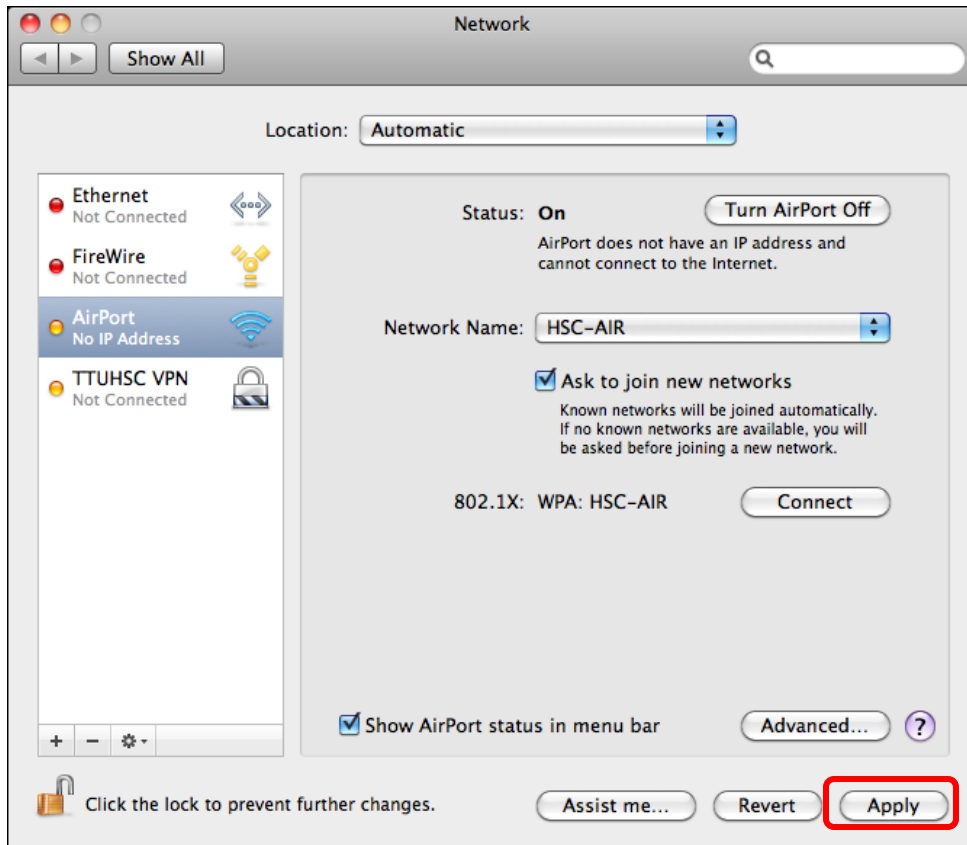
5. With **AirPort** selected on the left, click on the **Advanced...** button.



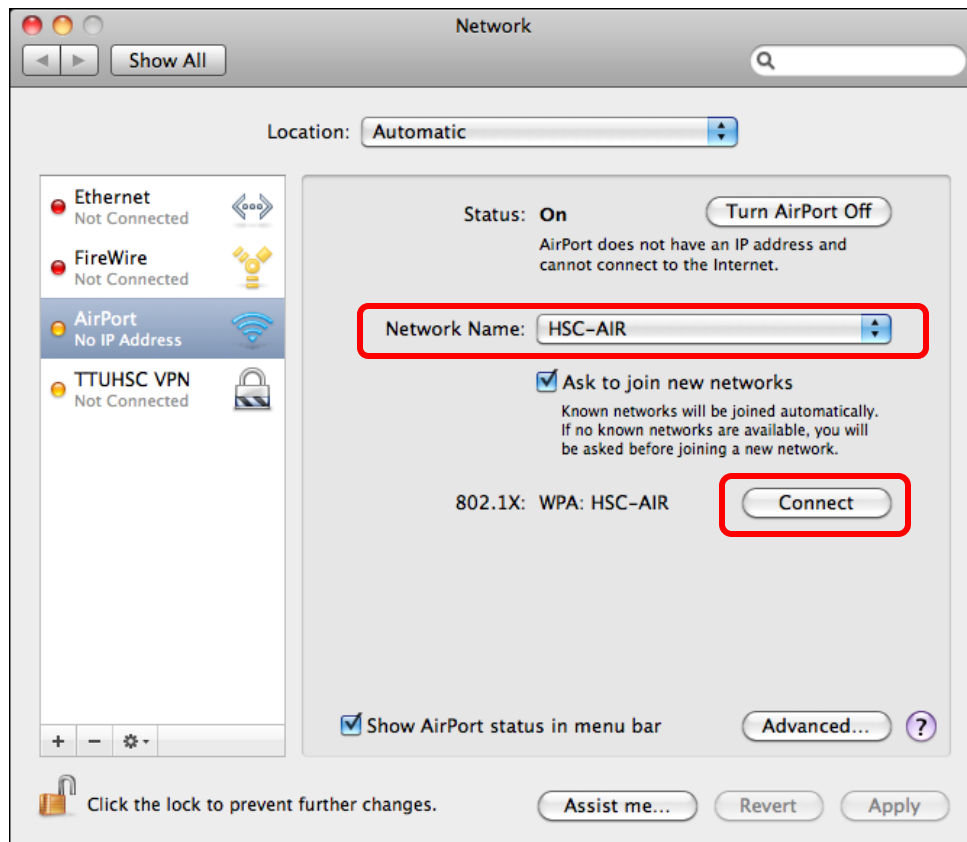
6. Select the **802.1X** tab and with the user profile of **WPA: HSC-AIR**, under **Authentication**, leave **PEAP** selected and uncheck any other options. Then click **OK**.



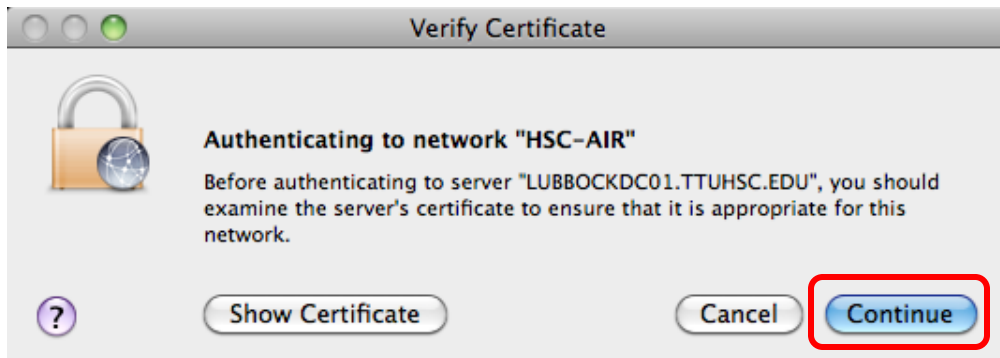
7. Then click **Apply**.



8. Then with the **Network Name: HSC-AIR** selected click **Connect**.



9. When connecting to HSC-AIR, you will be prompted to accept a certificate, click **Continue**. (Note: You will be prompted for your local computer account username and password)



10. Your computer should then be connected to the HSC-AIR wireless network.

