

TechLinkHD

Overview

In order to provide an updated environment for classroom instruction and video conferencing, the TechLinkHD system was created. Much of the functionality of the previous TechLink system has been integrated and updated into this new, more advanced system. Every effort was taken to make the transition from the TechLink system to TechLinkHD an easy one. This document will detail the new TechLinkHD system as well as give a comparison of legacy systems.



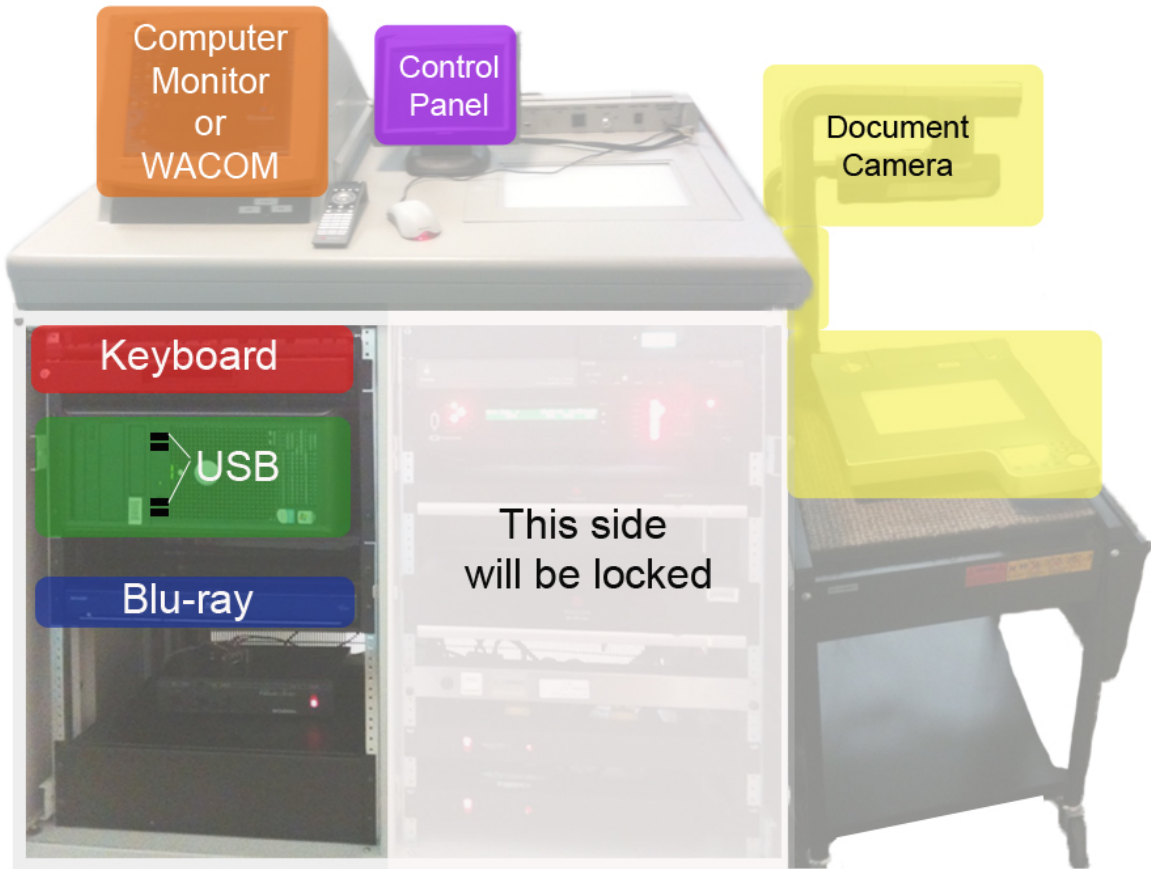
TechLinkHD has a slightly new interface. Users will now be able to control the content source, instructor and remote sound as well as video output.

Archive Sessions

Did you know that TechLinkHD will have the ability to automatically archive your sessions? When setting up the event with the scheduling agent (Classroom Support or HealthNet), indicate that the session needs to be recorded. Instructions on how to retrieve the archive file after the session will be provided.

Podium Configuration

Typically, the teaching podiums will be set up in the following configuration.

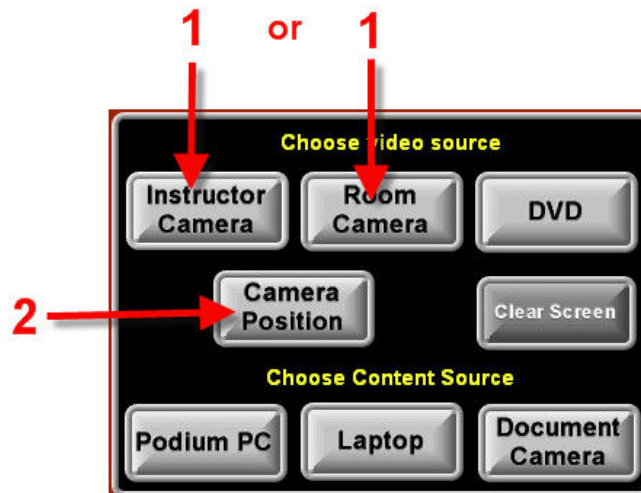


Notice that the keyboard is now directly under the computer monitor. Four USB inputs are available in the front for easy access. TechLinkHD will now support blu-ray media, DVD, HD Document Camera and flash drives.

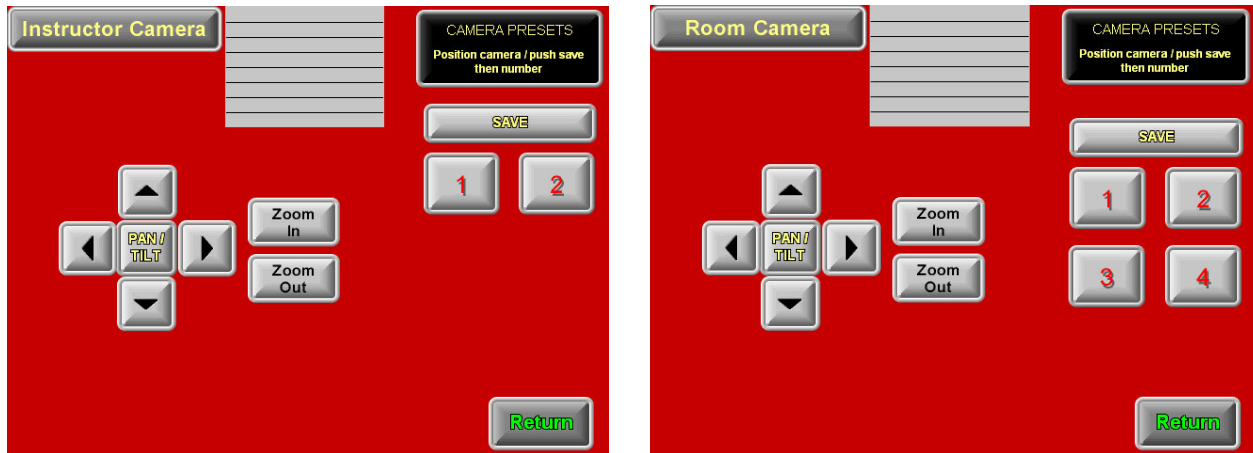
Note: VHS media is no longer supported.

Camera Positioning

Adjust Camera Position



In TechLinkHD, users will now have the option of adjusting the Instructor and Room cameras. By pushing the Instructor Camera button or Room Camera button then the Camera Position button, users will have the ability to define the camera positions for each session.



Note: Presets can be saved on this page for fast switching during the presentation. This can be done by positioning the camera using the movement buttons, touching SAVE and finally touching a preset numbered button. To switch to a camera preset, simply touch the preset number.

Sound

The TechLinkHD system delivers High Definition sound that is captured in the archive recordings. The sound is now captured by microphones positioned in various locations throughout the room. Each TechLinkHD classroom is equipped with room microphones and an instructor microphone.



Document Camera

With the new TechLinkHD system, enhancements such as a new and improved document camera will be added to several upgraded stations. Functionality such as digital zooming, auto focus and the ability to display images from an SD memory card are part of the enhancements that will upgrade user experience.

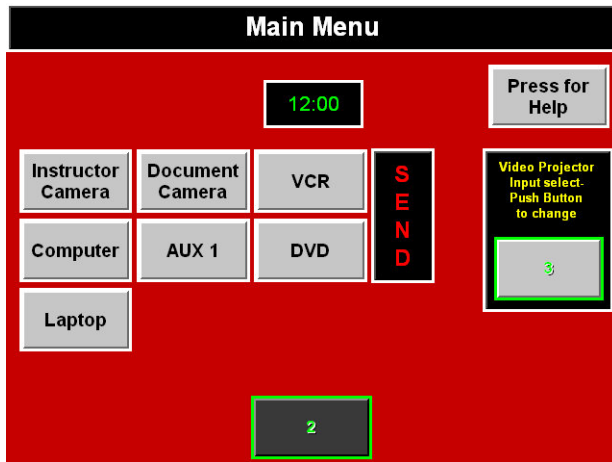
Blu-ray

In the new configuration, teaching podiums will include a blu-ray disc player. Users now have the ability to play blu-ray discs, DVDs and CDs. Although HD-DVD and VHS are not supported, blu-ray provides for HD quality from blu-ray discs and will up-scan or enhance any regular DVD.

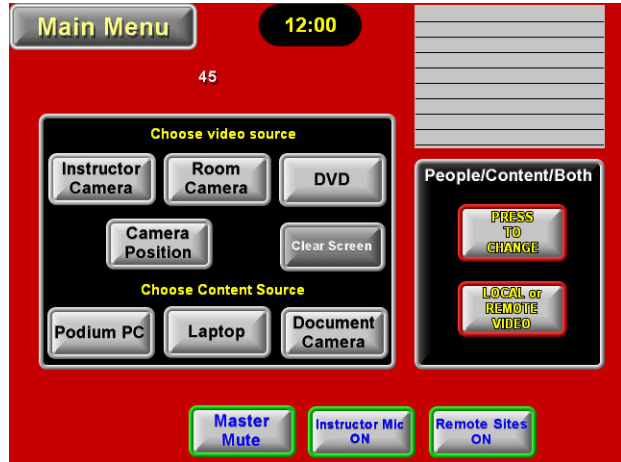
TechLink vs. TechLinkHD

TechLinkHD is very similar to TechLink yet has some important differences.

TechLink



TechLinkHD

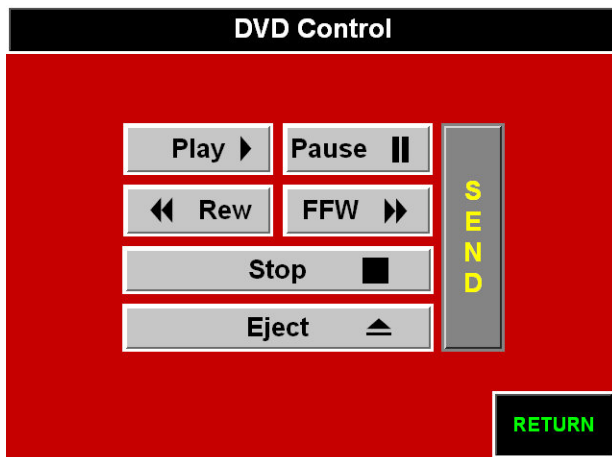


Notice that there is no longer a SEND button. On TechLinkHD, users will simply toggle the content source by choosing the appropriate button.

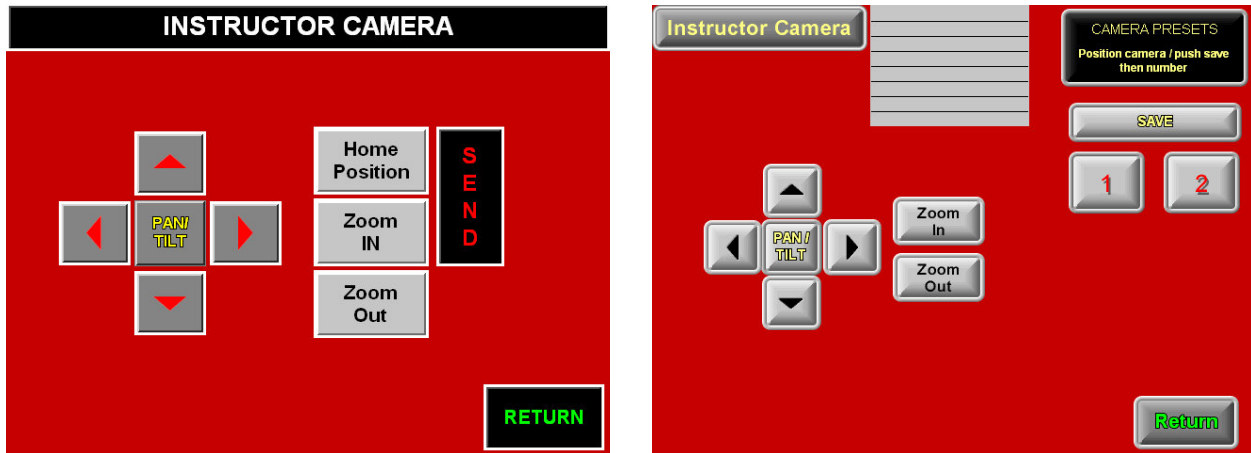
There will no longer be a Press for Help button. Users will simply express verbally that they need help within the class room. Operation Technicians will respond as they will be monitoring the room.

Notice sound buttons have been added. Master Mute will mute all sound coming from the instructor microphone, sound coming from room microphones and remote site sound. Instructor Mic ON will toggle the sound for the instructor microphone. Remote Sites ON will toggle the sound coming from all remote sites. What has been muted will be reflected in the file archive if the session is being recorded.

What is displayed on the wall will be displayed on the Main Menu panel for instructor/facilitator convenience.



On the DVD control panel, features have been added for easier playback and menu control from the podium. The SEND button has been eliminated. Users simply choose the button appropriate for the task. DVD playback will now be displayed on this panel for instructor/facilitator convenience.



On the Instructor Camera panel, functionality has been added so that users can add two camera presets for fast switching. Output of the instructor camera will be displayed on this panel for convenience. Once the camera has been adjusted appropriately, simply touch the save button and touch the preset number.



Room cameras are now configured and moved from the teaching podium. Like the Instructor Camera, presets can be saved and utilized for fast switching. The room camera is displayed on this panel for instructor/facilitator convenience.