

YOUR LIFE

— *our purpose* —

TEXAS TECH UNIVERSITY HEALTH SCIENCES CENTER



**F. Marie Hall
Institute for
Rural and
Community
Health**

**2018 Annual
Report**



Contents

Mission & Vision	1
Letter from the Director	2
Serving West Texas	4
Administration	5
InHT	6
T-CORE	16
R2DM	22
Funding in 2017-18	24
Scholarly Activity	26

F. Marie Hall Institute for Rural and Community Health

MISSION & VISION

The F. Marie Hall Institute for Rural and Community Health exists to work in close collaboration with the people of West Texas for the advancement of health through innovative and scholarly research, the advanced use of technology, comprehensive education and community outreach.



We thank you for allowing us to spend our time with purpose and to strive each and every day to make the world a better place.



F. MARIE HALL

MOTTO: We focus our imagination, our talents and our energy to improve the health and well-being of the people and communities of West Texas and beyond.

Letter from the Director



DR. BILLY U. PHILIPS, JR., PhD, MPH

Watershed is a word most people have heard. It has two common definitions. One definition is “an area or ridge of land that separates waters flowing to different rivers, basins, or seas.” The other is “an event or period marking a turning point

in a course of action or state of affairs.” This past year in the F. Marie Hall Institute was just such a year. It was our watershed.

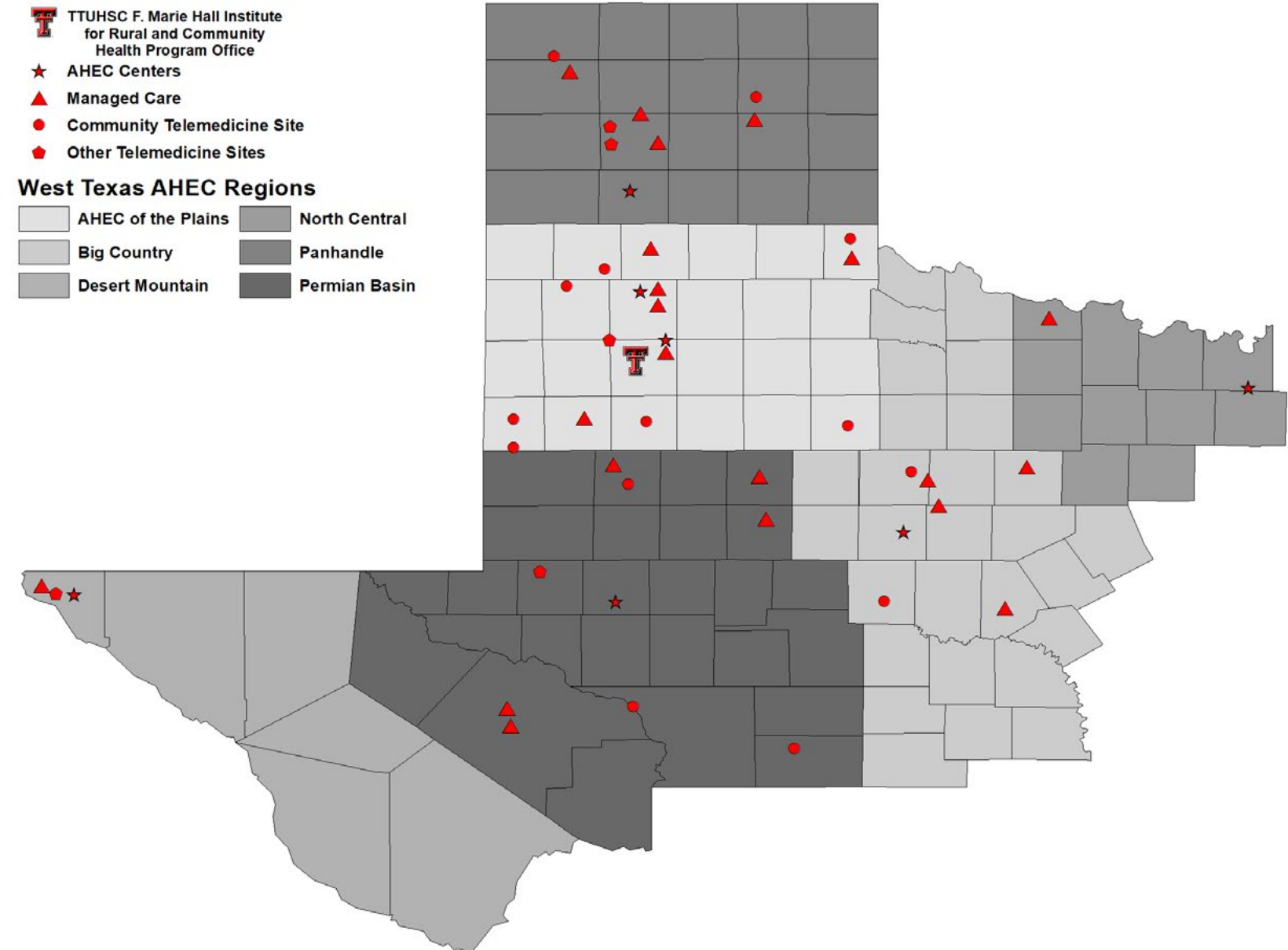
This year the Texas Tech University Health Sciences Center embarked on a journey toward a values based culture. It’s our intention to live out our life at work guided by what we say we believe. We have decided we will fulfill our vision and mission as one team, being kindhearted, acting with integrity, being visionary, and going beyond service. We have together as members of TTUHSC staked the high ground and from henceforth our river will flow to a different place. For the Institute, it is a reminder of how we have tried to work since our beginnings – a recommitment to what has set us apart that is now the culture around us and we are committed, even enthusiastic, about the change.

This year we have been very successful in writing grants and contract proposals. Of the seven applications we submitted, five were funded. Our team has brought in new state and federal funding and programs and we have sustained some of our legacy, bedrock programs. In this report you will probably recognize both the new and the continuing programs. The key thing about the Institute’s funding is that we have three streams of funding – endowment, grants and contracts, and state appropriations. As any civic-minded Texan knows, we are about to enter into the political season with the upcoming biennial legislative session. Unless we prevail in educating our legislators about

the enormous value of the West Texas AHEC and those others in the state, too, then we eliminate a very successful way that youth are recruited to health careers through efforts like Texas Hot Jobs, the AHEC Scholars Program, and shadowing with preceptors that is a proven way to ensure graduates remain to work in rural areas.

The Office of Rural Health is on the block as well; part of a special line item that has been funded for years, the subject of a last minute compromise to sustain all such funding items in the last legislative session, it is not expected to be funded this time around. The Office of Rural Health has been the entity around which many innovative programs in health has been sustained – things like community needs assessments that are required for all critical access and rural hospitals to keep their non-profit status with the IRS. Those studies would cost over \$25,000 if not available from the Office of Rural Health, which provides them as a service to entities that often operate on a razor-thin margin to stay in business. Moreover, it is the Office that provides much of the required matching funding for grants like HB13 that fund the innovative and much-acclaimed Telemedicine Intervention Triage Wellness and Referral (TWITR) Project that provides much needed mental health resources to ISDs in rural areas that lack enough mental health resources for the children that need them.

~ *Dr. Billy U. Philips, Jr.*



Serving West Texas

Why is it so crucial for the state to be concerned with health care across this rural and remote half of the state? The answer lies within the vast resources that West Texas contributes and the people who make it all possible.

West Texas plays a significant role in the daily lives of most Americans as a primary source of food, fuel, and fiber. West Texas is home to major beef and pork produc-

tion, including some of the world's largest cattle feedlots. We have some of the top producing oil and gas fields in the nation as well, and the region also serves as a prominent source of agriculture for the country.

The Texas Tech University Health Sciences Center is centered in the midst of this perfect rural research environment and is uniquely situated to lead efforts that go beyond statistics to create real-world rural health solutions.

OUR FOCUS

1

HEALTH TECHNOLOGY

Telemedicine and telehealth training, health IT support, practice management, clinical quality coaching and network improvement support.

2

HEALTH EDUCATION

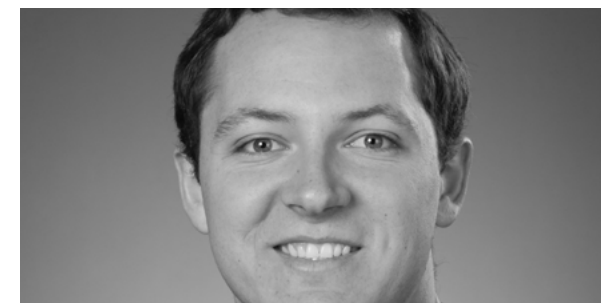
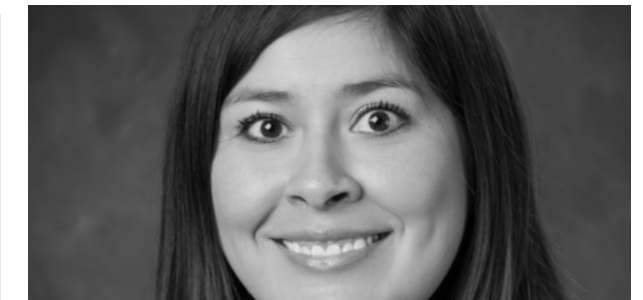
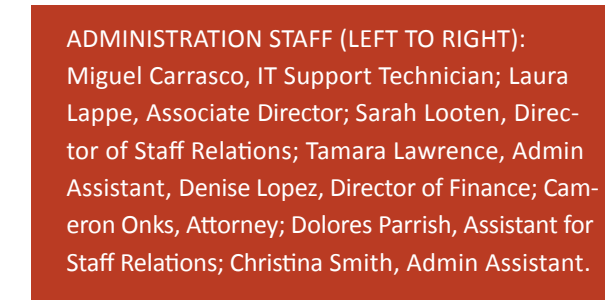
Coordination of pipeline activities to recruit and engage students to enter the health care workforce and practice in rural West Texas.

3

BEHAVIORAL HEALTH

Behavioral health counseling, triage, intervention and referral for West Texas public school students via LPCs and telemedicine.

Administration Staff



ADMINISTRATION STAFF (LEFT TO RIGHT): Miguel Carrasco, IT Support Technician; Laura Lappe, Associate Director; Sarah Looten, Director of Staff Relations; Tamara Lawrence, Admin Assistant, Denise Lopez, Director of Finance; Cameron Onks, Attorney; Dolores Parrish, Assistant for Staff Relations; Christina Smith, Admin Assistant.

Innovations in Healthcare Technology (InHT)



Telemedicine, Telehealth, and Health IT Support

Our Innovative Healthcare Transformation division (InHT) assists health care providers and hospitals in modernizing their organizations with the use of telehealth and telemedicine technology.



TRAVIS HANSON, JD, MS
InHT EXECUTIVE DIRECTOR

InHT STAFF (LEFT TO RIGHT, TOP TO BOTTOM): Jimmy Ashley, Tech Manager; Traci Butler Carroll, Frontiers In Technology Project Manager; Melanie Clevenger, Telemedicine Clinic Manager; Amanda Freeman, TWITR Senior Mental Health Specialist; Becky Jones, TexLa Program Manager; Ron Martin, TWITR Senior Mental Health Specialist; Kelly Munoz, InHT Project Manager; Shawn Marie Parrott, TWITR Senior Mental Health Specialist; Nandini Ramanathan, Telemedicine Support; Sharon Rose, EMS Telemedicine Project Manager; Lisa Wynn, Administrative Assistant.





Telemedicine in West Texas

The Texas Tech University Health Sciences Center (TTUHSC) Telemedicine Program continues to bridge access barriers in the 108-county service area of West Texas.

The TTUHSC Telemedicine Program provides patient services including rural health clinic-based specialty care, school-based clinic primary care, correctional telemedicine, and mental health services, including a school-based triage and referral project and an HIV+ clinic for uninsured and underserved patients.

Telemedicine encounters and miles saved for FY 2017-18 included the following:

- **1,146** Total Patient Encounters

- **438** Correctional Patient Encounters

- **708** Community Patient Encounters

- **216** Infectious Disease Clinic Patient Encounters

The telemedicine program at Texas Tech University Health Sciences Center has been recognized nationally through several distinctions and honors.

Telemedicine program staff provided demonstrations to 536 people in FY 2017-18, exceeding their target of reaching 500 with Telemedicine demonstrations.

Telemedicine also provided practical training opportunities to TTUHSC students and residents to better prepare them for future use of such technologies.

Looking ahead, the TTUHSC Telemedicine program will continue to create awareness of telemedicine programs and the use of technology in medical practice among local physicians, administrators, and health service providers, as well as in surrounding areas. Awareness includes the advancements of telemedicine and other technologies, improvements in reliability, simplicity of equipment/software use and the potential that exists to expand telemedicine to West Texas communities and beyond, seeking help to overcome barriers to care and increase access to health services.

TexLa TRC

The TexLa Telehealth Resource Center is a federally funded program designed to provide technical assistance and resources to new and existing Telehealth programs throughout Texas and Louisiana. Nationally, there are a total of 14 TRCs which include 12 Regional Centers, all with different strengths and regional expertise, and 3 National Centers, one focusing on Technology Assessment, one on Telehealth Policy and one providing technical assistance regarding State policies affecting the use and deployment of telehealth services. The TexLa TRC works to eliminate barriers and supports the expansion of telehealth throughout the region.

TECHNICAL ASSISTANCE



435

CLIENTS
ASSISTED IN
FY 2017-18

The TRC provides technical assistance to advance telehealth across Texas and Louisiana. Technical assistance describes the information, tools and resources provided addressing such telehealth topics as technology, policy and reimbursement.

OUTREACH AND EDUCATION



164K

OUTREACH
CONTACTS IN
FY 2017-18

The TexLa Telehealth Resource Center reached 163,899 individual in FY 2017-18 by outreach and education through speaking engagements, workshops, conference exhibits and booths, websites and social media.

Frontiers in Telemedicine (FIT) Lab

The Frontiers in Telemedicine Course is a unique program that trains clinical staff about telemedicine, including clinical encounters, telemedicine technology, etiquette and ethics, and telemedicine billing.

- A total of 57 providers were trained in the FIT lab in FY 2017-2018.
- New curriculum was created to train students from the School of Health Professionals Clinical Counseling program.
- New curriculum was created to train students in the Community Health Workers Bridge to Excellence course.
- The FIT Lab teaches students in a hybrid format, with online modules, live lectures, and hands-on demonstrations and practice.
- Student competency is tested through the use of Objective Structured Clinical Examinations (OSCEs) using standardized patients.

TRAINING CLINICAL STAFF



From February 1, 2016, the FIT Lab has trained 240 professionals in Emergency Medicine, Dermatology, Psychiatry, Pediatrics, Internal Medicine, and various Public Health specialties, including department chairs from multiple campuses of TTUHSC.

Telemedicine, Wellness, Intervention, Triage and Referral (TWITR)

The TTUHSC Telemedicine, Wellness, Intervention, Triage, and Referral project was created following a grant from the Criminal Justice Division, Office of the Governor for the State of Texas to create a model for identifying students at risk for committing school violence and intervening with those students before acts of violence occur.

The TWITR screening process utilizes Licensed Professional Counselors (LPCs) that visit partner school districts to aid in identifying the need for crisis intervention and other behavioral problems experienced by adolescents.

When the screening of a student by LPCs indicates the need for an appointment with a psychiatrist, that visit and referrals for ongoing care occurs via telemedicine almost immediately which reduces what can often be a months-long wait for an initial visit with a psychiatrist. This process is especially important in rural west Texas as there is a lack of availability of mental health professionals.

Once a student is identified and screened by a TWITR LPC, a telemedicine laptop and speakers are connected to the Lync Microsoft Software to a video conference with a TTUHSC psychiatrist. During this virtual visit, the student becomes a patient of the TTUHSCS psychiatry department and begins treatment through the video conference.



Next Generation 911 Project



PILOT PROJECT

Created and funded by Texas House Bill 479, the Texas Commission on State Emergency Communications and TTUHSC were asked to establish a pilot project which would place telemedicine equipment in Emergency Medical Service (EMS) units.



FY 2017-2018

The project successfully installed telemedicine equipment into an additional rural EMS unit in 2018, bringing the total to five: Scurry County EMS and Cogdell Memorial Hospital, Medical Arts Hospital EMS, Andrews EMS and Permian Regional Medical Center, Seminole EMS and Seminole Hospital District and Bailey County EMS



LOOKING AHEAD

We plan to implement additional ambulances next year. Other goals of the project include improving care communications and proving cost savings by directing patients to more appropriate treatment facilities without screening in hospital emergency departments.



South Plains Veterans Telemedicine Services



The TTUHSC Office of Rural Health has partnered with VetStar and the Veterans Resource Coordination Group (VRCG) to connect veterans and their families to the mental health resources they need. The most current Veterans Administration model data projects a total veteran population of 25,148 for the program's 20 county service area and a population of 6,061 in the South Plains Veterans Telemedicine Services target demographic, including 855 women veterans.

Lubbock County averages approximately 66 veteran arrests every month; this indicates a high need for intervention and transition services on the South Plains. At this time, there are no special Veterans Courts in the VRCG's service area. As a

Veterans often have difficulty accessing mental health care when they need it. We serve those who served.

result, the Institute works closely with the Lubbock County Office of Dispute Resolution to provide mediation services for justice-involved veterans, including criminal mediation.

According to the latest American Community Survey estimates, nearly nine percent of the almost 16,000 Lubbock County veterans live below the poverty level, a higher rate than Austin, San Antonio, Houston, El Paso or Dallas/Ft. Worth.

During the VETSTAR grant project, 34 veterans with other than honorable discharges were assessed for mental health dispositions involving PTSD and Military Sexual Trauma, and 25 of the veterans were treated through counseling and other services. A total of 75 sessions were provided to the veterans in FY 2017-18. Veterans, veteran family members, and surviving spouses were all considered eligible to participate in the program.

FREQUENTLY ASKED QUESTIONS

Why Telemedicine?

Telemedicine provides access to mental health services not available in rural areas. Tele-psychiatry helps to minimize the costs to veterans of traveling to distant cities for care.

How great is the need?

44 percent of veterans need some mental health care. 40 percent of West Texas veterans live in rural area where mental health professionals are in short supply.

What counties do we serve?

All 20 of the counties the program serves are located in rural West Texas and have been designated Mental Health Professional Shortage Areas (MHPSA).

SHIP (Small Hospital Improvement Project)

In partnership with the Texas Department of Agriculture State Office of Rural Health (TDA SORH), the Texas Tech University Health Sciences Center (TTUHSC) F. Marie Hall Institute for Rural and Community Health (FMHIRCH) offered an Ultrasound Education Initiative to Small Hospital Improvement Project (SHIP) hospitals in Texas. This project provided training about the benefits/uses of handheld ultrasound and demonstrations of a handheld ultrasound device.

Training took place in four quadrants of Texas in 2017, and

each live training was preceded by a webinar-offering of the same training, for eight training opportunities in total.

Handheld ultrasounds were then purchased/deployed to interested facilities for approximately one-month trial use. Facilities were asked to complete data sheets during the trial, and data about handheld ultrasound use will be collected and sent to the TDA SORH. Facilities that were interested in purchasing a similar device had the opportunity to purchase at bulk pricing, using SHIP funding, and several took advantage of that opportunity.

BY THE NUMBERS

4

FOUR QUADRANTS

Training took place in four quadrants of Texas in 2017: Potter County in June, Lavaca County in July, Ector County in August, and Limestone County in September.

8

EIGHT DEVICES

Eight handheld ultrasounds were purchased/deployed to interested facilities for approximately one-month trial use and data was collected and sent to TDA SORH.

54

FIFTY-FOUR FACILITIES

We managed routing of handheld ultrasound units to participating SHIP hospitals and provided technical assistance as needed until 04/09/2018.

Transforming Communities through Outreach, Recruitment & Education (T-CORE)

Education and outreach, youth recruitment and counseling, and community health worker training

T-CORE was created to describe the programs that have evolved within the West Texas AHEC division of the F. Marie Hall Institute for Rural and Community Health. In addition to West Texas AHEC, programs under T-CORE include Community Health Worker Development-Bridge to Excellence, Scrubs Club, Double T Health Service Corp and the Youth Empowerment Training Initiative (YETI).



DEBRA FLORES, PhD, MA
EXECUTIVE DIRECTOR OF
T-CORE



T-CORE Staff



T-CORE STAFF (TOP TO BOTTOM, LEFT TO RIGHT): Jeff Carr, YETI Program Coordinator; Adrienne Harrell, Program Manager; Celeste Hoffman, Health Careers Promotion Coordinator; Estela Salazar, Senior Community Health Worker; Frances Quintero, Senior Health Promotions Coordinator.

West Texas AHEC



Area Health Education Centers

The West Texas AHEC program has six regional offices—Canyon, Plainview, Midland, Denton, Abilene and El Paso—along with a satellite office in San Angelo. Goals for the West Texas AHEC program include coordination of pipeline activities to recruit and engage students to enter the health care workforce.

The six West Texas AHEC Centers collaborate to host a regional summer camp in Lubbock, Texas. The 2018 summer camp, called the West Texas Medical Academy, was one of the most successful camps. 32 exceptional students were recruited from rural West Texas schools to attend the four day camp.



West Texas AHEC has designed a comprehensive longitudinal AHEC Scholars Program. The Scholars Program curriculum will consist of 80+ hours of didactic and interdisciplinary training, to be delivered over the two year period (40 hours per year), addressing each of the six (6) core topic areas at various parts of the course.

West Texas AHEC's Scholars Program begins with a formal application process. To ensure AHEC Scholars will reflect a diverse student body with representation from disadvantaged backgrounds and underrepresented minorities. Each of the six AHEC Centers will take part in the Scholar Program and administer the curriculum to a cohort of 15 – 25 new students per year. Students will be drawn from a variety of institutions, backgrounds, and professions. Each cohort will include students from multiple disciplines. Interprofessional practice and education are critical to optimizing patient outcomes and safety and meeting the challenges of the triple aim. The West Texas AHEC Scholars Program activities are structured to emphasize interdisciplinary learning objectives and outcomes throughout the course, including activities that cover descriptions of different job specialties, modules that teach students how to effectively work as an interdisciplinary team, and interviews with currently practicing health professionals from a variety of professions.

Desert Mountain AHEC: Daniel Camacho, Center Director for Desert Mountain AHEC received Mentor of the Year Award from HOSA. The Desert Mountain HOSA team won the following awards during the National HOSA Competition:



West Texas AHEC accomplishments for FY 2017-18 include:

- Provided health career education to 26,216 students
- Exceeded the stated target of placing 454 students in rotations
- Initiated 30 youth health service corps, also known as AHEC Jr. Scholar programs
- Supported 2 Double T collegiate students groups
- Exceeded the set goal by supporting a total of 2,914 health professionals via an annual conference and other hosted continuing education and professional development events for health care professionals.

In 2018-19, West Texas AHEC will continue to focus on establishing strong Youth Health Service Corp programs throughout the region, stipends for students through the AHEC scholars program and community based learning experiences through the CHW Bridge to Excellence and Telemedicine programs.

- 1st Place — Creative Problem Solving
- 2nd Place — Medical Math
- 4th Place — CPR/First Aid
- 4th Place — Health Career Display

Big Country AHEC: Cisco College, Abilene Campus hosted 22 junior high students from Abilene to have a full day to engage with faculty in the surgical technician program and respiratory program. Activities included learning about the tools surgical technicians utilize, what respiratory technicians can do for patients, and a tour of the facilities. The youth program from the International Rescue Committee (IRC) was one of the participants. The youth coordinator said, “I am so glad that my students were able to participate in Cisco’s Health Career Camp. They loved the hands-on activities. This camp gave them a chance to think about possible career choices and interests they may not have known they had before.”

During the month of March, Big Country AHEC integrated nutrition education into one Abilene middle school using education and campaigning resources from the Academy of Nutrition and Dietetics. Using the campaign materials that focus on the importance of making informed food choices and developing sound eating and physical activity habits, BC AHEC recruited 12 volunteers through the high school HOSA program to serve as educators and role models for the middle school students.

Other outreach activities included:

- Provided logistical support for the Texas Nurses Association, District 2, Panhandle Great 25 Nurses event.
- Obtained additional IV equipment for Frank Phillips College’s Licensed Vocational Nursing program to allow each campus, Dalhart, Perryton, and Borger to have IV equipment available to train their students.
- Obtained a centrifuge, CPR boards, and a manikin poster pack for use by Clarendon College’s Licensed Vocational Nurses, Associate Degree Nursing, Certified Nurse Aide, and Phlebotomy programs for student learning.

- Obtained stethoscopes for student learning when doing clinicals at the Heal The City faith based clinic whose patient mix is low income, underserved populations. Stethoscopes will be utilized by the Amarillo College and WTA-MU Nursing programs.
- Continued providing clinical scheduling support for area college nursing programs, hospitals and clinics. Will begin incorporating area high schools with advanced health career programs into the schedule beginning in FY 18-19.
- AHEC was able to provide supplies needed to teach students various nursing skills at Odessa College for the Medical Assistant program
- Provided UTPB nursing staff with simulation equipment that would give nurses “hands on” training.

AHEC of the Plains offered CE credits for the following: Mental Health First Aid, LPC Seminars, Texas DSHS Immunization Provider Training, SHS School Nurse Workshop, Suicide Symposium, Perinatal Experts Forum and migrant health education. Ahec of the Plains also hosts an Annual Nursing Conference, an all day event where local nurses will attain anywhere from 6-8 continuing education credits.

Panhandle AHEC will be implementing a Community Health Worker continuing education program in conjunction with the West Texas AHEC Program office to provide required education programs to maintain an individuals existing Community Health Workers certification.

Permian Basin AHEC, under the direction of Elisa Williford, Center Director, continues to work with the Youth Health Service Corp. establishing shadowing opportunities at Midland Memorial Hospital & Seminole Hospital District. Two more YHSC programs will begin this Fall at Winkler County Hospital District in Kermit, TX; and Martin County Hospital in Stanton, TX. Kermit, Seminole, and Stanton are all rural communities.

North Central AHEC hosts the West Texas Jr. Scholar program, the West Texas Scholar Program and clinical rotations for high school students at Kamp Kenner.

Bridge to Excellence

The Bridge to Excellence program provided certification training for 40 new CHWs in FY 2017-18 and provided continuing education training to 34 additional CHWs.

The Bridge to Excellence Community Health Worker (CHW) program is a hybrid class consisting of traditional face-to-face classroom in Lubbock coupled with virtual connectivity through telemedicine equipment to the traditional class in Abilene, and students attending via the ZOOM platform from the comfort of their homes in rural areas of West Texas.

The Bridge to Excellence CHW program graduated its first class in 2017.



Youth Engagement Training Initiative



The YETI program hosted a total of 27 educational workshops and activities through FY 2017-18. All participating youth in YETI were connected to local community partners. These partnerships focused primarily on the formation and maintenance of a Youth-Adult Council (YAC) made up primarily of youth but also including caring adults and parents.

Research, Reporting & Data Management (R2DM)



Research, data collection, contract and grant assistance, report preparation and other communications

R2DM is the Institute clearinghouse for research administration and performs collection, analysis and management of data and information needed for grant proposal preparation and other special projects. Other academic and community-based activities performed by R2DM include community health needs assessments and information dissemination. During FY 2017-2018, R2DM assisted staff members in the preparation of four new funding proposals and published four issues of Rural Health Quarterly (RHQ) magazine and the Institute's Annual Report for 2017. In addition, the Atlas of Rural Health was updated and revised for 2018.



CATHERINE HUDSON, MPH
DIRECTOR FOR RURAL HEALTH RESEARCH

R2DM Staff



R2DM STAFF (TOP TO BOTTOM, LEFT TO RIGHT): Luciano Vilas Boas, Section Supervisor; Debra Curti, Research Associate; Gordon Gong, Senior Director of Study Design and Biostatistical Analysis; Rhonda Isome, Administrative Assistant; Scott Phillips, Senior Editor.

Grant Applications and Awards

The Institute was successful at submitting seven grant applications (4 new and 3 non-competing renewals) for funding during FY 2017-18.

The Staff Attorney was also successful in assisting departments within the Institute in developing and executing a total of 51 contracts during FY 17-18. These included local agreements for the TWITR Project and State and Federal contracts for AHEC and other programming.

GRANT	START DATE	STATUS	TOTAL
Model State-Supported AHEC (HRSA)	September 1, 2017	Awarded	\$3,090,000
Next Gen 9-1-1 Telemedicine Project	September 1, 2017	Awarded	\$ 500,000
Telehealth Resource Center Grant Program	September 1, 2016	Awarded	\$1,381,250
Texas Veterans+ Family Alliance Grant Program	June 1, 2017	Awarded	\$ 193,234
Texas SHIP Hospital Ultrasound Education	March 1, 2017	Awarded	\$ 95,213
TWITR Project- SF-13-J20-27317-03	October 1, 2017	Awarded	\$ 631,292
Texas Healthy Adolescent Initiative	September 1, 2017	Awarded	\$ 121,500
Behavioral Health Workforce Education	May 8, 2017	Awarded	\$ 485,296
TOTAL			\$6,497,785

Funding for FY 2017-18

ENDOWMENTS

The Marie Hall Chair in Rural Health	\$ 173,398
Smith/Vela/Patterson Senior Fellowship for Rural Health Research	\$ 138,842
F. Marie Hall Institute for Rural and Community Health	\$1,233,008

STATE APPROPRIATED LINE ITEM FUNDING

Rural Health Care	\$ 708,482
West Texas AHEC Program	\$1,824,000

ALLOCATED FUNDING TO SUPPORT TELEMEDICINE SERVICES

Correctional Managed Health Care Contract, Billed Clinic Services, and Community Telemedicine Network	\$ 396,868
---	------------



Scholarly Activity

PUBLICATIONS

Carroll, T. B., Philips, B.U. (2018). Texas Tech University Health Sciences Center Frontiers in Telemedicine Simulation Lab and Certificate Course: Facility and Curriculum Development. In N. Callaos, J. V. Carrasquero, A. Oropeza, B. Sanchez, A. Tremante, F. Welsch (Eds.) The 12th International Multi-Conference on Society, Cybernetics and Informatics Proceedings (pp. 1-6). Winter Garden, Florida: International Institute of Informatics and Systemics.

Carroll, T. B. (2018). Four Keys to Telemedicine Etiquette. *Rural Health Quarterly*, 2(3), 34.

Johnson, C., Gong, G., Curti, D., Philips, B.U. (2018). The benchmark of rural health: the top 10 leading causes of death in rural Texas. *TPHA Journal*; 70 (1):18-23.

Gong, G., Curti, D., Johnson, C., Hudson, C., Philips, B.U. (2018). Leading causes of death in rural and urban areas of the eleven Texas public health regions. *TPHA Journal* 2018; Accepted

Philips, B.U., Freeman, A., Parrot, S., Martin, R., Phillips,

S., Lambert, M.E., Hanson, T., Aligeti, M., and Mitchell, T. (2018) A Public Health Strategy to Prevent School Violence: The Results of Five Years of TWITR. (Submitted)

Gong, G., Phillips, S., Hudson, C., Curti, D., Carrasco, M., and Philips, B.U. (2018) Mortality and its Social Determinants in Rural and Urban Areas among U.S. States in 2015. (Submitted)

The following manuscripts are in preparation:

Gong, G., Phillips, S., Hudson, C., Curti, D., Carrasco, M., and Philips, B.U. Mortality and its Social Determinants in Rural and Urban Areas of U.S. States.

Phillips, S., Hudson, C., Curti, D., Carrasco, M., Gong, G., and Philips, B.U. State Rural Health Rankings of the United States.

PRESENTATIONS

Carroll, T. B., Rhea, J. (2017). Ultrasound Education Initiative for SHIP Hospitals. Texas SHIP Hospital Ultrasound Education Project. Limestone Medical Center, Groesbeck, Texas. September 7, 2017.

Carroll, T. B. (2017). A Project Overview: Frontiers in Telemedicine Certificate Course and Simulation Lab. Texas Department of State Health Services Local Mental Health Authority (LMHA) Quarterly Meeting. LMHA, Big Spring, Texas. October 11, 2017.

Carroll, T. B. (2017). A Project Overview: Frontiers in Telemedicine Certificate Course and Simulation Lab. University Medical Center (UMC) Regional Roundtable Event. UMC McInturff Conference Center, Lubbock, Texas. October 12, 2017.

Philips, B.U. (2017). Telemedicine/Telehealth's Role in Value-Based Purchasing. Building Value in Texas Medicaid. Austin, Texas. December 8, 2017. (Panel Discussion)

Philips, B.U. (2018). The State of Telemedicine in Texas. 6th Annual Texas Primary Care and Health Home Summit. Austin, Texas. April 5-6, 2018. (Panel Discussion)

Philips, B.U. (2018). Rural Health in Texas: The Way Forward. Texas Rural Health Association Annual Conference: Paving a Path Forward for Texas. Abilene, Texas. April 24-25, 2018. (Key Note)

Phillips, S., Gong, G., Curti, D. (2018) U.S. Rural Health Report Card. Presented at the Annual National Rural

Health Association (NRHA) Conference, New Orleans, LA. May 8-11, 2018.

Jones, B., Hanson, T. (2018). Telemedicine Challenges: Policy and Payment Telehealth at the Crossroads Conference, San Antonio, TX May 30-31, 2018.

Rose, S. (2018). Next Gen 911 EMS Presentation & ePoster presentations Telehealth at the Crossroads Conference, San Antonio, TX May 30-31, 2018.

Phillips, S. (2018). U.S Rural Health Report Card Telehealth at the Crossroads Conference, San Antonio, TX May 30-31, 2018.

Philips, B.U. (2018). The State of Telemedicine in Texas. Texas Medical Association, Committee on Primary Care and Medical Homes. San Antonio, Texas. May 17, 2018.

Philips, B.U. (2018). The Telemedicine Wellness Intervention Triage and Referral (TWITR) Project. Texas Governor Greg Abbott's Round Table on School Safety. Austin, Texas. May 23, 2018.

Philips, B.U. (2018). Mental Health Screening in Schools Telemedicine, Wellness, Intervention, Triage and Referral the (TWITR) Project" Telehealth at the Crossroads Conference,

San Antonio, TX May 30-31, 2018.

Carroll, T. B. (2018). Telemedicine Presenting Didactics. 2018 Community Health Worker Day Symposium. TTUH-SC HQ Plaza, Lubbock, Texas. June 22, 2018

Philips, B.U. (2018). The Telemedicine Wellness Intervention Triage and Referral (TWITR) Project. Testimony to State of Texas House of Representative, Joint Committees on Public Education and Public Health. Austin, Texas. June 28, 2018.

Philips, B.U. (2018). Telemedicine in Texas. Testimony to State of Texas House of Representative, Committee on Public Health. Austin, Texas. June 28, 2018.

Carroll, T. B., Philips, B. U. (2018). Texas Tech University Health Sciences Center Frontiers in Telemedicine Simulation Lab and Certificate Course: Facility and Curriculum Development. Twelfth International Multi-Conference on Society, Cybernetics, and Informatics. Orlando, Florida. July 8-11, 2018.

Philips, B.U. (2018). Overview of Telehealth Resource Center- TexLa. 2018 Annual Meeting for Southeast Regional Genetic Network. Asheville, North Carolina, July 19-21, 2018.

Philips, B.U. (2018). School Safety through Technology. National Forum on Criminal Justice. Fort Worth, Texas. July 22-25, 2018.

POSTERS

Gong, G. (2018). Trends of cancer incidence, mortality, metastasis at diagnosis and socioeconomic deprivation in rural and urban East, West and South Texas from 2000 to 2014. Texas Public Health Association 94th Annual Education Conference, Waco, TX.

Flores, D. (March 5, 2018) "Impact of Community Health Workers on Triple AIM"; Texas Public Health Association 94th Annual Education Conference, Waco, TX.

Cole, C., Nair, N. Correlation of D-Dimer with BNP in decompensated heart failure. Presented at TTUHSC Student Research Week, March 22, 2018

Saa, L., Hudson, C., Gong, G. Lubbock Centenarians' beliefs on factors affecting longevity: A pilot study through interview. Presented at TTUHSC Student Research Week, March 22, 2018 and The 94th Annual Texas Public Health Association (TPHA) Conference, Waco, Texas. April 11-13, 2018.

Abraham, H., Flores, D. Impact of Community Health Workers on Triple Aim. Presented at TTUHSC Student Research Week, March 22, 2018

Kelley, J., Curti, D., Hudson, C. Analysis of potential disparities in access to emergency care in West Texas versus East Texas. Student Research Week March 22, 2018

BOARDS AND COMMITTEES

April-August 2018

Developer AHEC Scholar Curriculum to include the following modules; "Healthcare Transformation", "Rural Health Issues", "Motivation Interviewing for Healthcare Professionals" & "Interprofessional Education".

January-July 2018

Co-Developer, Behavioral Health Curriculum; Modules include, "Crisis Intervention"; "Group Counseling", "Personality Disorders", "Cultural Competency", "Conflict Resolution", "Behavior Change", "Motivational Interviewing", "Addictions", "Personal Boundaries and Limitations", "Individual and Family Lifespan Human Development", "Ethical Issues & Behavior Change", "Introduction to Personality Theories", and "Physiological Psychology".

2017

CHWS and Telemedicine

STUDENT ENGAGEMENT

Dijo John (MPH Practicum and Project) "Developing a training module for the ongoing Opioid Crisis for Community Health Workers"

Leslee Castro (MPH Practicum and Project) "Developing an interactive dental health overview for Community Health Workers"

Caleigh Cole (SOM Summer Research Project) "Correlation of D-Dimer with BNP in decompensated heart failure.

Lisa Saa (SOM Summer Research Project) "Lubbock Centenarians' beliefs on factors affecting longevity: A pilot study through interview."

Helayna Abraham (SOM Summer Research Project) "Impact of Community Health Workers on Triple Aim."

John Kelly (SOM Summer Research Project) "Analysis of potential disparities in access to emergency care in West Texas versus East Texas."

Dr. Debra Flores, American Public Health Association (CHW Section & CBPR Section).

OFFICES/BOARDS/COMMITTEES

Dr. Billy Philips

2017-Present Member, Statewide Behavioral Health Coordinating Council

2016-Present Member, Texas Health Improvement Network (THIN) Committee

2016-Present Member, eHealth Advisory Board, Health and Human Services

2015-Present Telemedicine Workgroup, Health Related Institutes' Presidents' Initiatives

2014-Present Telemedicine Stakeholders Committee, Texas Medical Board

Dr. Debra Flores

2017 TTUHSC SOM Admissions Selection Committee

2017 TTUHSC SON Admissions Committee

2017 Lubbock Independent School District, Advanced Technology Center Community Advisory Committee (member)

2017 Community Health Worker Development-Bridges to Excellence Community Advisory Committee (Chair)

2017 State Office of Rural Health State Advisory Committee (Member)

2017 Texas Public Health Association (Chair-Health Education Section)

2018 Texas Association of Community Health Worker/Promotora, chair

2018 Texas Rural Health Association (Member)

2018 National AHEC Organization (Member)

2018 National Rural Health Association (Member)

2018 Medical Group Management Association (Member)

2018 American Public Health Association (CHW section)

2018 Healthcare Financial Management Association (Member)

Becky Jones

National Consortium of Telehealth Resource Centers
HB 1697 Implementation Workgroup

HCV Statewide Advisory Board

Texas Health Infrastructure Network (THIN)

COURSES TAUGHT

Dr. Debra Flores

Fall 2015-2018 "Health Systems: Case Studies from Around the World"-Module for Global and Rural Health Certificate Program

Fall 2016-2018 "Issues in Rural Health", Master of Public Health Program

Travis Hansen

Fall 2017 Public Health Ethics and Law Boards and Committees


Carroll, T. B., Flores, D.


2017 Online Module: CHWs in Telehealth/Telemedicine. Community Health Worker Workforce Development: Bridge to Excellence. Lubbock, TX: Texas Tech University Health Sciences Center.



F. MARIE HALL
INSTITUTE FOR
RURAL AND
COMMUNITY
HEALTH

**TEXAS TECH UNIVERSITY
HEALTH SCIENCES CENTER**

 3601 4th Street MS 7110
Lubbock, Texas 79430

 (806) 743-1338

 ruralhealth@ttuhsc.edu