

ABRI Mission

The mission of the ABRI program is to foster interest in the Graduate Program in Pharmaceutical Sciences at the Texas Tech University Health Sciences Center School of Pharmacy among promising and gifted students considering graduate studies leading to research careers in biomedical sciences.



Some Areas of Research

- ◆ Cancer Biology
- ◆ Cell Signaling
- ◆ Drug Formulation
- ◆ Microbiology
- ◆ Pharmacokinetics
- ◆ Hypertension
- ◆ Cardiovascular Biology
- ◆ Drug Delivery
- ◆ Immunology
- ◆ Neurobiology
- ◆ Pharmacology

To see additional areas studied at the School of Pharmacy, please visit the website at:

<http://www.ttuhs.c.edu/sop/pharmsci/Faculty.aspx>

[http://www.ttuhs.c.edu/sop/directory/faculty.aspx?](http://www.ttuhs.c.edu/sop/directory/faculty.aspx?Loccode=&DeptCode=19&ClassCode=2)

[Loccode=&DeptCode=19&ClassCode=2](http://www.ttuhs.c.edu/sop/directory/faculty.aspx?Loccode=&DeptCode=19&ClassCode=2)

Please Note: Not all faculty listed are participants in the ABRI program.

Application Deadline

Hard-copy originals of completed applications and accompanying materials should be mailed to the address provided on the application. All materials are due to the School by:

March 15th

Students interested in applying to the program can find the application on the web page for Graduate Program in Pharmaceutical Sciences:

<http://www.ttuhs.c.edu/sop/research/abri.aspx>

Or visit the School of Pharmacy at
1300 S Coulter, Suite 217.

Contact Information

Teresa Carlisle

Coordinator, GPPS

School of Pharmacy

Texas Tech University HSC

1300 S Coulter

Amarillo, TX 79106

Phone: 806-356-4015 x 287

Fax: 806-356-4021

E-mail: Teresa.Carlisle@ttuhs.c.edu

<http://www.ttuhs.c.edu/sop/pharmsci/graduate.aspx>



**TEXAS TECH UNIVERSITY
HEALTH SCIENCES CENTER™**

ABRI

Amarillo Biomedical Research Internships

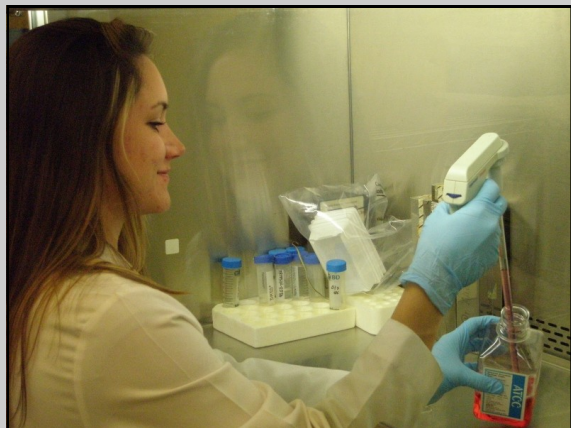


**TEXAS TECH UNIVERSITY
HEALTH SCIENCES CENTER™**

**Graduate Program in
Pharmaceutical Sciences**

Program Specifics

- ◆ 10 week summer internship beginning the end of May and running through the beginning of August.
- ◆ Student interns will be placed under the direction of a graduate faculty mentor in a research laboratory setting for one-on-one, hands-on experience in investigator initiated research.
- ◆ Inters will conduct serious research and develop applied research skills, which will better equip them to successfully pursue graduate studies in biomedical fields.
- ◆ Each selected intern will be awarded a stipend of \$3,300 (made in two payments). The stipend is not based on hourly work but the completion of the entire 10-week internship.
- ◆ While housed in the School of Pharmacy, the focus of the internship is not on preparing pharmacists. Rather, this program centers on biomedical research and prepares students for future work in areas like novel drug development, identification of better medical treatments, or development of more effective methods of medication delivery.
- ◆ Placements are primarily in Amarillo; however, openings may be available in Lubbock and/or Dallas campuses—this varies from year to year.



TEXAS TECH UNIVERSITY HEALTH SCIENCES CENTER™

Intern Requirements

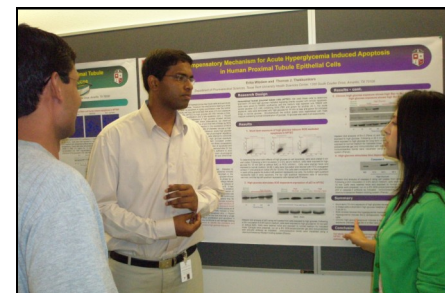
- ◆ Complete 10-week program of laboratory research.
- ◆ Complete all safety training, as required by the TTUHSC Safety Office.
- ◆ Develop and conduct an investigator initiated research project, in consultation with the faculty mentor.
- ◆ Participate in other research activities at the School (i.e., attend research seminars, group meetings, etc.).
- ◆ Complete a research project within the time-frame of the internship.
- ◆ Present work/findings at the end of internship.

Eligibility Criteria

- ◆ Completion and submission of an ABRI application by deadline.
- ◆ Completion of first year toward a bachelors degree OR completion of first year toward a professional degree (*Preference will be given to third or fourth-year students*).
- ◆ Interest in obtaining hands-on, intensive research experience in a laboratory setting.
- ◆ Interest in a research career.
- ◆ *Preference will be given to those who have completed at least some coursework in chemistry and/or biology.*

Selected Research Projects from Previous Years

- ◆ Developing new bioanalytical methodology for biomarkers based on high-performance liquid chromatography
- ◆ Determining transport and efficacy of a drug to the brain
- ◆ Examination of the role of membrane transporters involved in the uptake of extracellular agents into the brain
- ◆ Identifying immunologic effects that kill tumor cells
- ◆ Study of the regulation of intracellular proteins involved in cancer growth
- ◆ Examining factors involved in hypertension and obesity



Quotes from Former Interns

“You take away this amazing experience that you can put on your resume. Graduate schools will be much more inclined to look at you seriously, and you feel more prepared and confident. It gives you a competitive edge.”

“I feel like the work we did was important. There wasn’t a lot of published work on the proteins we were working on, so this project opened the door for everybody to now do research in that area.”

“The experience itself was awesome! It was invaluable, particularly for people wondering if they want to do something in science as a career.”