



JULY 2025

IT ROUNDUP

Leslie Medina
AVP IT Client Services

AGENDA

- IT Project Updates
- Q&A Session

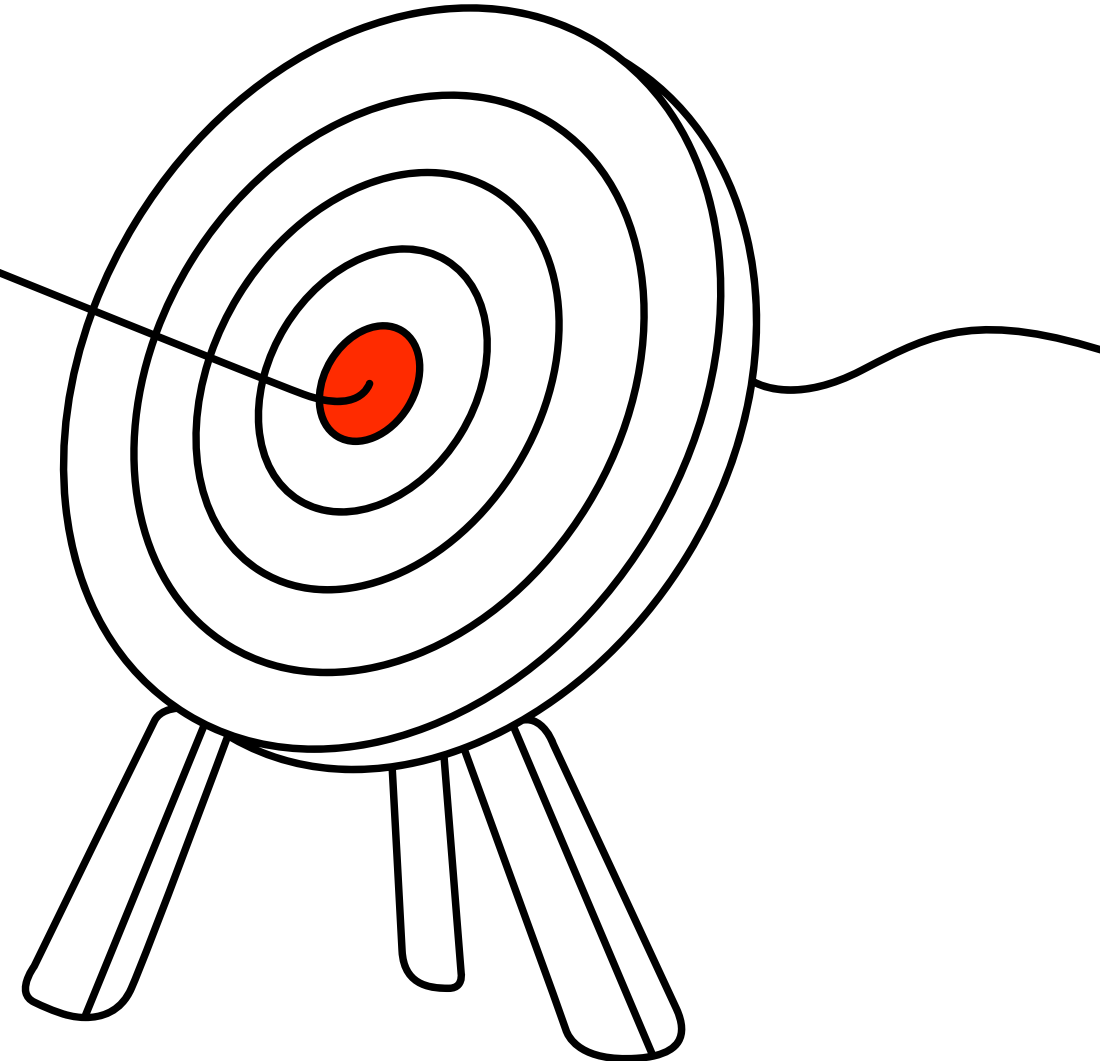


Road to Microsoft 365

Migration to **Exchange Online**

STATUS

- Migration in progress
- Migrating 2,400 accounts every day
 - **Target completion date Friday, July 11**
(Not Including Managed Care)
- Total account holders: 23,642
- Total migrated to date: 16,562



Road to Microsoft 365

Migration to **Exchange Online**

- Supported email apps:
 - Outlook App, iPhone native email app
- No smart phone access?
 - Visit: <https://www.ttuhschool.edu/it/yubikey.aspx>



TEXAS TECH UNIVERSITY
HEALTH SCIENCES CENTER

Search TTUHSC.edu

GIVE MENU

YubiKey & Microsoft Authentication

Home > Information Technology

Information Technology

yubico



YubiKey NFC - Two-Factor Authentication Security Key

When a user's phone cannot support an authenticator app, a security key is the solution for multi-factor authentication (MFA).

- YubiKeys are compact USB devices that plug into a desktop or laptop computer USB port
- Once set up, you'll enter a PIN, then push the button on the key to authenticate
- YubiKeys meet Microsoft's Modern Authentication hardware requirements

How can I get a YubiKey?

Keys can be purchased from the vendors listed below. Purchase for the type of USB port (A or C) on your computer.

NOTE: The two models listed below are the only ones that will be supported at TTUHSC.

- [Amazon](#)
- [Best Buy](#)
- [Staples](#)
- [IT@HSC Store](#)



YubiKey Security Key

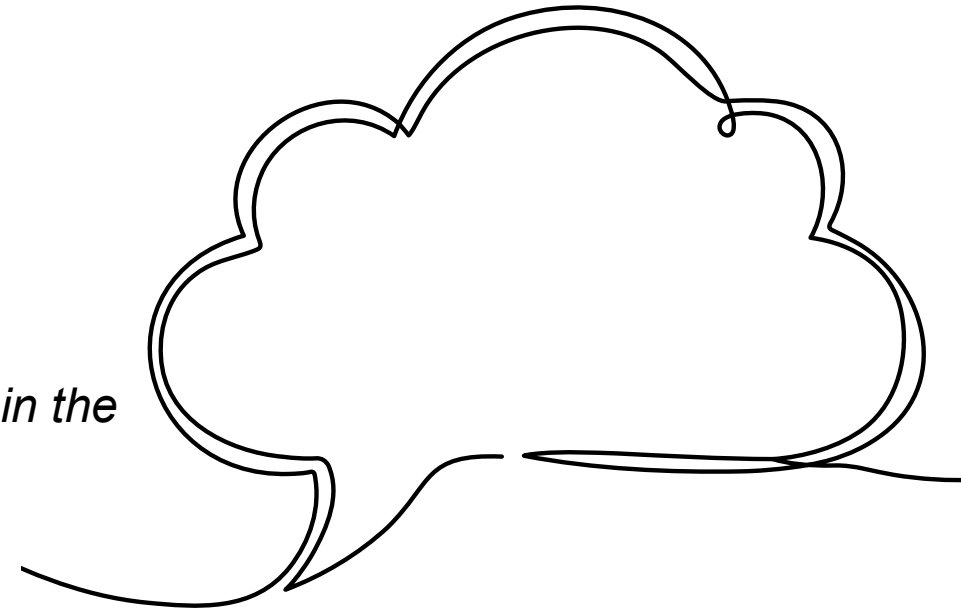
YubiKey Security Key

Road to Microsoft 365

Migration to **Exchange Online**

3rd Party Scheduling Applications


- Integrating 3rd Party Tools with Exchange Online
 - Multiple apps were used across the institution with on-premise Exchange
 - *Apps were installed on individual computers, not in the data center or Exchange servers*
 - **Current functionality is not compatible with Exchange Online**
 - Integration with Exchange Online for these tools would provide access to the whole TTUHSC tenant
 - **This presents a high level of security risk**
 - IT Division will begin investigating the options for standardized, institutional level products



Road to Microsoft 365




Updates regularly posted to:
ttuhsc.edu/it/microsoft-365

TEXAS TECH UNIVERSITY
HEALTH SCIENCES CENTER

Search TTUHSC.edu

GIVE

MENU



Road to Microsoft 365

Home > Information Technology

Information Technology


Microsoft 365 Project Update

Updated June 30, 2025 @ 3:30 PM

Prepare today!

MIGRATION BEGINS JUNE 30

EXCHANGE ONLINE



Microsoft Authenticator is required. **LEARN HOW TO INSTALL APP** Downloading and setting up the free Microsoft Authenticator app is crucial for seamless and secure access to your email. **Failure to use the Authenticator app will prevent you from signing in to Exchange Online and eventually Microsoft 365.**

Prepare for Exchange Online

#1 Setup Microsoft Authenticator

#2 Key Information

UNABLE TO DOWNLOAD/USE THE MICROSOFT AUTHENTICATOR APP?
To access Microsoft products you will need to purchase a YubiKey for authentication. [LEARN MORE](#)



July 2025

Windows 10 End of Life

* Windows 11 Upgrades Have Started

- October 14, 2025 Microsoft stops support
- All TTUHSC PCs must be upgraded to Windows 11
- **October 15, 2025, any non-compliant device will be blocked from the network**



- ✓ Daily through July
(New devices added each Tuesday/Thursday)
- ✓ All campuses
- ✓ Includes desktops AND laptops

Windows 11

Prepare for Upgrade

- **Back up your documents to BOX**
- Ensure device is on, connected to power and internet
 - Including PCs / Laptops in off-campus locations
- **ATTENTION Roaming Users:** Any device not upgraded during our over night updates by Monday, August 11th will have a forced upgrade the **next** time it connects.

Still working with your vendor on an upgrade plan for Windows 11 for specialty equipment. Please email Chris.Nugent@ttuhsc.edu to develop your upgrade plan

Visit the IT Solution Center to **upgrade from ManageEngine:**
[TTUHSC Knowledge Base - How to: Install software from ManageEngine on Windows](#)

Visit the IT Windows 10 page for the upgrade schedule:
<https://www.ttuhsc.edu/it/windows-10.aspx>

! PRO TIP

Avoid potential interruptions and utilize ManageEngine Self Service portal to upgrade on your own schedule.



July 2025



Network Segmentation

- Creating separate networks for TTUHSC equipment and personal devices
- Only domain machines will have access to internal resources, all other devices are redirected to BYOD Network with internet access only.
 - **WiFi network segmentation was done in June 2024**
- **Wired Network Segmentation will begin this month.**
 - Amarillo campus will be done the week of July 21st
 - Other campuses to follow



Wireless Network Upgrade

Upgrading wireless access points to latest standard, WiFi 6e
Currently 75% complete

- Abilene – Complete
- Amarillo – Complete
- Dallas – Complete except 4th floor, awaiting completion of building remodels
- Midland – *In Progress*
- Odessa – Complete
- Lubbock – *In Progress*



Security Tip

University Email & Social Media: Don't Mix



Security Risks:

Having personal emails sent to your work inbox can make it more confusing to spot phishing scams or attempts to hack your personal accounts such as social media.

Privacy Concerns:

Communications via TTUHSC email are the property of TTUHSC and are subject to any institutional monitoring or review. There is no expectation of privacy on TTUHSC email or systems.

Legal Implications

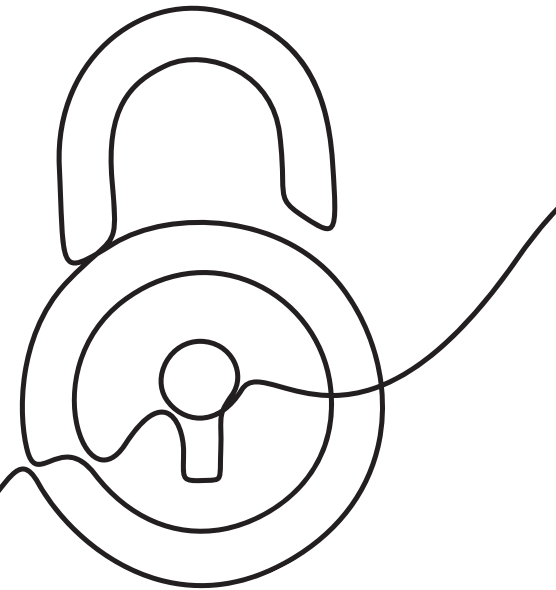
TTUHSC email addresses and eRaider accounts are subject to open records requests. All communications associated with your business email may be subject to review or disclosure.

Loss of Access

If you leave your job with TTUHSC, you risk losing access to your personal accounts that used your TTUHSC email address. TTUHSC email accounts are not available to personnel after separation.



July 2025



Security Tip

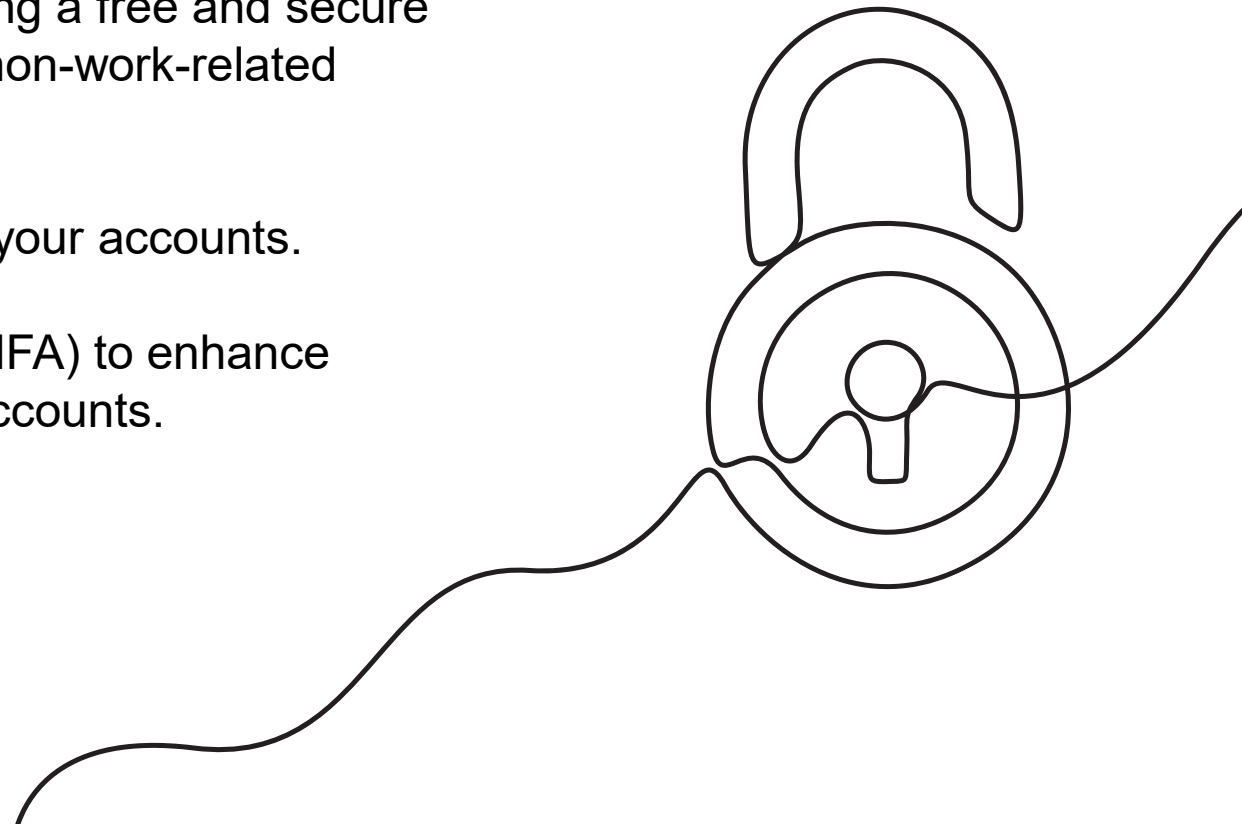
Protect Your Personal Business



- Create a personal email account using a free and secure service like Gmail or Outlook for all non-work-related accounts.
- Use different passwords for each of your accounts.
- Enable multi-factor authentication (MFA) to enhance security and protect your personal accounts.



July 2025





QUESTIONS?