

When searching library applications, use



chrome

Mozilla Firefox, Safari, or Internet Explorer often do not work with library applications or open journal articles!

Plus, Chrome is TTUHSC IT's supported browser!



- Home
- Ask A Librarian
- All Guides
- Reserve A Room
- About
- School / Program
- Library Courses
- Forms
- Printing
- Contact

Newsorthy

Alternate foot paths during the [Lubbock Renovations](#)

Databases A-Z

eJournals (GoldRush)

Books and eBooks

Document Delivery & ILL

Quick PMID Search

Q PMID Search. 1-8 digits only.

• [Access Products Index](#)

- [ClinicalKey / FirstConsult](#)
- [Cochrane](#)
- [DynaMed Plus](#)
- [Embase](#)
- [Essential Evidence Plus](#)
- [Micromedex](#)
- [Nursing Reference Center](#)
- [Ovid](#)
- [SCOPUS](#)
- [PubMed](#)
- [Web of Science](#)

Professional Resources & Services

Create a library account

Off campus users start here

Reference & Instruction

Citation Tools

Images

Video

Web

Mobile

Print

Work

Faculty Publications

Library Hours

• [Amarillo](#) | [Lubbock](#) | [Odessa](#)

TeamViewer

[TeamViewer](#) - [Windows](#) | [Mac](#)

We're Social!

[Facebook](#) [Twitter](#) [YouTube](#) [LinkedIn](#)

Click Access Products Index

The new 50,000 s.f. facility opened in June 1998. It featured a 64 computer workstation lab, 30 internet-wired group study rooms, and

[Embed](#)

[View on Twitter](#)

**MyAccess**

Sites Provided By:
Texas Tech University Preston Smith Library of the Health Sciences

[AccessEmergency Medicine](#)[AccessMedicine](#)[AccessMedicine App](#)[AccessNeurology](#)[AccessPediatrics](#)[AccessPhysiotherapy](#)[AccessSurgery](#)[F.A. Davis PT Collection](#)[JAMAevidence](#)[OMMBID](#)[Subscription Details](#)**Welcome,****Sign in to activate...**

- Remote access to the sites
- Favorite readings, figures, videos, and more
- Your recently viewed content
- Custom Curriculum access. [Learn More >](#)
- CME logging and quiz-taking
- Self-Assessment tracking

[Sign In](#)[Create a Free MyAccess Profile](#)**Click Access Pediatrics****Explore Our Sites**[ACCESS Anesthesiology](#)[ACCESS Biomedical Science](#)[ACCESS Cardiology](#)[ACCESS Emergency Medicine](#)[ACCESS HemOnc](#)[ACCESS Medicina](#)[ACCESS Medicine](#)[ACCESS Neurology](#)[ACCESS ObGyn](#)[ACCESS Pediatrics](#)[ACCESS Pharmacy](#)[ACCESS Physiotherapy](#)[ACCESS Surgery](#)[ACCESS Medicine](#) | Case Files® Collection[ACCESS Pharmacy](#) | Pharmacotherapy Principles and Practice

Click book you wish to read

McGraw-Hill Medical

User Services

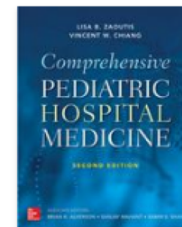
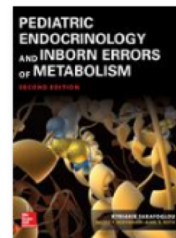
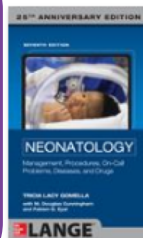
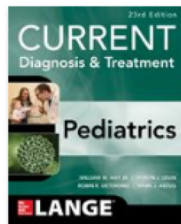
ACCESS Pediatrics

Books Quick Reference Drugs Multimedia Cases Clerkship Patient Ed

AccessPediatrics Search Access

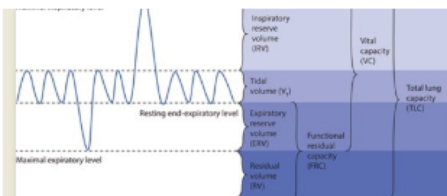


Advanced Search



Browse Books by Topic Get Alerts

AccessPediatrics Channel



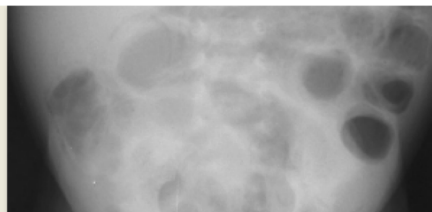
Source: Renu A. Rosenfeld, MD: The PICU Handbook

ACCESSPEDIATRICS CHANNEL
Featured New Content: The PICU
Handbook



Andrew Moyer
Apr 18, 2018

Test Question of the Week

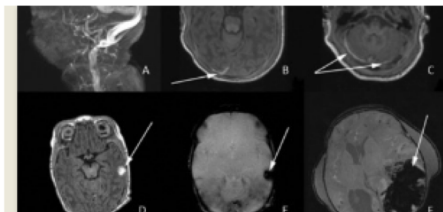


ACCESSPEDIATRICS POP QUIZ
Week 10 Q&A



Andrew Moyer
May 02, 2018

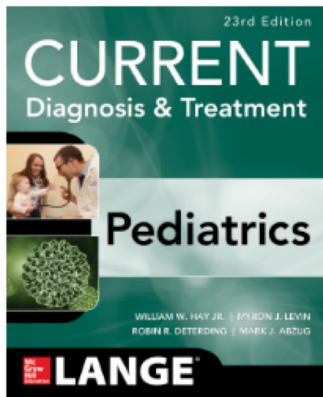
Image of the Week



ACCESSPEDIATRICS' IMAGE OF THE...
Week 10 image



Andrew Moyer
May 02, 2018



CURRENT Diagnosis & Treatment Pediatrics, 23e

William W. Hay, Jr., Myron J. Levin, Robin R. Detering

Search Textbook

[Chapter 1: Advancing the Quality & Safety of Care](#)

[Chapter 2: The Newborn Infant](#)

[Chapter 3: Child Development & Behavior](#)

[Chapter 4: Adolescence](#)

[Chapter 5: Adolescent Substance Abuse](#)

[Chapter 6: Eating Disorders](#)

[Chapter 7: Child & Adolescent Psychiatric Disorders & Psychosocial Aspects of Pediatrics](#)

[Chapter 8: Child Abuse & Neglect](#)

[Chapter 9: Ambulatory & Office Pediatrics](#)

[Chapter 10: Immunization](#)

[Chapter 11: Normal Childhood Nutrition & Its Disorders](#)

[Chapter 12: Emergencies & Injuries](#)

Copyright

Notice

Editors

Authors

Preface

Selected Highlighted Topics in
the 23rd Edition of CDT-P

Search or click topic you
wish to read about