



# **2ND ANNUAL WEST TEXAS HEALTH DISPARITIES RESEARCH SYMPOSIUM**

**MARCH 22-23, 2024**

**OVERTON HOTEL AND  
CONFERENCE CENTER**

**2322 MAC DAVIS LN  
LUBBOCK, TX 79401**



TEXAS TECH UNIVERSITY  
HEALTH SCIENCES CENTER™



JOINTLY ACCREDITED PROVIDER™  
INTERPROFESSIONAL CONTINUING EDUCATION





# SYMPOSIUM SCHEDULE

## Friday, March 22nd (Times Denoted in CDT)

- 11:30 AM – 12:00 PM LUNCH & REGISTRATION**
- 12:00 PM – 12:15 PM WELCOME**  
*Welcome given by Think Tank Faculty Member(s)*
- 12:15 PM – 12:30 PM THINK TANK UPDATE**  
*Reagan Collins and Jad Zeitouni, Co-Founders of the TTU System Health Policy and Public Health Think Tank*
- 12:30 PM – 1:30 PM KEYNOTE – “RURAL HEALTH DISPARITIES: UNRESOLVABLE?” - 1.0 AMA PRA CATEGORY 1 CREDIT™**  
*Nancy Wilson Dickey, MD, President Emerita, Department of Primary Care & Rural Medicine, Texas A&M School of Medicine, Texas A&M Health Science Center*
- 1:30 PM – 2:00 PM EXHIBITOR BOOTHS/BREAK**
- 2:00 PM – 3:30 PM COMBATING HEALTH DISPARITIES IN PRACTICUM**  
*- Stormie Aguirre, BSW, Program Manager Health Equity  
- Jamie Felberg MD Associate Professor Hospital Medicine TTUHSC/UMC  
- Katherine Wells, MPH, Executive Director Lubbock County Department of Health  
- Valeria Sanchez, Executive Director of West Texas Alzheimer Association  
- Kelly Bennett, MD TTUHSC Professor-Family Medicine  
- Chris Williams, Director, AHEC of the Plains*
- 3:30 PM – 4:00 PM EXHIBITOR BOOTHS/BREAK**
- 4:00 PM – 5:00 PM KEYNOTE – “PREVENTING DISEASE IN THE PASO DEL NORTE REGION” - 1.0 AMA PRA CATEGORY 1 CREDIT™**  
*Tracy J. Yellen - Chief Executive Officer, Paso del Norte Health Foundation/Paso del Norte Community Foundation*

## Saturday, March 23rd (Times Denoted in CDT)

- 7:30 AM – 8:00 AM BREAKFAST & REGISTRATION/CHECK-IN/ WELCOME & ANNOUNCEMENTS**
- 8:00 AM – 9:30 AM ORAL ABSTRACT PRESENTATIONS**
- 9:45 AM – 11:15 AM PANEL – “THE ROLE OF ACADEMIC AND COMMUNITY COLLABORATION IN REGIONAL HEALTH ENGAGEMENT” - 1.5 AMA PRA CATEGORY 1 CREDIT™**  
*- Anna Gitter, PhD, Assistant Professor in Environmental and Occupational Health Sciences, The University of Texas Health Science Center at Houston School of Public Health  
- Cynthia A. Jumper, MD, MPH, Vice-President for Government Relations, Texas Dept. Criminal Justice, Texas Tech University Health Sciences Center  
- Jennifer Wilson, MD, Assistant Professor - Pediatrics, Professor-NTT*
- 11:15 AM – 11:45 AM EXHIBITOR BOOTHS/BREAK**
- 11:45 AM – 12:45 PM KEYNOTE LUNCHEON – “RURAL HEALTH DISPARITIES” - 1.0 AMA PRA CATEGORY 1 CREDIT™**  
*Albert Ruiz, Rural Health Specialist & SORH Grant Coordinator, Texas State Office of Rural Health*
- 12:45 PM – 1:15 PM EXHIBITOR BOOTHS/BREAK**
- 1:15 PM – 2:45 PM PANEL – “INNOVATIONS AND STRATEGIES TO ADVANCE HEALTH EQUITY AND ACCESS” - 1.5 AMA PRA CATEGORY 1 CREDIT™**  
*- Deborah Clegg, PhD, Professor-NTT Depart of Research, Professor, Texas Tech University Health Sciences Center El Paso  
- John Gachago, PhD, Executive Director - Telehealth Tech and Innovation Texas Tech University Health Sciences Center  
- Joseph Heppert, PhD, Vice President – Research & Innovation, Texas Tech University  
- Jessica Chacon, PhD, Assistant Professor – Medical Education, Texas Tech University Health Sciences Center El Paso*
- 2:45 PM – 3:45 PM POSTER SESSION**
- 3:45 PM – 4:00 PM CLOSING**  
*Closing Remarks Given By: Chris Williams, Center Director, AHEC of the Plains*



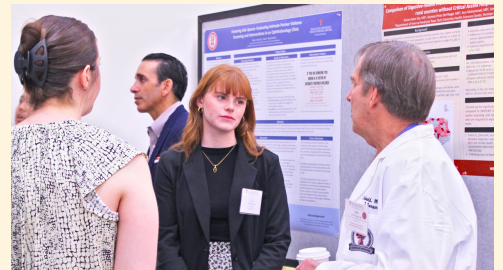
# 2ND ANNUAL WEST TEXAS HEALTH DISPARITIES RESEARCH SYMPOSIUM

## SYMPOSIUM SUMMARY

Texas Tech University System Health Policy and Public Health Think Tank, TTUHSC Office of Accredited Interprofessional Continuing Medical Education, and AHEC of the Plains is proud to announce the 2nd Annual West Texas Health Disparities Research Symposium. The Texas Tech University System spans from Dallas to El Paso, and the health disparity challenges vary greatly across the region. This symposium aims to provide a forum to share various works regarding health disparities and approaches to addressing health equity challenges in the West Texas region. Attendees will learn from distinguished national keynote speakers, panelists, and interactive discussions from various healthcare professionals across the West Texas region and different institutions within the Texas Tech University System.

## SYMPOSIUM OBJECTIVES

1. Identify current health care disparities afflicting West Texas
2. Present primary and secondary data related to healthcare disparities in West Texas
3. Propose current or prospective interventions or strategies that address healthcare disparities in West Texas

JOINTLY ACCREDITED PROVIDER™  
INTERPROFESSIONAL CONTINUING EDUCATION

IPCE CREDIT™

### ACCREDITATION AND DESIGNATION:

In support of improving patient care, this activity has been planned and implemented by Texas Tech University Health Sciences Center, Texas Tech University System Health Policy & Public Health Think Tank, and AHEC of the Plains. The Texas Tech University Health Sciences Center is jointly accredited by the Accreditation Council for Continuing Medical Education (ACCME), the Accreditation Council for Pharmacy Education (ACPE), and the American Nurses Credentialing Center (ANCC), to provide continuing education for the healthcare team.

This activity was planned by and for the healthcare team, and learners will receive 6 Interprofessional Continuing Education (IPCE) credits for learning and change.

### PHYSICIANS:

Texas Tech University Health Sciences Center designates this live activity for a maximum of 6.00 AMA PRA Category 1 Credit(s)™. Physicians should claim only the credit commensurate with the extent of their participation in the activity.

The presentation, "Rural Health Disparities: Unresolvable?" has been designated by Texas Tech University Health Sciences Center for 1 credit hour of education in medical ethics and/or professional responsibility.

### DISCLOSURE & MITIGATION OF RELEVANT FINANCIAL RELATIONSHIPS:

It is the policy of Texas Tech University Health Sciences Center Office of Accredited Interprofessional Continuing Medical Education to abide by the ACCME Standards for Integrity and Independence in Accredited Continuing Education. It is the policy of TTUHSC to collect information from all planners, faculty, and others in control of educational content about all their financial relationships with ineligible companies within the past 24 months and mitigate relationships before the individuals assume their roles.

Ineligible companies are those whose primary business is producing, marketing, selling, re-selling, or distributing healthcare products used by or on patients. Governmental agencies and providers of direct patient care services are not considered to be ineligible companies.

Disclosure of a relationship is not intended to suggest or condone bias in any presentation but is made to provide participants with information that might be of potential importance to their evaluation of a presentation. TTUHSC expects that the content or format of accredited continuing education and related materials will promote improvements in the quality of healthcare and not the specific proprietary business interest of an ineligible company. We employ several strategies to ensure the absence of commercial bias and mitigate relevant financial relationships.

None of the planners and faculty for this educational activity have relevant financial relationships to disclose with ineligible companies except for the following individuals:

1. John Griswold, MD is in the Speaker list for Medline as well as part of the advisory board for Exsurco. These relationships were determined to be of no relevance to the activity topic.

All of the relevant financial relationships listed for this individual have been mitigated

OAICME information is available at the following web site: <http://www.ttuhscc.edu/medicine/continung-medical-education>

NOTE: Texas Tech University Health Sciences Center reserves the right to cancel this meeting or substitute speakers in the event of unforeseen or extenuating circumstances.

# KEYNOTE SPEAKERS

## **NANCY WILSON DICKEY, MD**

*President Emerita, Department of Primary Care & Rural Medicine, Texas A&M School of Medicine, Texas A&M Health Science Center*



## **RURAL HEALTH DISPARITIES: UNRESOLVABLE?**



## **TRACY J. YELLEN**

*Chief Executive Officer, Paso del Norte Health Foundation/Paso del Norte Community Foundation*

## **PREVENTING DISEASE IN THE PASO DEL NORTE REGION**

## **ALBERT RUIZ**

*Rural Health Specialist & SORH Grant Coordinator, Texas State Office of Rural Health*



## **RURAL HEALTH DISPARITIES**

# PANELISTS

## **COMBATING HEALTH DISPARITIES IN PRACTICUM**

### **STORMIE AGUIRRE, BSW**

*Program Manager, Health Equity*

### **JAMIE FELBERG MD**

*Associate Professor - Hospital Medicine TTUHSC/UMC*

### **KATHERINE WELLS, MPH**

*Executive Director, Lubbock County Department of Health*

### **VALERIA SANCHEZ**

*Executive Director, West Texas Alzheimer Association*

### **KELLY BENNETT, MD**

*Professor - Family Medicine, TTUHSC*

### **CHRIS WILLIAMS**

*Director, AHEC of the Plains*

## **"THE ROLE OF ACADEMIC AND COMMUNITY COLLABORATION IN REGIONAL HEALTH ENGAGEMENT"**

### **ANNA GITTER, PHD**

*Assistant Professor - Environmental and Occupational Health Sciences, The University of Texas Health Science Center at Houston School of Public Health*

### **CYNTHIA A. JUMPER, MD, MPH**

*Vice-President - Government Relations, Texas Dept. Criminal Justice, Texas Tech University Health Sciences Center*

### **JENNIFER WILSON, MD**

*Assistant Professor - Pediatrics, Professor-NTT*

## **"INNOVATIONS AND STRATEGIES TO ADVANCE HEALTH EQUITY AND ACCESS"**

### **DEBORAH CLEGG, PHD**

*Professor-NTT Dept of Research, Professor, Texas Tech University Health Sciences Center El Paso*

### **JOHN GACHAGO, PHD**

*Executive Director - Telehealth Tech and Innovation Texas Tech University Health Sciences Center*

### **JOSEPH HEPPERT, PHD**

*Vice President - Research & Innovation, Texas Tech University*

### **JESSICA CHACON, PHD**

*Assistant Professor - Medical Education, Texas Tech University Health Sciences Center El Paso*



# PLANNING COMMITTEE

## **JOHN A. GRISWOLD, MD, FACS**

Medical Director - Timothy J. Harnar Burn Center, Executive Director - Clinical Research Institute (CRI), Medical Director - Nutrition Support Services, Medical Director - Enterostomal Therapy, Co-Director- Advanced Trauma Life Support, Medical Director - Borden County EMS

## **EBTESAM ATTAYA ISLAM, MD, PhD, FCCP**

Associate Dean - Clinical Education, Associate Professor - Vice Chair of Internal Medicine, Associate Program Director - Pulm/CCM Fellowship, Co-clerkship Director Year 3 IM, Internal Medicine Division - Pulmonary/Critical Care, Texas Tech University Health Sciences Center

## **REAGAN COLLINS**

Co-Founder and Co-Director, Texas Tech University System Health Policy and Public Health Think Tank

## **JAD ZEITOUNI**

Co-Founder and Co-Director, Texas Tech University System Health Policy and Public Health Think Tank

## **ANH NGUYEN**

Co-Director - Communication, Texas Tech University System Health Policy and Public Health Think Tank

## **JUNIA LEE**

Co-Director - Communication, Texas Tech University System Health Policy and Public Health Think Tank

## **BRETT THIGPEN**

Director of Strategy, Texas Tech University System Health Policy and Public Health Think Tank

## **ALYSON WILLIS**

Chairperson, Student Board, Texas Tech University System Health Policy and Public Health Think Tank

## **TRESSA READING**

Vice-Chairperson, Student Board, Texas Tech University System Health Policy and Public Health Think Tank

## **ABDULKADER ALMOSA**

Student Board Member, Texas Tech University System Health Policy and Public Health Think Tank

## **ANYA PAZHOOR**

Student Board Member, Texas Tech University System Health Policy and Public Health Think Tank

## **AMADEUS RAMIREZ**

Student Board Member, Texas Tech University System Health Policy and Public Health Think Tank

## **SERGIO SAUCEDO**

Student Board Member, Texas Tech University System Health Policy and Public Health Think Tank

## **ERIN TORO**

Student Board Member, Texas Tech University System Health Policy and Public Health Think Tank

## **CYNTHIA OGAZ, DBA, MBA**

Managing Director, Office Accredited Interprofessional Continuing Medical Education, Texas Tech University Health Sciences Center

## **EDGAR FUENTES**

Assistant Managing Director, Office Accredited Interprofessional Continuing Medical Education, Texas Tech University Health Sciences Center

## **ERICA CAMPUZANO**

Program Coordinator, Office Accredited Interprofessional Continuing Medical Education, Texas Tech University Health Sciences Center

## **DJ STEVENS**

Program Coordinator, Office Accredited Interprofessional Continuing Medical Education, Texas Tech University Health Sciences Center

## **CHRIS WILLIAMS**

Center Director, Area Health Education Center (AHEC) of the Plains

# ABSTRACT REVIEWERS

## **EBTESAM ATTAYA ISLAM, MD, PhD, FCCP**

Associate Dean - Clinical Education, Associate Professor - Vice Chair of Internal Medicine, Associate Program Director - Pulm/CCM Fellowship, Co-clerkship Director Year 3 IM, Internal Medicine Division - Pulmonary/Critical Care, Texas Tech University Health Sciences Center

## **JOHN A. GRISWOLD, MD, FACS**

Medical Director - Timothy J. Harnar Burn Center, Executive Director - Clinical Research Institute (CRI), Medical Director - Nutrition Support Services, Medical Director - Enterostomal Therapy, Co-Director- Advanced Trauma Life Support, Medical Director - Borden County EMS

## **SARAH LONG**

Manager - Area Health Education Center (AHEC), Midwestern State University

## **JESSICA CHACON, PhD**

Assistant Professor - Immunology & Microbiology, Texas Tech University Health Sciences Center - El Paso

## **LESLIE MAYRAND, PhD**

Professor/Dean - Archer College of Health and Human Services, Angelo State University

## **DANIEL SCHELLER, PhD**

Associate Professor, Director - Master of Public Administration Program, Texas Tech University

## **REAGAN COLLINS**

Co-Founder, Texas Tech University System Health Policy and Public Health Think Tank

## **JAD ZEITOUNI**

Co-Founder, Texas Tech University System Health Policy and Public Health Think Tank

## **ALYSON WILLIS**

Chairperson, Student Board, Texas Tech University System Health Policy and Public Health Think Tank

## **TRESSA READING**

Vice-Chair, Student Board, Texas Tech University System Health Policy and Public Health Think Tank

## **ABDULKADER ALMOSA**

Student Board Member, Texas Tech University System Health Policy and Public Health Think Tank

## **ANYA PAZHOOR**

Student Board Member, Texas Tech University System Health Policy and Public Health Think Tank

## **SERGIO SAUCEDO**

Student Board Member, Texas Tech University System Health Policy and Public Health Think Tank

## **ERIN TORO**

Student Board Member, Texas Tech University System Health Policy and Public Health Think Tank



# ABOUT THE THINK TANK

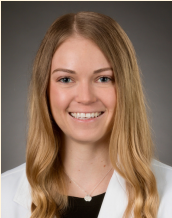
## MISSION AND GOALS:

Texas Tech University System Health Policy and Public Health Think Tank strives to develop, promote, and implement best practices in health equity and access to care throughout the Texas Tech University System and surrounding areas. The Think Tank aims to foster collaborative research and volunteerism, engage with communities to develop policy recommendations, and assist with the implementation of best practices. Our four key focus areas include: rural health disparities, underserved populations in urban areas, inter-professional health education, and community empowerment and education.

## AFFILIATING INSTITUTIONS UNDER THE TEXAS TECH SYSTEM:

- Texas Tech University
- Texas Tech University Health Sciences Center
- Texas Tech University Health Sciences Center El Paso
- Angelo State University
- Midwestern State University

## CO-FOUNDERS:



### REAGAN COLLINS

Reagan Collins is a MD candidate at Texas Tech University Health Sciences Center School of Medicine and a graduate of Texas Tech University with a Bachelor of Arts in Mathematics. Previously, she spent her days as a student athlete on the Texas Tech Women's Tennis Team, but now devotes her time to advocating for health equity through national research pursuits related to social determinants of health and through her role as Co-Founder and Co-Executive Director of the TTU System Public Health and Health Policy Think Tank.



### JAD ZEITOUNI

Jad Zeitouni is a MD candidate at Texas Tech University Health Sciences Center School of Medicine and a graduate of Texas Tech University with a Bachelor of Business Administration in Accounting. He is passionate about using health policy and advocacy to better serve underserved and underrepresented populations. He's pursued these passions during his undergraduate career and continues to do so as Co-Founder and Co-Executive Director of the TTU System Public Health and Health Policy Think Tank.



FOR MORE  
INFORMATION ABOUT  
THE THINK TANK, VISIT:

<https://www.ttuhschool.edu/medicine/academic-affairs/think-tank/think-tank.aspx>

CONTACT US AT [THINKTANK@TTUHSC.EDU](mailto:THINKTANK@TTUHSC.EDU)



# HOW TO RECEIVE CREDIT

To receive *AMA PRA Category 1 Credit™* for physicians and Attendance hours for non-physician attendees must:

1. Attend the symposium on Friday, March 22, 2024, and Saturday, March 23, 2024. – **Be sure to Text-in your attendance or that you electronically signed in. Text “Attend 37936” to 844-984-4767** on your phone to text your attendance.
2. Two forms of providing evaluation and requesting credit after attending the symposium:
  - a. **Text “Claim 37936” to 844-984-4767** on your phone to receive evaluation link and request credit. **OR**
  - b. Log into “My Portal” on the TTUHSC CME website – This is a direct link to the “My Portal”  
<https://cmetracker.net/TTUHSC/Publisher?page=pubOpen&nc=1008789299#/myPortal>
    - i. You have been registered for this conference in the TTUHSC CME database system and you already have a record in our system.
    - ii. As you log in to **My Portal** there will be directions regarding signing in to your account. The email address where you received the registration confirmation email for this conference is the one associated with your records. Be sure to use that email address.
    - iii. If you have never accessed your records, you will need to set a password. If you have set one previously, but don't remember what it is, select “Forgot Password”. If you are unsure about how to proceed, please contact the CME Office (806-743-2929) before creating a new record/account.
    - iv. Once logged in, please take a few minutes to update your profile information in the system. You will find that in the “My Profile” section. Please note that you will not be able to save your profile until you have completed all of the required fields.
3. After updating your profile, please click on the blue **Evaluation/Certificates** tile. This will take you to the conference evaluation. Enter **Activity Code: 37936**. If you do not see the tiles, click on **My Portal** in the left navigation bar and the tiles will come up.
4. After completing the evaluation, you will be able to claim your CME credit(s) on the Certificate Preparation page and print a certificate. Be sure to click on the box beside the session you attended **and** enter the amount of credit you are claiming for that session based on your participation in it. The total amount of credit entered will be calculated at the bottom of the form.
  - a. **Please note:**
    - i. Speakers/Presenters may not claim credit for their presentations.
    - ii. The Office of CME reserves the right to adjust credit awarded as needed, should ineligible credit be claimed.
  - b. **If you do not choose to claim CME credits and print a certificate**, please complete the evaluation anyway, and on the very last slide of the evaluation make this selection: **“To exit the survey and see upcoming TTUHSC CME activities”**. You will be taken to the CME website and you will **not** receive CME credit or print a certificate.
5. **The evaluation will be available until 11:59 PM on Sunday, April 23, 2024.** After this date, if you have not claimed your credit, please contact the CME Office for an alternate method for claiming credit. **Should you have problems accessing the evaluation, please contact the CME office at [cme@ttuhsc.edu](mailto:cme@ttuhsc.edu).**

## TRANSCRIPTS REQUEST INFORMATION

The Office of Accredited Interprofessional Continuing Medical Education maintains transcripts of credits earned by attendees at conferences and other activities certified by Texas Tech University Health Sciences Center. Transcripts may be requested by:

- Log in to the “My Portal” section of the website to print a copy of your transcript for a specific date range. Click on the maroon “Transcript” tile and enter the date range you would like to access. If you have problems accessing the “My Portal”, please contact the CME Office at 806-743-2929.
- Send your name, address, and period of time for which you are requesting a transcript in writing to:  
TTUHSC - Office of Accredited Interprofessional Continuing Medical Education,  
3601 4th Street STOP 7113, Lubbock, Texas 79430-7113