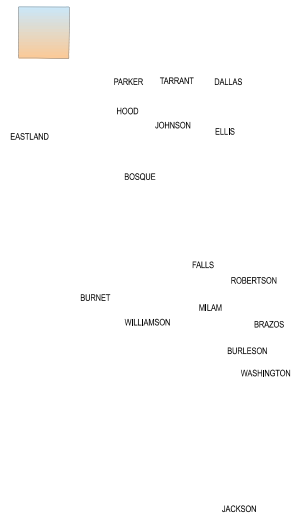


TTUHSC – Health Disparities Left Behind – Rural Health

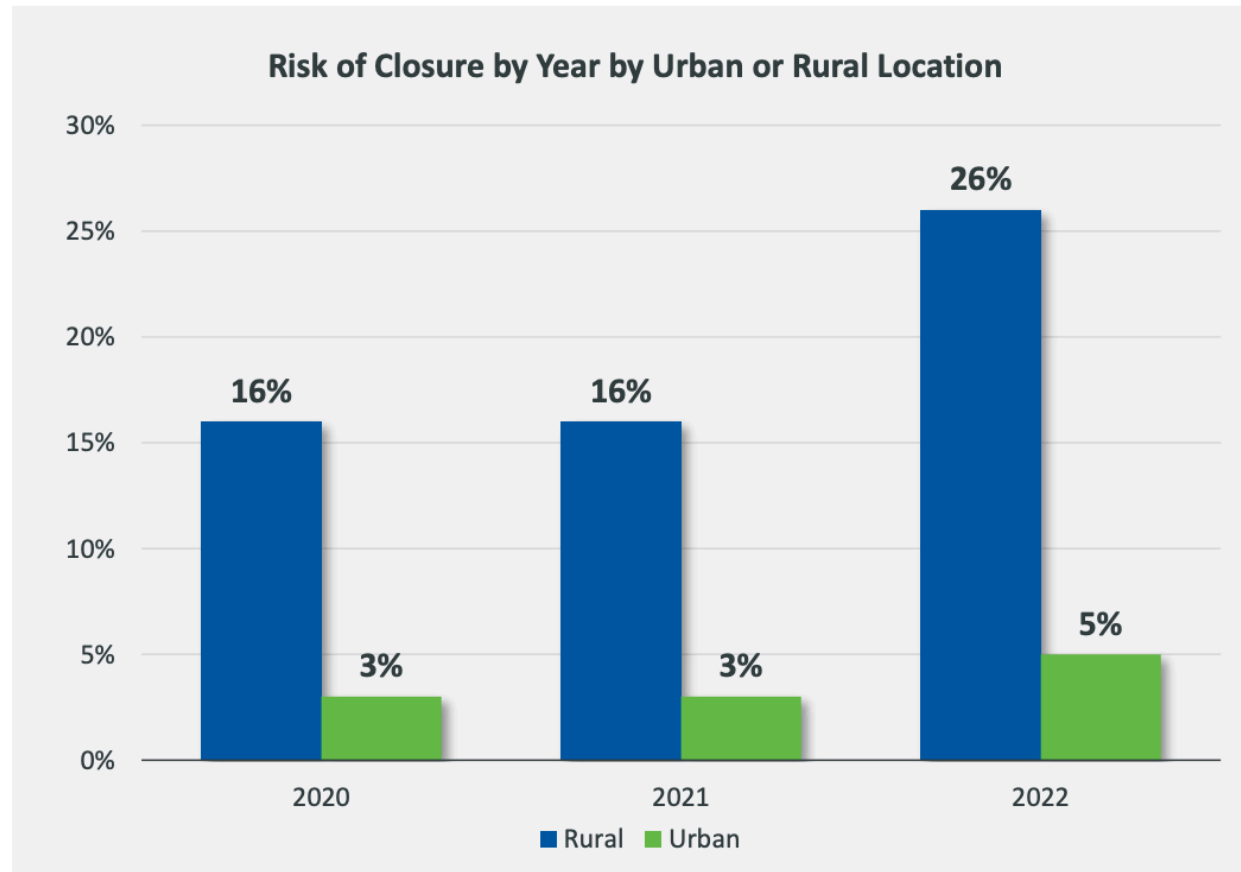
April 27, 2023





- 155 of 158
- 121 Trauma Designated
- 86 CAHs
- 64 OB

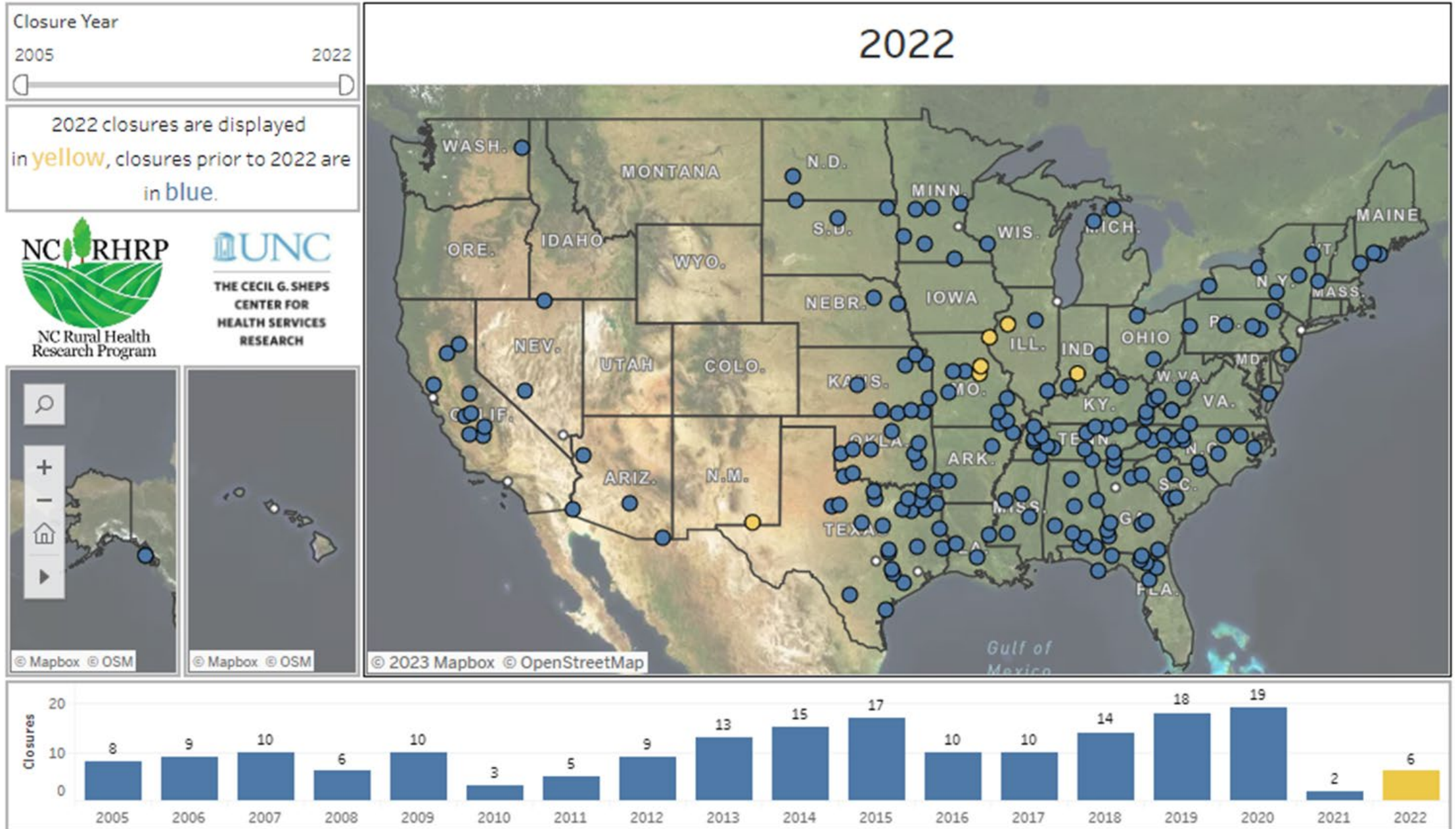
Rural Hospitals Remain at a Higher Risk of Closure than Urban Counterparts, but Risk Has Grown for All



KEY TAKEAWAYS

- The risk of closure for rural hospitals in Texas remains highly elevated over the risk of closure for urban hospitals.
- These challenges represent a clear problem for rural providers within Texas.
- Urban hospitals have also demonstrated an increase in risk over time.

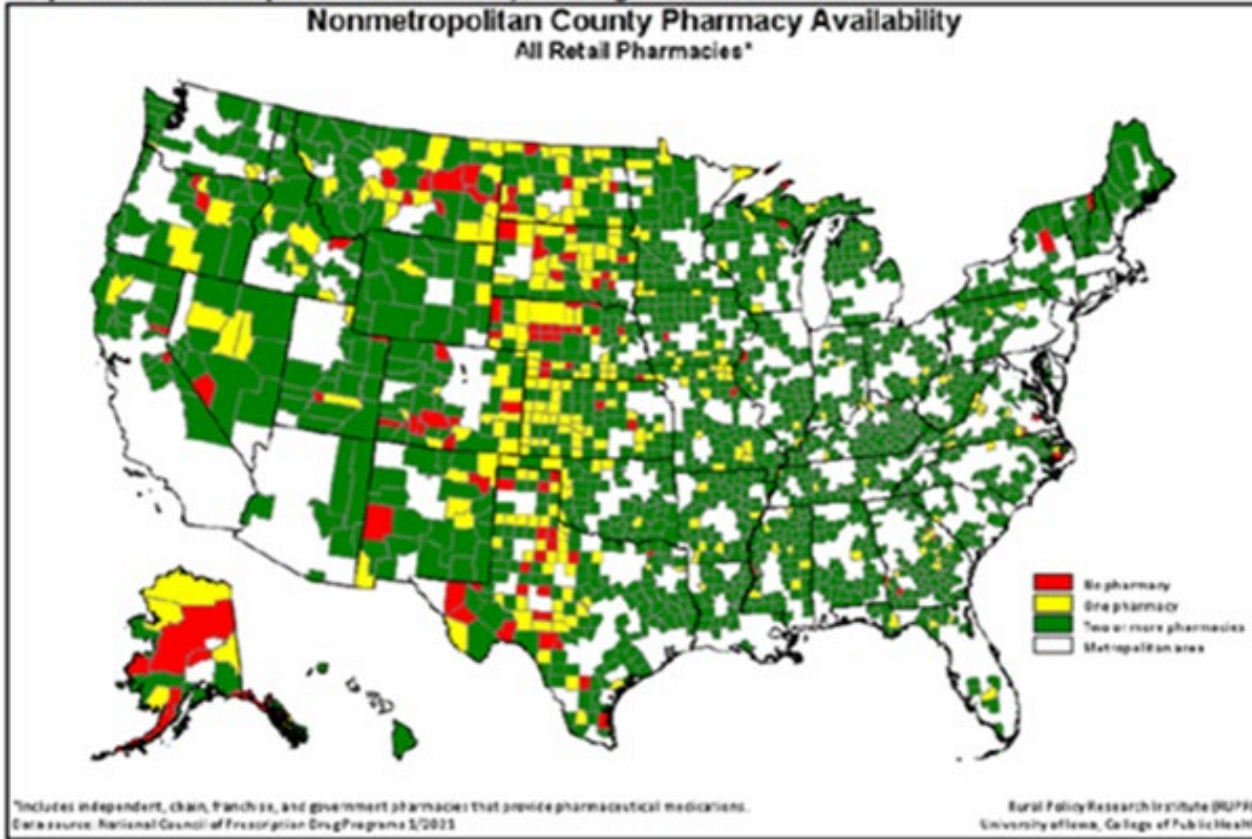
Rural Hospital Closures



Rural Pharmacy Closures

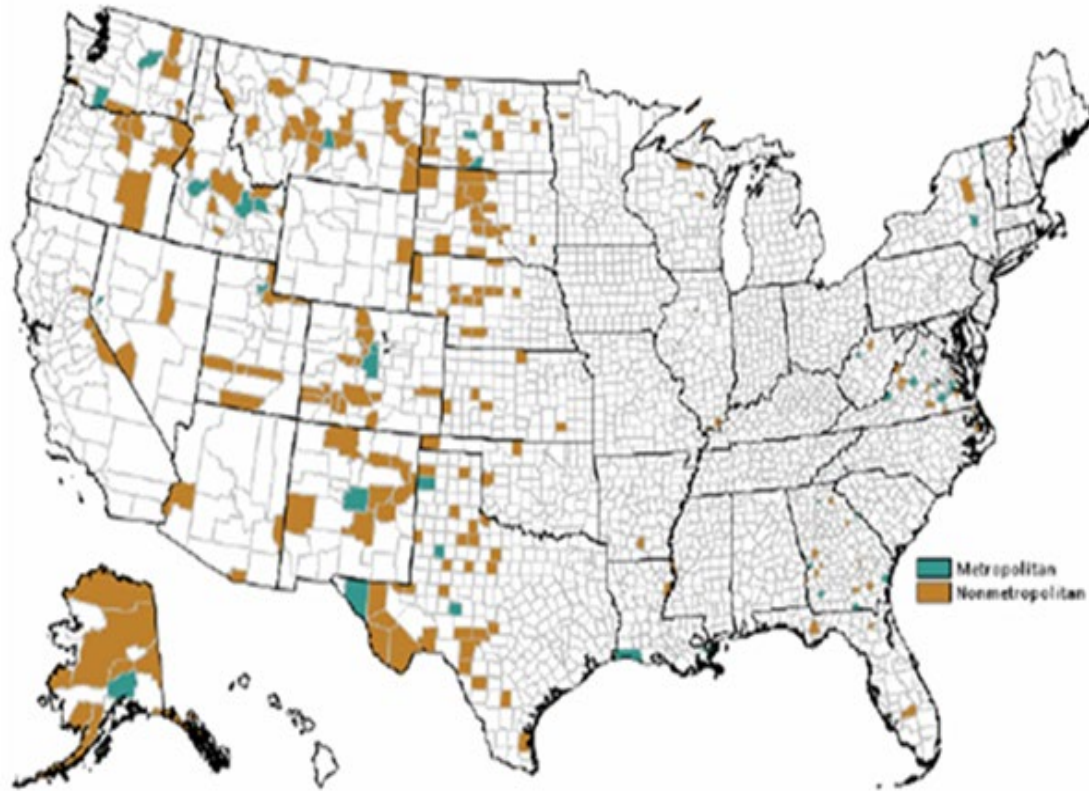
Map 1. Nonmetropolitan Counties, all Eligible Pharmacies

Nonmetropolitan County Pharmacy Availability
All Retail Pharmacies*



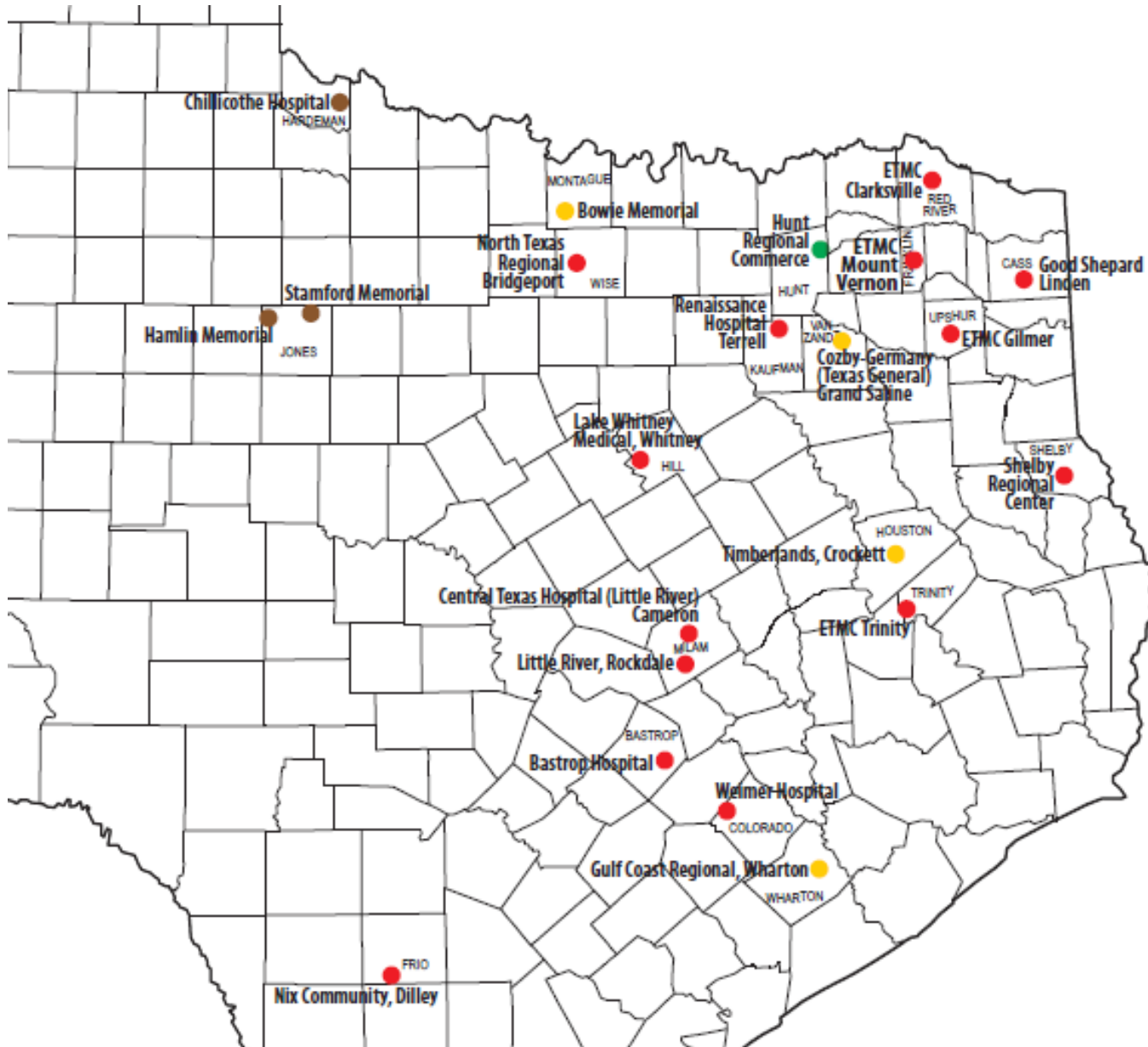
- From 2003 – 2018, 1,231 independently owned rural pharmacies (16.1%) closed
- 630 rural communities with at least 1 retail pharmacy in 2003 had 0 in 2018

Rural Nursing Home Closures



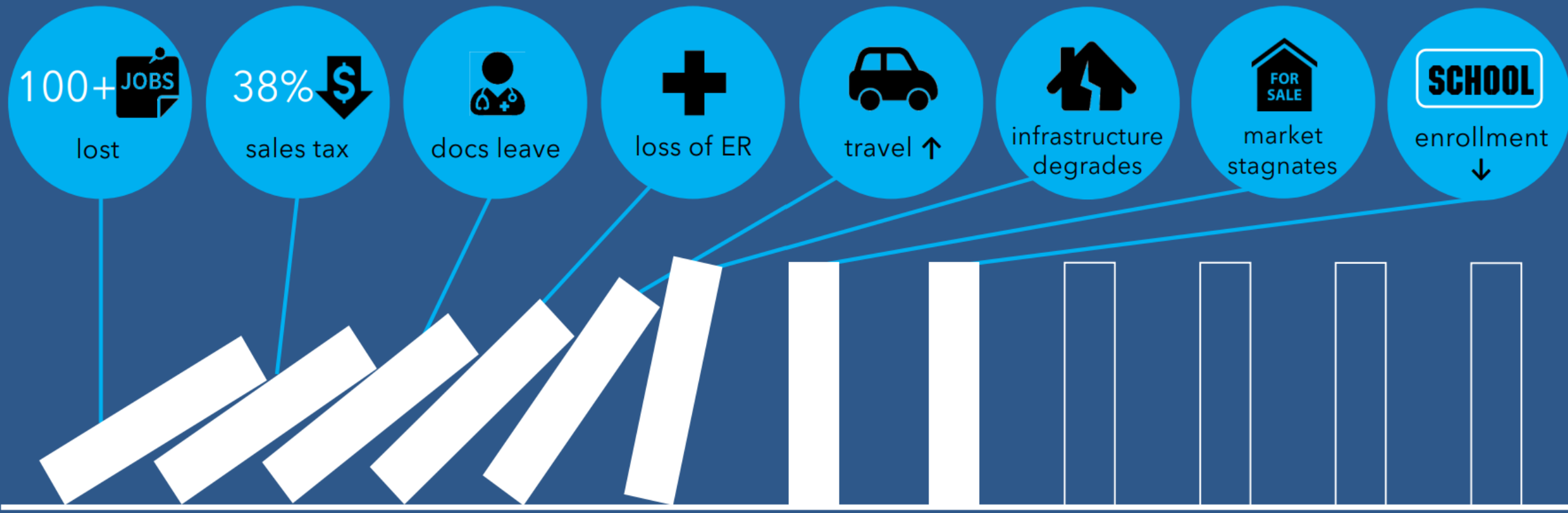
- 10% of rural counties are nursing home deserts
- From 2008-2018, 400 rural counties experienced at least 1 nursing home closure

Texas Closures



- 26 (22 communities) since 2010
- 2x any other state (Tennessee)
- Highest Uninsured Rate (-12 in rural Texas)

Impact of Closure



Population Health Disparity

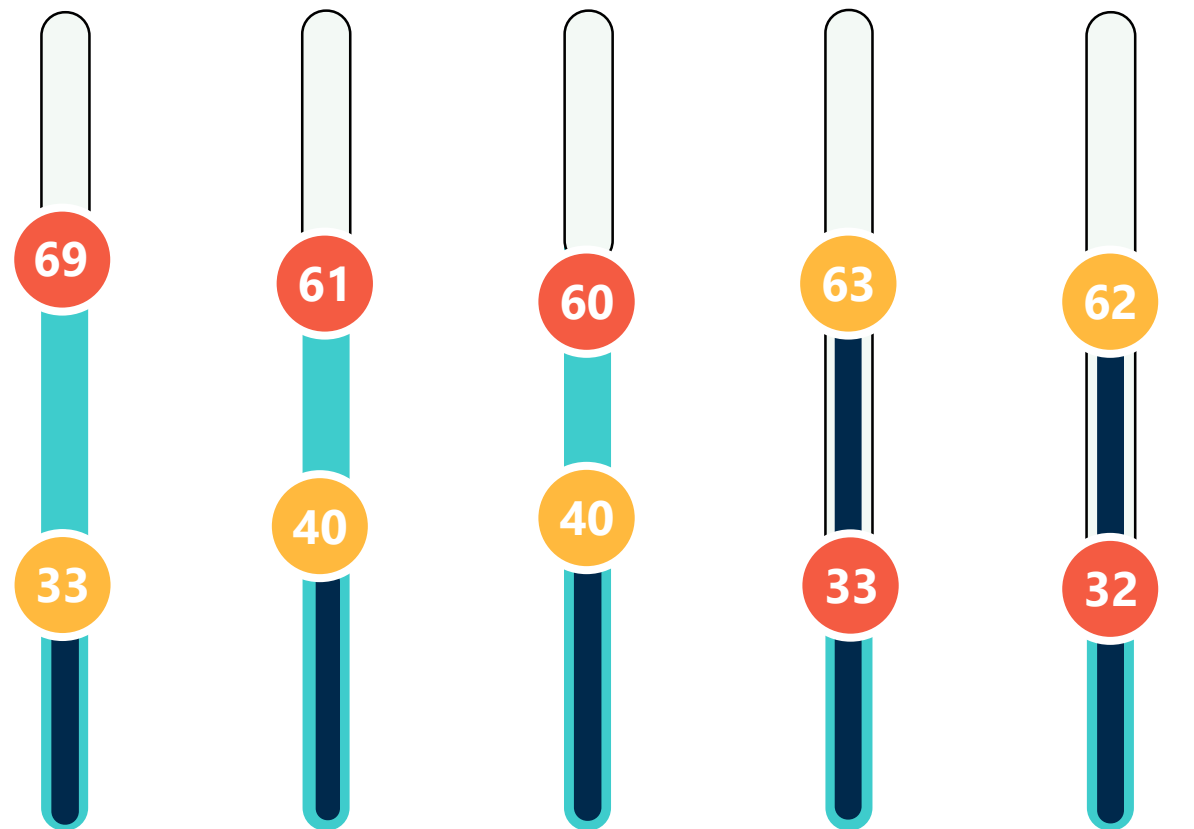
Percentile Ranking



Rural



Urban



Source: The Chartis Center for Rural Health, 2021.

Over 65

Premature
Death

Uninsured
Children

Access to
Primary Care

Access to
Mental Health

Rural has an Older, Sicker and Poorer Population

- The median age of adults living in rural areas is greater than those living in urban:
 - Rural: 51 years
 - Urban: 45 Years
- 18.4% of rural residents are age 65+, whereas its 14.5% in urban
- Rural areas have higher rates of several health risk factors/conditions:
 - Obesity
 - Diabetes
 - Smoking

Fragile Rural Health Safety Net

- Vulnerable populations
- Systemic workforce shortages
- Scattered populations with inherent access to care issues
- Limited resources for providers
- Inadequate Medicare, Medicaid and private insurance coverage
- Lack of Medicaid expansion and high uninsured populations
- Rural provider closures

15% OF ALL AMERICANS LIVE IN RURAL AREAS

Rural Americans are at **greater risk of death** from 5 leading causes than urban Americans

- Heart Disease
- Cancer
- Unintentional Injury
- Chronic Lower Respiratory Disease
- Stroke

PROTECT YOURSELF

Be physically active | Eat right | Don't smoke
Wear your seat belt | See your doctor regularly



more **DISPARITIES**

↑ MORTALITY

↑ CHRONIC PAIN

↑ SUICIDE RATES

↑ MEDIAN AGE

↑ POVERTY

↓ LIFE EXPECTANCY

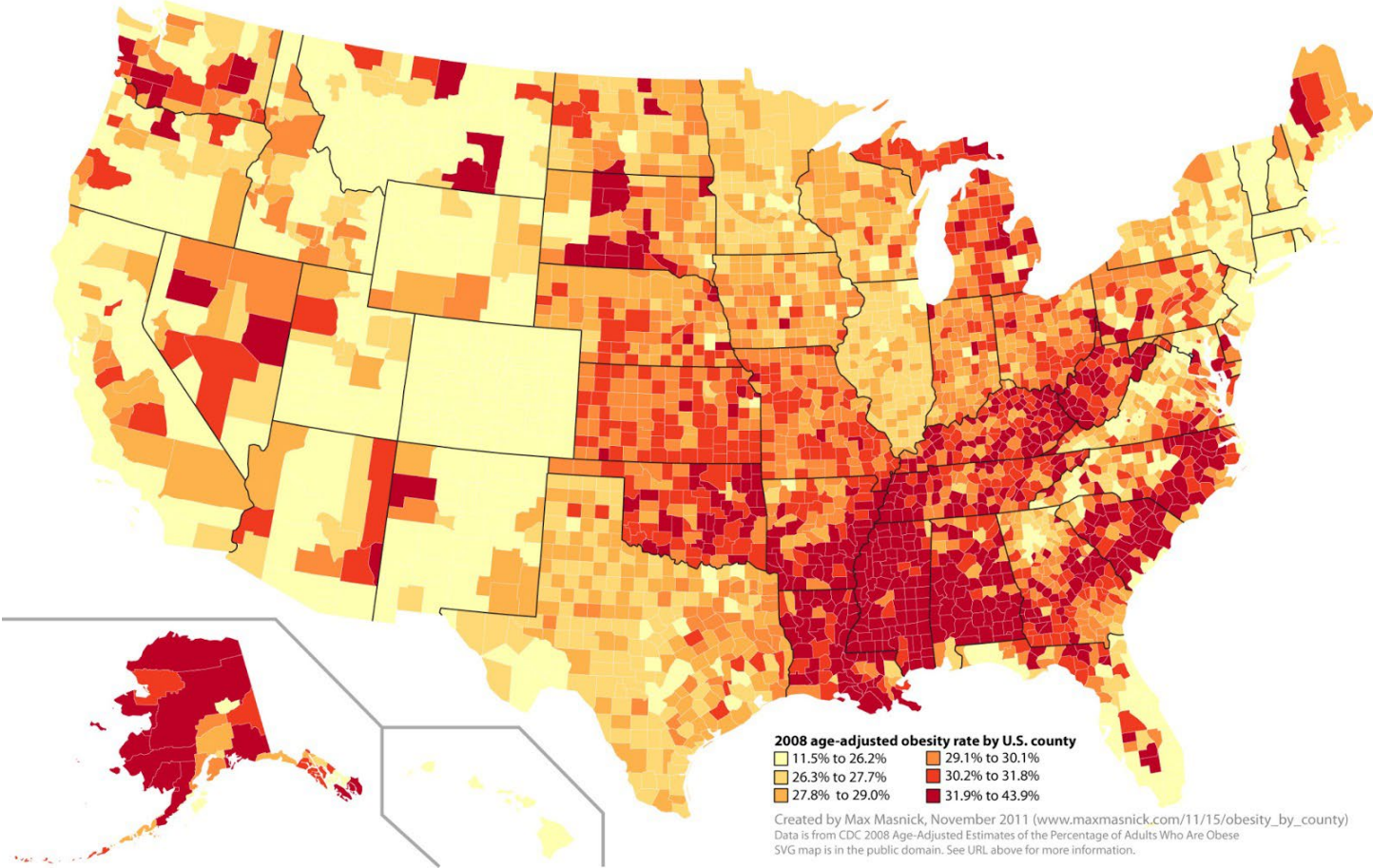
↓ ACCESS TO DOCTOR

↓ JOB OPPORTUNITY

↓ INCOME

↓ COVERAGE

Obesity rates in rural America



Rural Cancer Rates

(Source: Centers for Disease Control and Prevention, MMWR Series July 2017)

- Reported death rates were higher in rural areas (180 deaths per 100,000 persons) compared with urban areas (158 deaths per 100,000 persons).
- Analysis indicated that while overall cancer incidence rates were somewhat lower in rural areas than in urban areas, incidence rates were higher in rural areas for several cancers: those related to tobacco use such as lung cancer and those that can be prevented by cancer screening such as colorectal and cervical cancers.
- *While rural areas have lower incidence of cancer than urban areas, they have higher cancer death rates. The differences in death rates between rural and urban areas are increasing over time.*

Prevalence of Medicare Patients with 6 or more Chronic Conditions

The Prevalence of Medicare Fee-for-Service Beneficiaries 65 Years or Older With 6 or More Chronic Conditions, by County, 2012

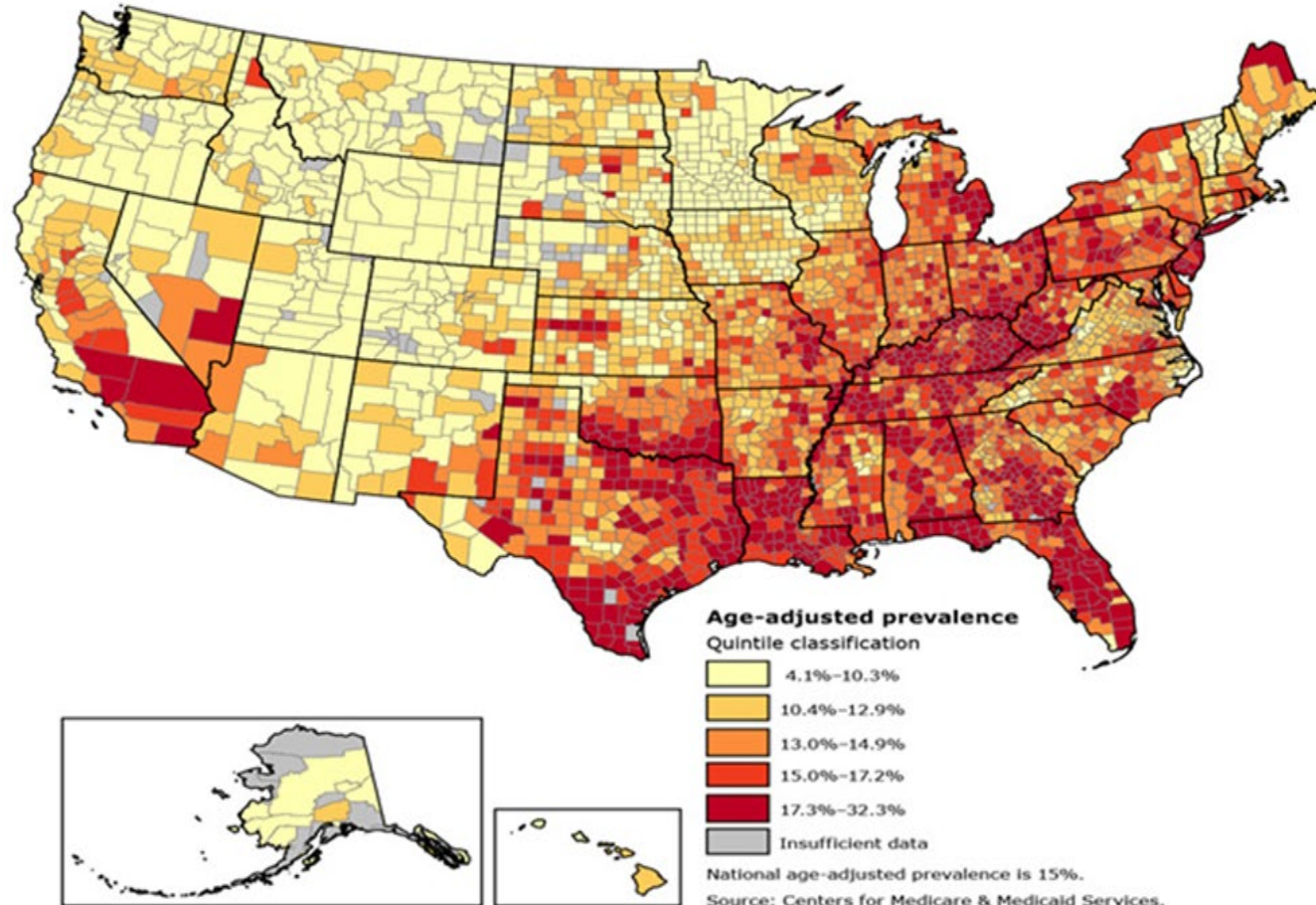
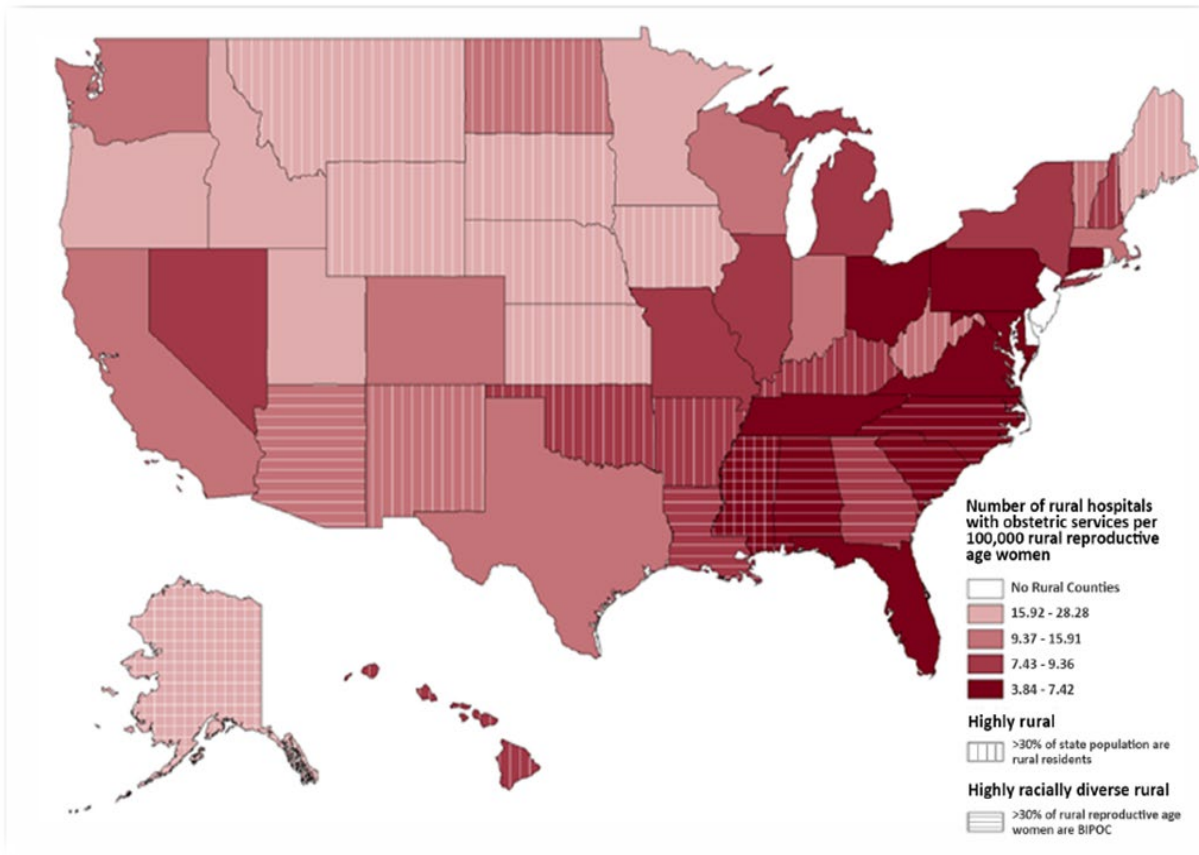


Table 1. Prevalence of Diseases, by Income, 2011 (percent of adults)

DISEASE OR ILLNESS	ANNUAL FAMILY INCOME				
	Less than \$35,000	\$35,000– 49,999	\$50,000– 74,999	\$75,000– 99,999	\$100,000 or more
Coronary heart disease	8.1	6.5	6.3	5.3	4.9
Stroke	3.9	2.5	2.3	1.8	1.6
Emphysema	3.2	2.5	1.4	1.0	0.8
Chronic bronchitis	6.3	4.0	4.4	2.2	2.4
Diabetes	11.0	10.4	8.3	5.6	5.9
Ulcers	8.7	6.7	6.5	4.7	4.4
Kidney disease	3.0	1.9	1.3	0.9	0.9
Liver disease	2.0	1.6	1.0	0.6	0.7
Chronic arthritis	33.4	30.3	27.9	27.4	24.4
Hearing trouble	17.2	16.0	16.0	16.2	12.4
Vision trouble	12.7	9.8	7.5	5.7	6.6
No teeth	11.6	7.8	5.5	4.2	4.1

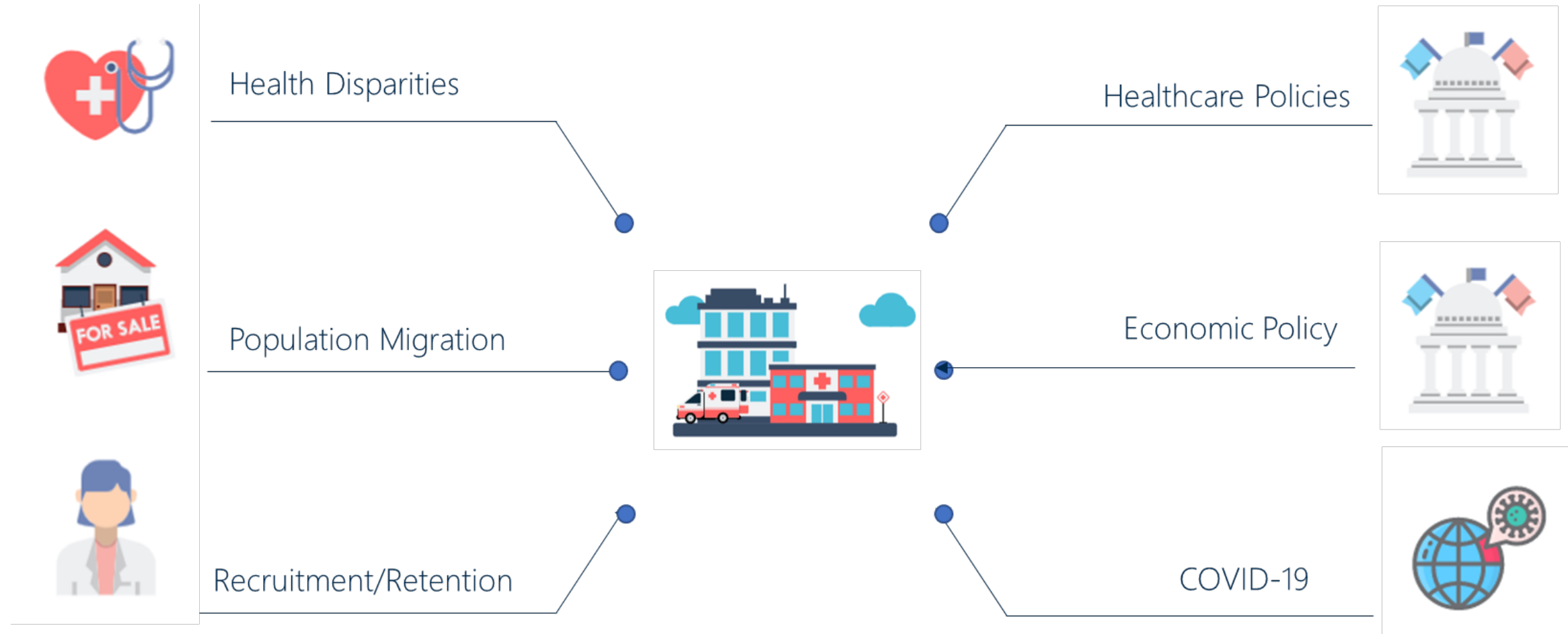
Source: J. S., Schiller, J. W. Lucas, and J. A. Peregoy, “Summary Health Statistics for U.S. Adults: National Health Interview Survey, 2011.” Vital and Health Statistics 10, no. 256 (2012): 1–207, tables 1, 4, 8, and 12. http://www.cdc.gov/nchs/data/series/sr_10/sr10_256.pdf.

Maternity Deserts Nationwide

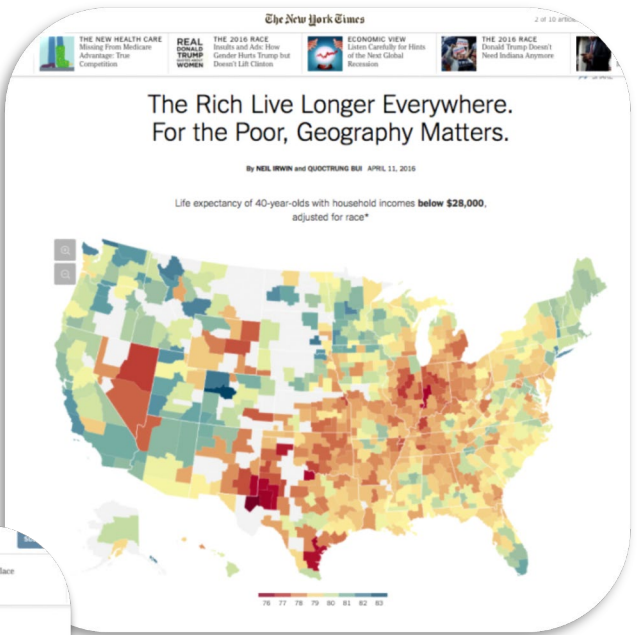
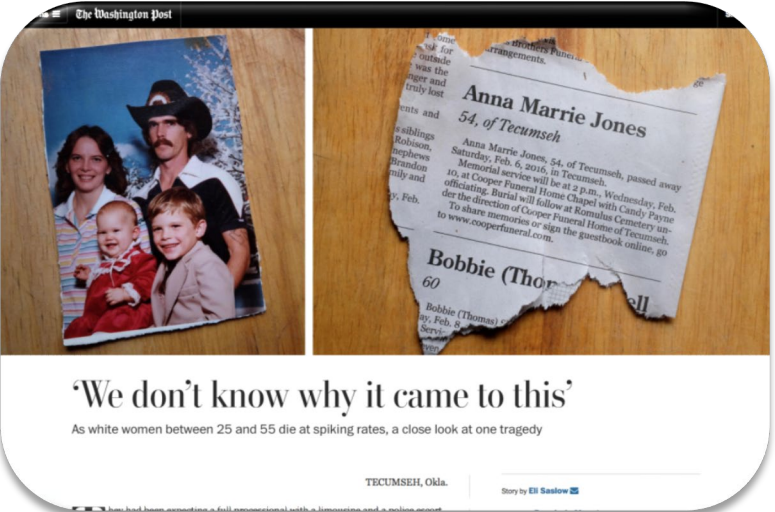


- 56% of rural counties lack hospital-based OB services
- Substantial state and regional variability
- Loss of hospital-based OB services is most prominent in rural communities:
 - With a high proportion of Black residents
 - Where a majority of residents are Black or Indigenous have elevated rates of premature death

Rural Hospitals: Convergence of Multiple Pressure Points

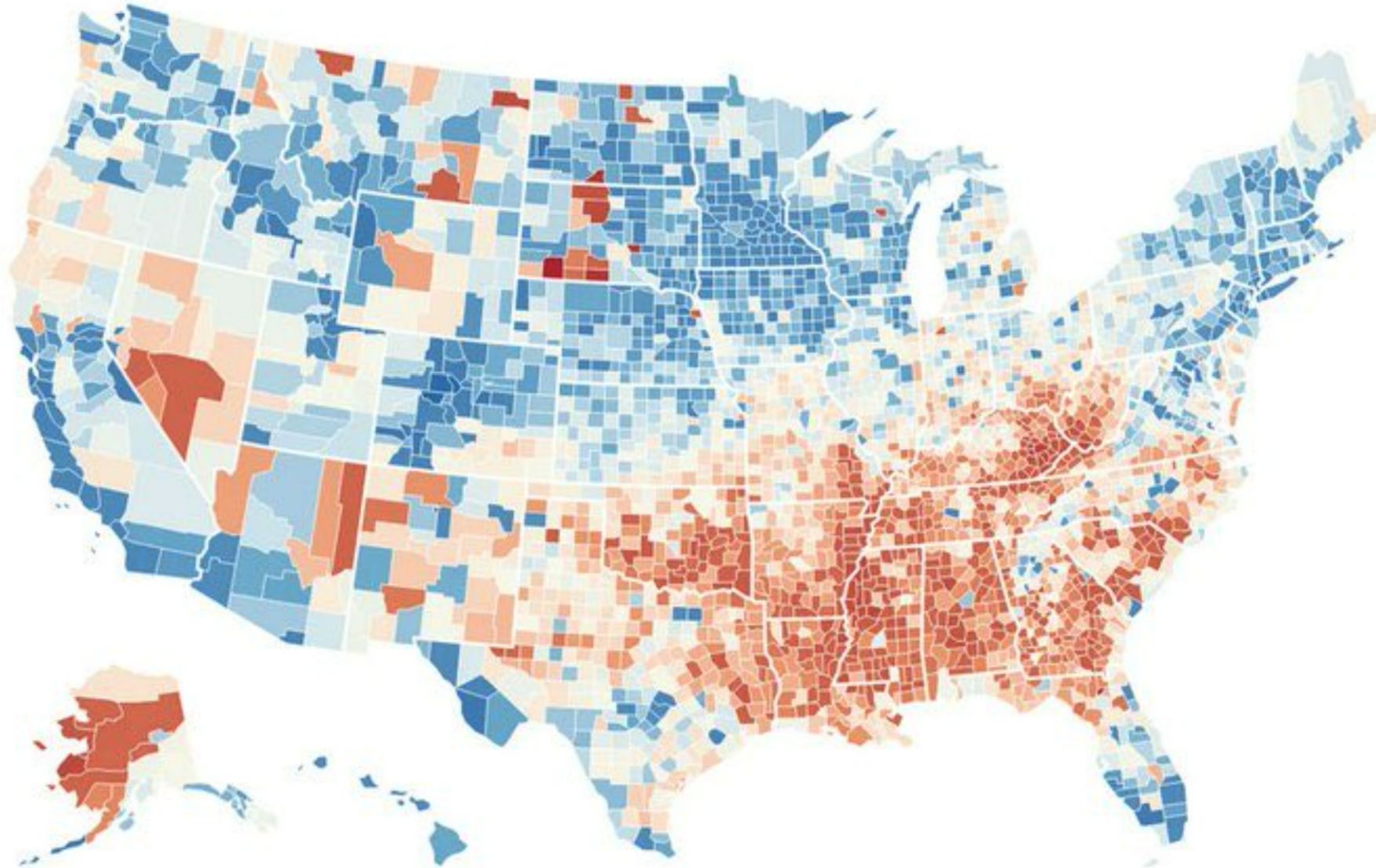


Declining Life Expectancy

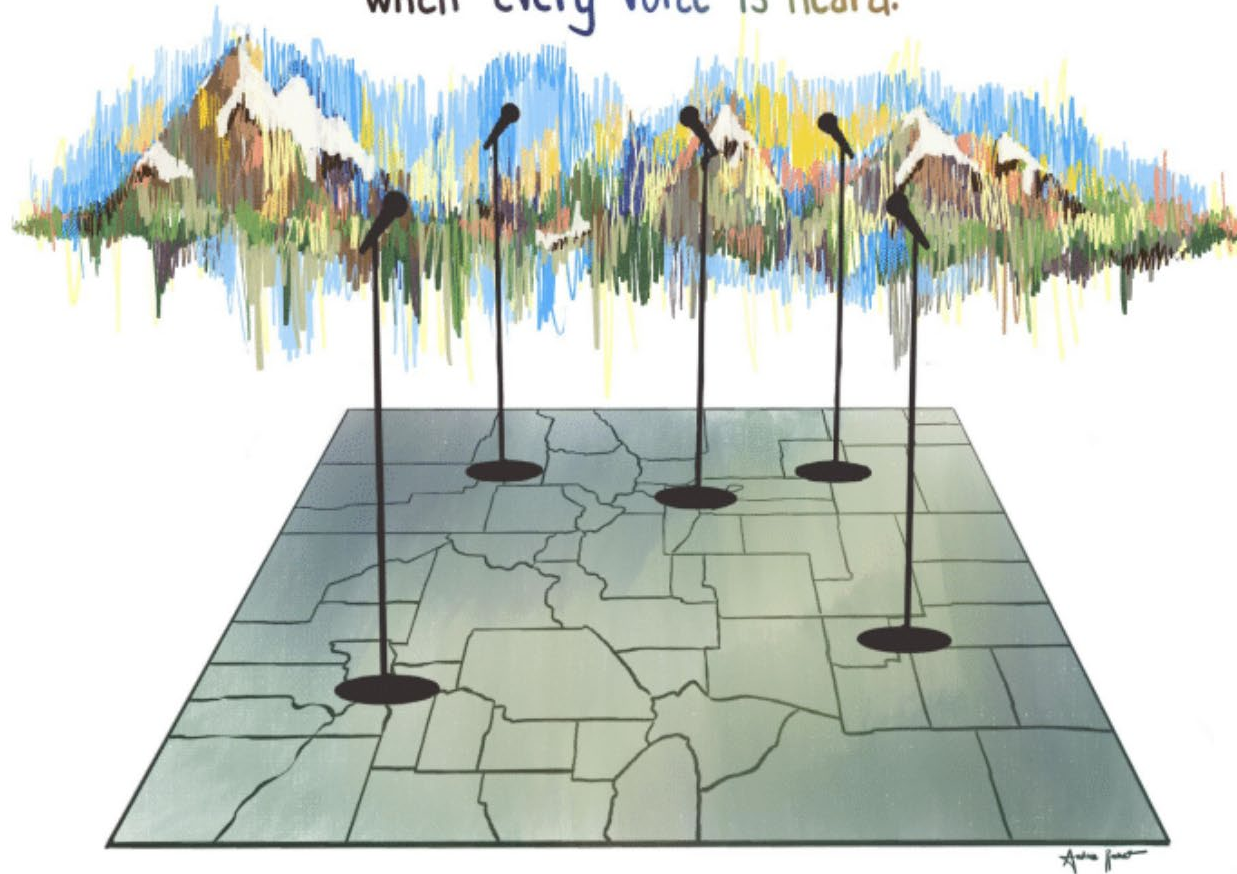


Life Expectancy in America

Average age at death



We only see the full picture
when every voice is heard.



Artist Credit: [Andrea Rochat](#)

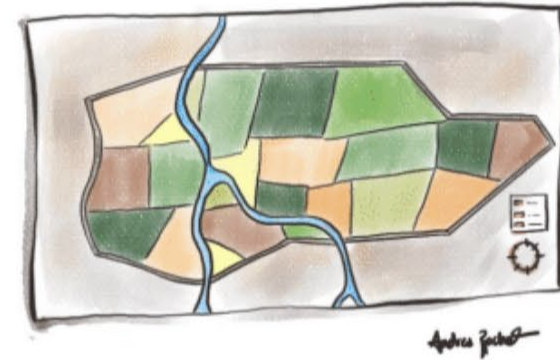
THE FRONTLINE



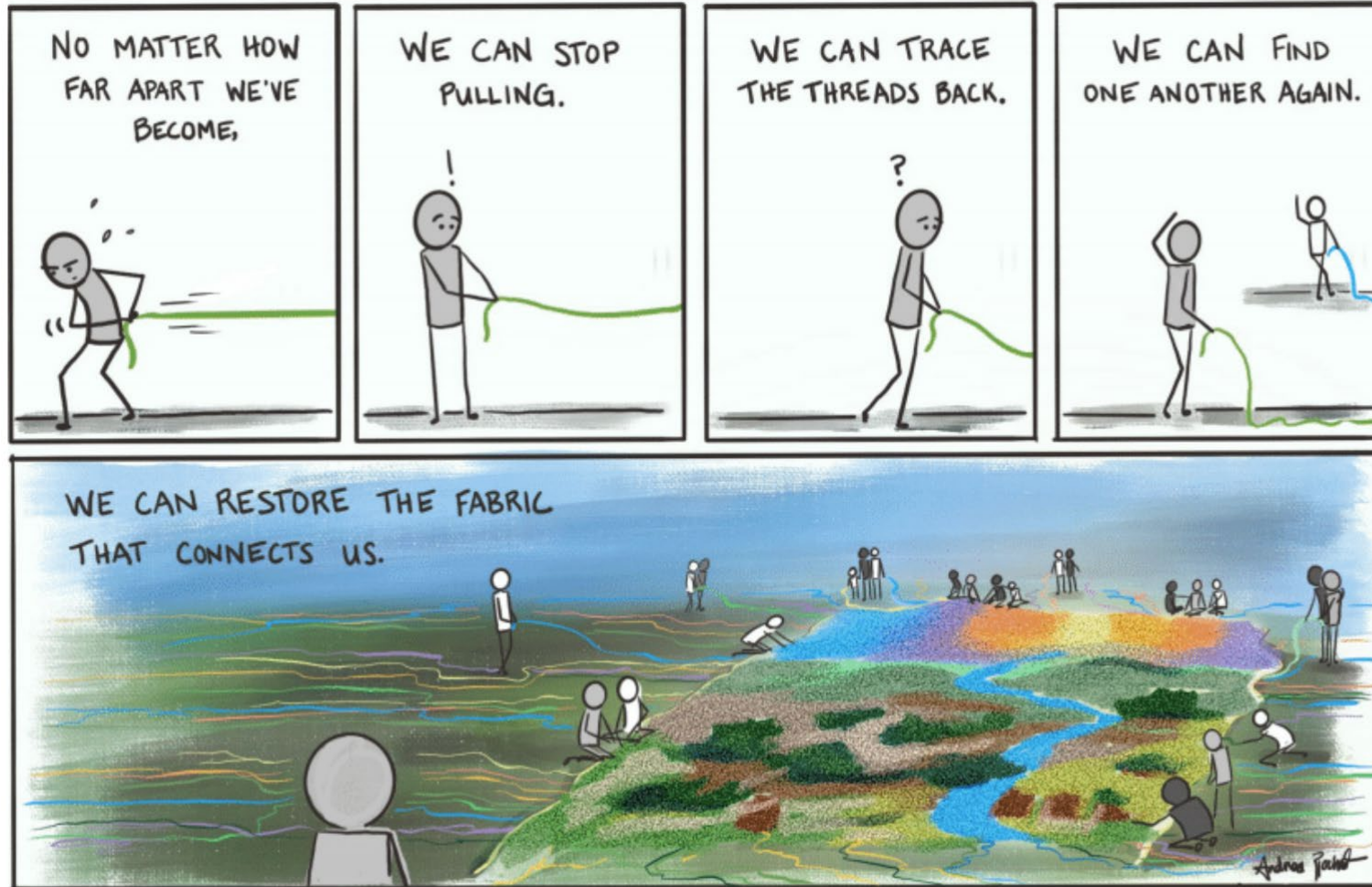
LEADERSHIP




GOVERNANCE



Artist Credit: [Andrea Rochat](#)



Artist Credit: [Andrea Rochat](#)

 Thank You!



John Henderson

| jhenderson@torchnet.org

| (512) 873-0045

| www.torchnet.org

| @torchnet