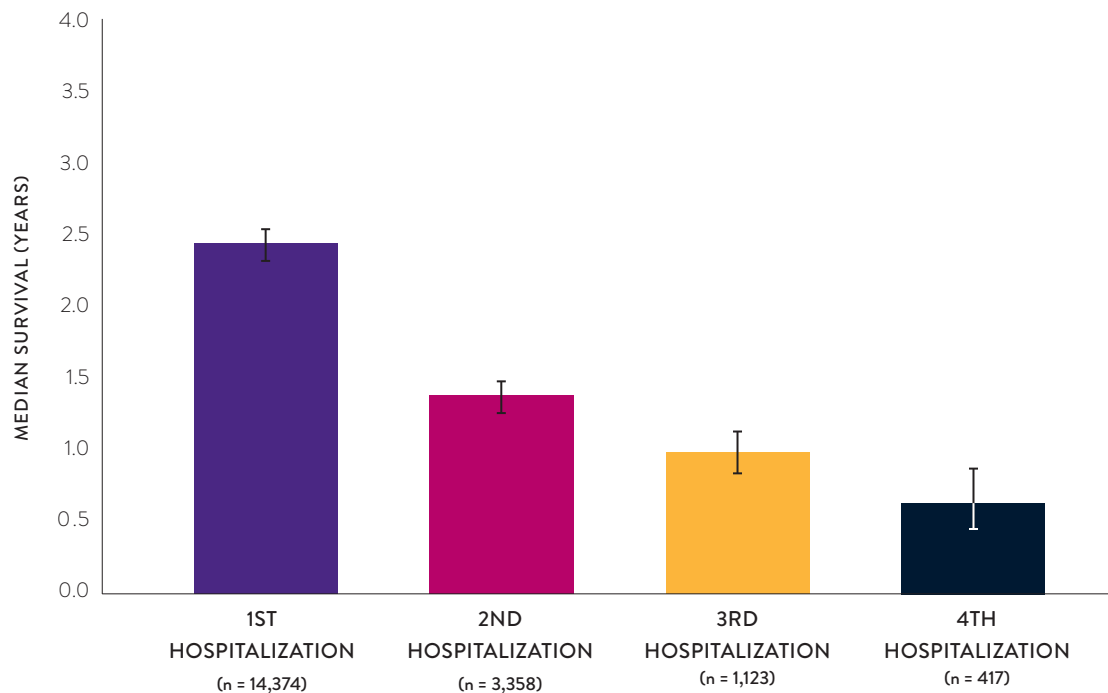


EVERY HEART FAILURE HOSPITALIZATION INCREASES YOUR PATIENTS' RISK FOR DEATH³

Repeat hospitalizations are associated with decreased survival of less than 2 years³



WHAT ARE THE PATIENT CONSEQUENCES OF LATE REFERRALS FOR ADVANCED THERAPIES?

- Patient decline
- Pain and suffering, family strain
- Cost to the system (readmissions)
- Poor outcomes
- Too late for therapy (death)

DID YOU KNOW?

Heart failure hospitalizations can be decreased by **58%** by monitoring PA pressures remotely with the CardioMEMS™ HF System⁶

