

NO BOUNDARIES

*Human Trafficking*

INTERNATIONAL

## *A little about us...*

NBI is here to help those in hard places with an emphasis on human trafficking. Our goal is to love others without an agenda, without judgement, and without condemnation.

No Boundaries International is a faith based 501(c)3 organization dedicated to bringing hope to those that are hopeless. Whether it's the prostituted woman, the at risk child, or those struggling with brokenness and addiction, we reach out on a street level to provide realistic solutions to those in need.



*Restoration ~ Training ~ Outreach*

## *A few of our team...*

Dr. Traci Rogers is the Executive Director of No Boundaries International Amarillo. She has led the team here since it began in 2013. Before No Boundaries, Dr. Traci served as a Children's Pastor and Disaster Relief Chaplain. She has been in vocational ministry for over 24 years. She has a masters degree in Theology with a focus on Christian Counseling and a doctorate in Sacred Studies. She loves people really well and carries a heart to see those stuck in the life of human trafficking set free and living their God given design. Dr. Traci travels both nationally and internationally to areas including the Middle East, Africa, Dominican Republic, Latin America, Los Angeles, South Dakota and many more bringing her expertise to various populations in need of help.

Amber Coppock is the Executive Assistant for No Boundaries International Amarillo. She has 30 years experience in administration and has served at No Boundaries since 2014. She has a huge heart and strives to love those in front of her with the same love Jesus has shown her. Amber has traveled both nationally and internationally sharing her heart for the hurting.

Kaytlin Wyatt is the Victim Services Coordinator for No Boundaries International Amarillo. As a licensed social worker, Kaytlin combines her education with her passion to serve the hurting both locally and globally. From the time she was a young child, she knew she wanted to be in vocational ministry and has served with No Boundaries since 2013. Her heart is to advocate for those who are stuck in the life of human trafficking and walk with them as Jesus brings restoration to every area of their lives.

**\*\*All of our staff are 100% volunteer missionary staff.\*\***

# *The* **WHY'S** **OF THIS CLASS**

*What if...*

- Every professional could identify signs that indicate that a person is a potential victim of human trafficking.
- We all identified promising practices for assisting a person that may be a potential victim of human trafficking.
- Everyone understood what human trafficking looks like in the panhandle.

# *Our Journey*

Our desire is to be ready to go wherever we are needed, never stepping over our own city, state, and nation. We believe that we have to continue the work here as we go into the darkest of dark places. Here are a few of those places that we've worked:

- In Texas – Abilene, Amarillo, Canyon, Dallas, Dimmit, El Paso, Follet, Friona, Groom, Hereford, Houston, Lubbock, Midland, Odessa, Pampa, Perryton, San Antonio, Texhoma, Umbarger, Wichita Falls, Whitedeer
- Nationally – Arkansas, California, Colorado, Oklahoma, Oregon, Illinois, Kansas, Michigan, Minnesota, New York, South Dakota
- Internationally – Africa, Dominican Republic, Ecuador, Egypt, Lebanon, Mexico

## *What is human trafficking*

Human trafficking is defined by the United Nations as

"the recruitment, transportation, transfer, harboring or receipt of persons, by means of the threat or use of FORCE or other forms of COERCION, of abduction, of FRAUD, of deception, of the abuse of power or of a position of vulnerability or of the giving or receiving of payments or benefits to achieve the consent of a person having control over another person, for the purpose of exploitation."

Within the United States, the Trafficking Victims Protection Act of 2000, as amended, provides the tools to combat trafficking in persons both worldwide and domestically. The Act authorized the establishment of the State Department's TIP Office and the President's Interagency Task Force to Monitor and Combat Trafficking in Persons to assist in the coordination of U.S. government anti-trafficking efforts. Internationally, several conventions, in particular the United Nations Protocol to Prevent, Suppress, and Punish Trafficking in Persons, Especially Women and Children, supplementing the United Nations Convention against Transnational Organized Crime (Palermo Protocol), set out international standards for combating trafficking in persons.



# Trafficking vs Smuggling

Human Trafficking is defined as:

- sex trafficking in which a commercial sex act is induced by force, fraud, or coercion, or in which the person induced to perform such act has not attained 18 years of age; or
- the recruitment, harboring, transportation, provision or obtaining of a person for labor or services through the use of force, fraud, or coercion for the purpose of subjection to involuntary servitude, peonage, debt bondage or slavery.

Human Smuggling is defined as the importation of people into the United States involving deliberate evasion of immigration laws. This offense includes bringing illegal aliens into the United States as well as the unlawful transportation and harboring of aliens already in the United States.

## Type of Human Trafficking

- LABOR
- INVOLUNTARY DOMESTIC SERVITUDE
- SEX TRAFFICKING
  - Pornography
  - Stripping
  - Live Sex Shows
  - Mail Order Brides
  - Military Prostitution
  - Sex Tourism
  - Prostitution (Most visible form of sex trafficking, but not all prostitution is sex trafficking)



*Sometimes we  
just need to  
be the monkey  
in the cage*

# Risk Factors/Suspected Causes

- Poverty/desire for a better life
- Ignorance
- Disruption of societal values
- Political and economic instability
- Demand for cheap labor
- High profits/"good money"
- Abuse/neglect
- Homelessness
- LOW SELF-ESTEEM
- Limited education
- Family dysfunction
- REBELLION
- Truancy
- Drug Use
- Delinquency
- SEARCHING FOR LOVE AND AND SELF-VALUE

## Quotes from those Trafficked

- "People always let me down."
- **"I have been raped by a youth pastor and a police officer."**
- "I feel ashamed, idiotic, and condemned."
- "It's my fault."
- **"I told my teacher, but she didn't believe me."**
- "I became the bottom 'girl'."
- "I started using to ease the pain. When I used , my dreams for the future stopped.:
- "I don't think I'll ever dance again. There's nothing good about being molested constantly, viewed as an object, threatened, or intoxicated just to get by."
- **"I had to have 10 toes in the street to make my daily quota."**



# Players in the Life: The Women

*"I've been held down like a piece of meat while monsters disguised as men violated me again and again."*

~ Gladys Lawson, Blood Borne Connections

# Players in the Life: The Children

*"I smile, but I hurt"*



## Traumatic-Bonding/Conditioning

- Trauma Bonding: Strong emotional ties that develop when one person intermittently harasses, beats, threatens, abuses or intimidates the other. The following are present:
  - An imbalance of power.
  - Sporadic highly intensive positives mixed in with abuse.
    - Intermittent rewards: you may get a treat and you may not, but you keep trying to see what happens next (slot machine, social media).
  - Denial for self protection.
    - Dissociation: Experience it as if it is not happening to them (like watching a movie).
    - Cognitive Dissonance: Self preservation that distorts and over rides the truth with a victim developing a tolerance for the abuse and normalizes the abusers behavior.
  - Distortion: can't accurately evaluate danger and can't perceive alternatives to the situation.

## 16 year old Case Study

- Trust needs of a 1 year old
- "Who's the boss" of a 2 year old
- Concrete thinking of a 4 year old
- Social Skills of an 8 year old
- Body of a 16 year old
- Street smarts of a 27 year old

## Where?

- School
- Parks
- Grocery Stores
- Movie Theatre
- Mall
- SOCIAL MEDIA

# Strategies for Personal Safety

- Beware of power dynamics
- Don't give the trafficker any indication that you are aware of what's really happening. Be respectful.
- Be cautious in providing your personal information. Best practice is an office number or agency that can handle calls.
- Know your facility's protocols
- Prepare a resource list that you can give to the victim
- If you see them outside the facility, let them make the first move
- Be transparent with the victim. If calling law enforcement or social services, let them know.

## Patient/Provider Dynamics

*Trafficking victim may show signs of mental health issues:*

- *Trauma bonding (Stocholm Syndrome)*
- *Lack of emotion*
- *Down play risks of existing health problems*
- *Not self-identify as a victim*
- *Refuse services or assistance*
- *Give conflicting stories or misinformation*
- *Resist cooperation with law enforcement, social workers, or others*

## Strength-Based Empowerment Approach

- Be sensitive to power dynamics
- Provide options
- Do not make promises
- Meet immediate needs
- Expect trust to take time
- Ask open ended questions
- Use language the victim is using
- Avoid re-traumatization or secondary traumatization



# *How long will this take?*

- 1 month for every year of age for sustained change
- 400 repetitions of an action to create new synaptic activity in the brain for a new pathway to be formed
- What age did they run away, start utilizing substances, experience trauma? That may be their developmental age socially and psychologically
- Learning isn't linear
  - Great strides and back slides
  - Learn to walk with sits and starts
  - Disorder and chaos precedes new order

# *Tips for Working with Potential Victims*

## DO

- Follow protocols for victims
- Meet alone
- Ask open ended questions using safe, non-judgmental tone
- Explain reporting obligations when children are involved
- Provide options or choices

## DON'T

- Make assumptions
- Communicate disgust or disdain
- Contact others including law enforcement without telling the victim
- Force them to make decisions they aren't comfortable with

# Know the language...

**AUTOMATIC** – A term denoting the victim's "automatic" routine when her pimp is out of town, in jail, or otherwise not in direct contact with those he is prostituting. Victims are expected to comply with the rules and often do so out of fear of punishment or because they have been manipulated into a sense of loyalty or love. All money generated on "automatic" is turned over to the pimp. This money may be used to support his concession/phone account or to pay his bond if he's in jail.

**BOTTOM** – A female appointed by the trafficker/pimp to supervise the others and report rule violations. Operating as his "right hand", the BOTTOM may help instruct victims, collect money, book hotel rooms, post ads, or inflict punishments on other girls.

**BRANDING** – A tattoo or carving on a victim that indicates ownership by trafficker/pimp/gang

**BROTHEL (AKA CATTHOUSE OR WHOREHOUSE)** – These establishments may be apartments, houses, trailers, or any facility where sex is sold on the premises. It could be in a rural area or nice neighborhood. Most brothels have security measures to prevent attacks by other criminals or provide a warning if law enforcement are nearby. The security is two sided-to keep the women and children in, as well as robbers out. The places often are guarded (and open) 24 hours a day, but some have closing times in which the victims are locked in from the outside. Victims may be kept in this location for extended periods of time, or rotated to other locations every few days.

**CAUGHT A CASE** – A term that refers to when a pimp or victim has been arrested and charged with a crime.

**CHOOSING UP** – The process by which a different pimp takes "ownership" of a victim. Victims are instructed to keep their eyes on the ground at all times. According to traditional pimping rules when a victim makes eye contact with another pimp (accidentally or on purpose), she is choosing him to be her pimp. If the original pimp wants the victim back, he must pay a fee to the new pimp. When this occurs, he will force the victim to work harder to replace the money lost in transaction.

**CIRCUIT** – A series of cities among which prostituted people are moved. One example would be Houston, Dallas, Amarillo, Lubbock and the towns between. The term can also refer to a chain of states such as Texas, Oklahoma, Louisiana.



**DADDY** – The term a pimp will often require his victim to call him

**DATE** – The exchange when prostitution takes place, or the activity of prostitution. A victim is said to be "with a date" or "dating"

**ESCORT SERVICE** – An organization, operating chiefly via cell phone and the internet, which sends a victim to a buyer's location (an "outcall") or arranges for the buyer to come to a house or apartment (an "incall"); this may be the workplace of a single woman or a small brothel. Some escort services are networked with other and can assemble large number of women for parties and conventions.

**FAMILY/FOLKS** – The term used to describe the other individuals under control of the same pimp. he plays the role of father (or "Daddy") while the group fulfills the need for a family.

**FINESSE PIMP/ROMEO PIMP** – One who prides himself on controlling others primarily through psychological manipulation. Although he may shower his victims with affection and gifts (especially during the recruitment phase), the threat of violence is always present.

**GORILLA PIMP** – A pimp who controls his victims almost entirely through physical violence and force

**JOHN (AKA BUYER OR TRICK)** – An individual who pays for or trades something of value for sexual acts

**MADAM** – An older woman who manages a brothel, escort service or other prostitution establishment. She may work alone or in collaboration with other traffickers

**OUT OF POCKET** – The phrase describing when a victim is not under control of a pimp but working on a pimp-controlled track, leaving her vulnerable to threats, harassment, and violence in order to make her "choose" a pimp. This may also refer to a victim who is disobeying the pimp's rules.

**PIMP CIRCLE** – When several pimps encircle a victim to intimidate through verbal and physical threats in order to discipline the victim or force her to choose up.

**QUOTA** – A set amount of money that a trafficking victim has to make.



**SEASONING** – A combination of psychological manipulation, intimidation, gang rape, sodomy, beatings, deprivation of food or sleep, isolation from friends or family and other sources of support and threatening or holding hostage of a victim's children. Seasoning is designed to break down a victim's resistance and ensure compliance.

**RENEGADE** – A person involved in prostitution without a pimp.

**SQUARING UP** – Attempting to escape or exit prostitution

**STABLE** – A group of victims who are under the control of a single pimp.

**THE GAME/THE LIFE** – The subculture of prostitution, complete with rules, a hierarchy of authority, and language. Referring to the act of pimping as "the game" gives the illusion that it can be a fun and easy way to make money, when the reality is much harsher. Women and girls will say they've been "in the life" if they've been involved in prostitution for a while.

**TRACK (AKA STROLL OR BLADE)** – An area of town known for prostitution activity. This can be the area around a group of strip clubs and pornography stores, or a particular stretch of a street.

**TURN OUT** – To be forced into prostitution or a person newly involved in prostitution

**WIFEY/WIFE-IN-LAW/SISTER WIFE** – What women and girls under the control of the same pimp call each other.

<https://www.dhs.state.il.us/OneNetLibrary/27897/documents/initiative/humantrafficking/human-trafficking-glossary-of-terms.pdf>

<https://sharedhope.org/the-problem/trafficking-terms/>



# *Barriers to Accessing Services*

- Fear of arrest, incarceration
- Fear of retribution by exploiter
- Control of movement by exploiter
- For minors: fear of being returned to family, fear of placement in social services

## *Brainstorm*

- How do you interact with the potential victim?
- How do you assess potential danger for yourself and the victim?
- What referrals might you provide to the victim?
- What are your reporting and confidentiality protocols?
  - Report as necessary, internally or externally
- How can you avoid communicating disgust or disdain?
- Talk to the victim about strategies for personal safety.
- Know what resources are available in your area.

**NATIONAL HUMAN  
TRAFFICKING HOTLINE**

**Call 888-373-7888**

**Text 233733**



## *Red Flags: Commercial Sex*

- Persistent or untreated STI's or UTI's
- Abnormally high number of sex partners
- Using language from "the life"
- Presence of cotton or debris in vagina
- Trauma to vagina or rectum
- Problems with jaw or neck
- Repeated abortions or miscarriages
- Unintended pregnancies or fertility problems

## *Red Flags: Force and Abuse*

- Hematoma or contusions
- Lacerations or scarring
- Missing or broken teeth
- Injuries to the head or black eyes
- Dislocated limbs or fractures
- Bald spots
- Burns (cigarette)
- Miscarriages caused by potential abuse

## *Red Flags: Coercion/Control*

- Inability to keep appointments or follow care instructions
- Unable to present identification documents
- Addictive behaviors
- Accompanied by a person that doesn't let the person speak
- Malnutrition, untreated medical problems

## *Rapid Assessment Questions*

- Who is this person who came with you today? Can you tell me about him or her?
- Did you ever feel pressured to do something that you didn't want to do or felt uncomfortable doing? How did you feel pressured?
- Do you feel you were ever tricked or lied to? Were you ever promised something, but it didn't happen?
- Has anyone ever approached you asking you to get involved in prostitution?
- Have you ever had to trade sex for money or something else you needed?
- Does anyone supervise or monitor your conversations with family or friends?
- Did anyone take and keep your ID?
- What does that tattoo mean?





# NO BOUNDARIES INT. VICTIM HOTLINE

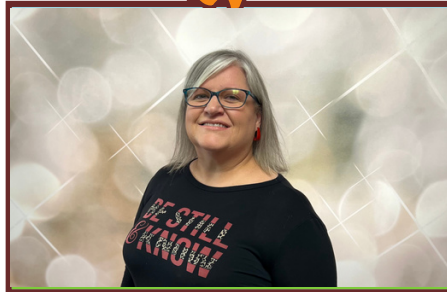
**Call or Text  
806-673-1598**

## *What We Do - Local & Global*

- RESTORATION
  - Brain Bootcamp
  - Inner Healing
  - John School
  - Victim Assistance
- TRAINING
  - Professionals, Law Enforcement, School, Medical, Social Services, Churches
  - Worship
  - Discipleship
- OUTREACH
  - Community Meals
  - Food Pantry
  - Hotel Outreach
  - Online Outreach
  - Strip Club Outreach



*Dr. Traci Rogers*  
Executive Director  
traci@nbiamarillo.org



*Amber Coppock*  
Executive Assistant  
amber@nbiamarillo.org



*Kaytlin Wyatt, LBSW*  
Victim Services Coordinator  
kaytlin@nbiamarillo.org

**904 N. Grand ~ Amarillo, TX 79107  
806-576-2501 ~ [www.nbiamarillo.org](http://www.nbiamarillo.org)**

