

# How to Navigate the Virtual ASHP Midyear Clinical Meeting

**Steven Pass, PharmD, MEd, FCCM, FCCP, FASHP, BCPS**

**Professor and Vice Chair for Residency Programs**

**Dallas Campus Regional Dean**



**TEXAS TECH UNIVERSITY  
HEALTH SCIENCES CENTER™**

*School of Pharmacy*

# Topics

- Overview the ASHP Virtual Midyear Clinical Meeting
  - Meeting agenda
  - Residency Showcase
  - Personnel Placement Service (PPS)
- Where to find info:
  - <https://midyear.ashp.org/>
- Student info:
  - <https://www.ashpmidyeardailynews.org/previews/article/21796493/student-survival-guide-to-the-virtual-midyear-clinical-meeting>

# Office of Professional Affairs SAKAI Site

**HELPFUL DOCS AND LINKS**

Site Resources | Trash | Check Quota

[All site files](#) / [Professional Affairs Resources](#) / Residency Information

Move | Copy | Move to Trash | Show | Hide

**Title** 

 [Residency Information](#)

 [All School Residency Prep 2020](#)

 [ASHP Midyear Prep - Dr. Pass - 2020](#)

# Office of Residency Programs Site

Pharmacy Residency Programs | x +

https://www.ttuhsu.edu/pharmacy/residencies/

ABOUT PROGRAMS ADMISSIONS DEPARTMENTS FUNDING YOUR EDUCATION CONTACT US

COVID-19 Guidance & SAFE Information

## Pharmacy Residency Programs

Home > School of Pharmacy > Residencies

Pharmacy Residency Program Home

Vice-Chair's Welcome

Current Programs

Current Residents

Application Information

**Information for Students**

Residency Match Results

Teaching and Learning Curriculum (TLC) Program

2020 Resident Research Virtual Poster Sessions

Class of 2021 Residency Match Results

TTUHSU: Your Life, Our Purpose

Watch later Share

### Newsletter

The newsletter is published quarterly for graduates of TTUHSC Jerry H. Hodge School of Pharmacy Residency Programs.

Spring/Summer 2021

#### Newsletter Archives

#### Resources

- ASHP - Coronavirus Disease 2019 (COVID-19)
- Information for Students
- Residency Manual (2021-2022)
- Tech-paid Resident

Windows taskbar: Student Survival Guid..., ASHP Midyear Meetin..., Pharmacy Residency P... 8:54 AM

# MCM Survival Tips

- Pre-plan your participation
  - Look through the online schedule
  - Some events are live
  - Some are “on demand”
- Session times
  - All listed as EST
- Test technology
  - ASHP recommends Chrome or Firefox
  - No VPN
- Follow ASHP on [Twitter](#), [Instagram](#), [Facebook](#), and [LinkedIn](#)
  - official Midyear hashtag: #ASHP21

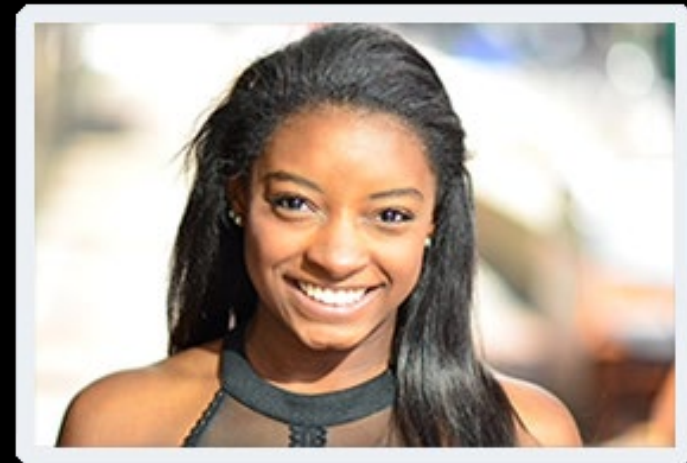
Live Events

# Meeting agenda

- Agenda link:
  - <https://www.eventscribe.net/2021/midyear/index.asp>
  - Can search by:
  - Schedule
    - Date
    - Track
    - Topic categories
  - Presenter names
  - Posters

# Opening Session and Keynote

- Monday, December 6, 10 am-11:30 am CST
  - Agenda
    - A Conversation with Simone Biles
      - Well-Being and Resilience
    - Presidential Address
    - CEO Award for Staff Excellence
    - ASHP Board of Directors' Awards
    - Award Acknowledgements
      - Donald E. Franke Medalist
      - ASHP-ABHP Joint Leadership Award
      - Award for Sustained Contributions to the Literature
      - *Student Counseling Competition*





# Virtual Exhibit Hall

- Monday, December 6: 12 – 3 pm CST
  - Tuesday, December 7: 12 – 3 pm CST
  - Wednesday, December 9: 12 – 3 pm CST
  - Thursday, December 10: 12 – 2 pm CST
- 
- <https://midyear.ashp.org/for-exhibitors?loginreturnUrl=SSOCheckOnly>

# Student Poster Sessions

| Date                  | Time       |
|-----------------------|------------|
| Tuesday, December 7   | 4 – 5 pm   |
| Wednesday, December 8 | 4 – 5 pm   |
| Thursday, December 9  | 10 – 11 am |

# Educational Seminars

- Check schedule / itinerary planner site:
- <https://www.eventscribe.net/2021/midyear/>
- Live programming only offered as scheduled
- On-demand at any time

# Networking Roundtables

- Sunday, December 5: 12 – 1 pm
  - Ambulatory Care Clinical Practice Advancement
  - Compounding Practice
  - Inclusivity in Pharmacy Education
  - New Practitioner
  - Nutrition Support
  - Pediatrics / Neonatal
  - Population Health Partnerships and Hospital at Home Development
  - Specialty Pharmacy Accreditation Best Practice

# Networking Roundtables

- Monday, December 6: 9 – 10 am
  - Cardiology
  - Clinical Applications
  - Community Pharmacy Strategic Priorities
  - Emergency Medicine
  - Investigational Drug Services
  - Psychiatry / Neurology
  - Recruiting, Training, and Developing a Technician Workforce
  - Specialty Pharmacy Clinical Management

# Networking Roundtables

- Monday, December 6: 12 – 1 pm
  - Ambulatory Care Pharmacotherapy
  - Anticoagulation
  - Critical Care
  - Future Educational Workforce Trends
  - Pharmacy Technicians
  - Women in Pharmacy Leadership

# Networking Roundtables

- Tuesday, December 7: 12 – 1 pm
  - Ambulatory Billing
  - Hematology / Oncology
  - Operations and Automations
  - Precepting Students
  - Specialty Pharmacy Summit Recommendations – Creating Momentum for Change
  - Transitioning to New Leadership Roles and Staff Development in Leadership
  - Well-Being and Resilience

# Networking Roundtables

- Wednesday, December 8: 12 – 1 pm
  - A Year in Review – Community Pharmacy Practice Innovations
  - Clinical Decision Support and Analytics
  - Emerging Sciences and Pharmacogenomics
  - Infectious Diseases
  - Medication Safety
  - Pain Management and Palliative Care
  - Pharmacoeconomics and Population Health
  - Work Models and Leadership Approaches for a Remote Workforce



# Networking Roundtables

- Thursday, December 9: 12 – 1 pm
  - Diversity, Equity, and Inclusion – Focus on Health-Systems
  - Drug Policy and Clinical Leadership
  - Geriatrics
  - Immunology / Transplant
  - Informatics Professional Development
  - Internal Medicine
  - Small and Rural Hospitals
  - Translating Data for Frontline Utilization

# On Demand Events

# Student Programming

- All Student programming is On-Demand
  - Only exception is the poster sessions
- Will be available from the meeting start to several weeks after
- <https://midyear.ashp.org/information-by-audience/student-programming?loginreturnUrl=SSOCheckOnly>

# Student Programming

- Residency Preparation Sessions:
  - Congrats!! You Matched
  - PhORCAS: The Centralized Application System for Pharmacy Residencies
  - Re-Write Your Script: Tips and Tricks for Acing Your Residency Interview
  - Market Yourself Effectively for Residency: Improving Your Curriculum Vitae and Letter of Intent Messaging
  - A Roadmap for Publishable Research: How to Make the Most of Your Research Project
  - Preparing for the Worst Case Scenario: When You Find Yourself Unmatched for Residency

# Student Programming

- Professional Development Sessions:
  - Pharmacy Student Forum Opening Session
  - SSHP Leaders Workshop
  - Just Do It: Create Your Brand
  - Thanks for the Feedback – The Art of Receiving Feedback...Even When You Don't Ask For It
  - The Power of Professional Relationships and Tips for Student Success
  - The Tale of Two Pharm.D.s: Finding Your Best Fit for Student Loan Repayment
- Student Society Showcase

# ASHP Podcasts

- [Virtual Residency Recruitment - Advice from Residency Program Leaders](#)
- [Etiquette Tips for Virtual Interviews and Networking During Residency Season](#)
- [Virtual Fellowship Recruitment - Advice from Fellowship Program Leaders](#)

# Residency showcase

- Monday, December 6      2:00 - 5:00 pm
- Tuesday, December 7      9:00 am- 12:00 pm
- Tuesday, December 7      2:00 - 5:00 pm

# Residency showcase

- List of participating programs:
  - <https://docs.google.com/spreadsheets/d/1Ml10pXGmtTdXLgRZjINLLiMIFqvjOWcHdKrW8tdW5aM/edit#gid=187810535>
- Program listings:
  - <https://residencyshowcase.ashp.org/jobs>
  - <https://midyear.ashp.org/-/media/midyear-conference/docs/2018/2018-Residency-Showcase-Portal-Candidate-Instructions.ashx>
- Tips:
  - <https://midyear.ashp.org/residency-showcase---prospective-residents?loginreturnUrl=SSOCheckOnly>



# Residency showcase

- Most programs are represented
  - No VA programs
- Staffed by the program director, preceptors, current residents
- Advice:
  - Dress professionally
  - Watch your background and camera angles
  - Do your homework
  - Get in there and talk!
    - Talk with a preceptor
    - Talk to a current resident
  - Ask questions
  - Have CV ready (in pdf format) if needed
  - Take notes to help keep everything straight

# ASHP Tips

- The Residency Showcase is intended for the graduating class of 2022
  - *NOTE to P1-P3 students:*
    - *Please wait until the second half of the session to enter the showcase*
    - *Please attend the student educational sessions On Demand*
- Your registration to the Midyear meeting allows you to participate in the showcase
  - No additional fees are necessary
- Prepare in advance:
  - Beginning in early November, view the Residency Showcase Listing
  - Determine which sites you want to visit during the showcase
  - Find out the date and time those sites will be at the showcase
  - Programs are listed by site, not by specific type of residency program offered

# ASHP Tips

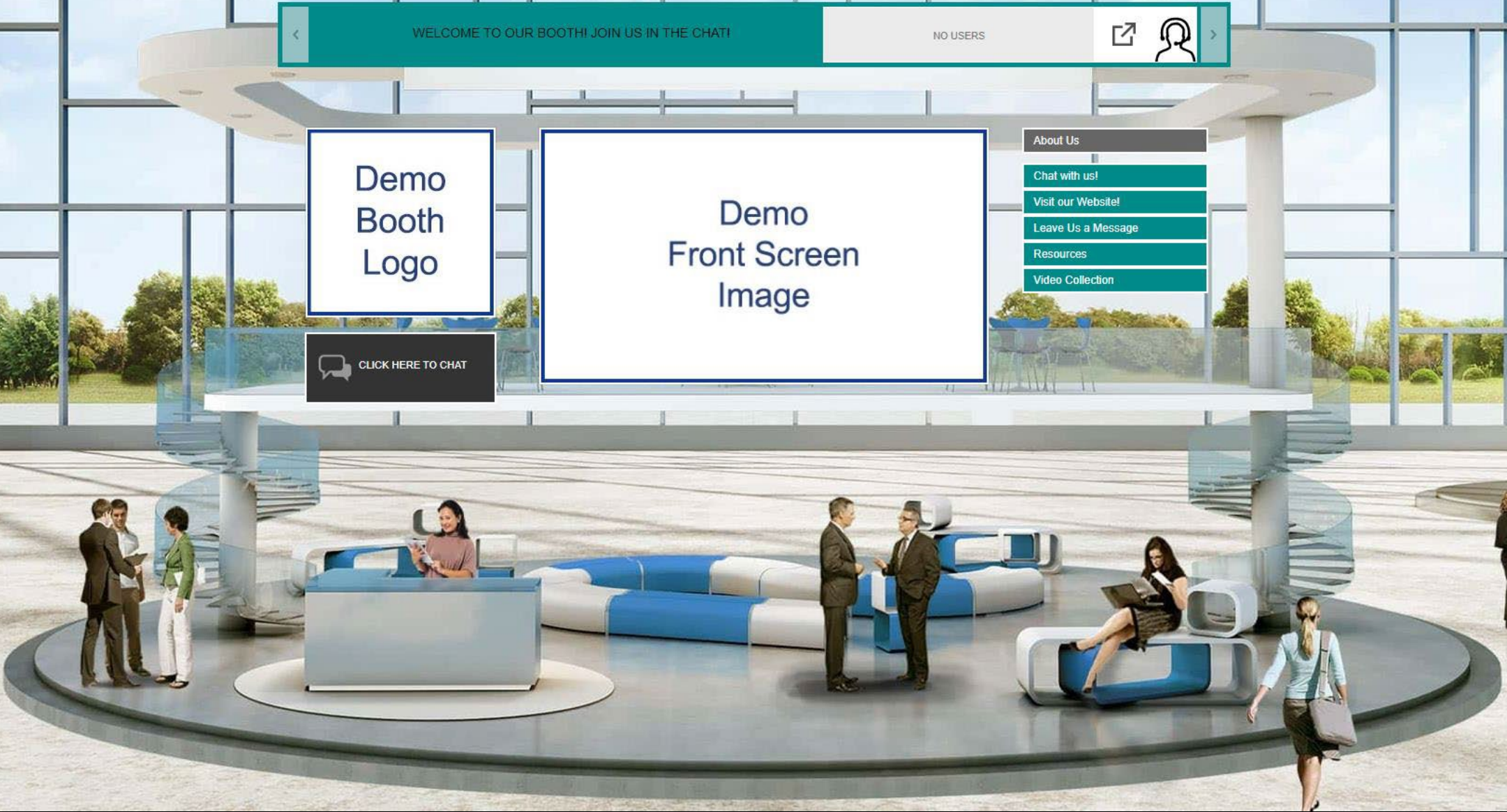
- Participating sites exhibit during *only one* time slot. They *do not* exhibit at *all* sessions.
  - Use the exhibitor list and program listing portal to view the time when the sites you want to see are displaying
  - Not enough time to visit the sites you're most interested in?
    - Ask the program representatives if they are available at another time during the meeting to talk with you.
  - Be respectful of each program's time. Have your questions prepared before you come to the showcase
- ASHP staff will be available to answer your questions
  - Contact us at [showcase@ashp.org](mailto:showcase@ashp.org)
- Good luck to all prospective residents and residency programs for the next residency year!

Demo Booth Logo

Demo Front Screen Image

- About Us
- Chat with us!
- Visit our Website!
- Leave Us a Message
- Resources
- Video Collection

CLICK HERE TO CHAT



# CareerPharm's Personnel Placement Service (PPS)

- Sunday to Thursday, December 5-9: 9 am - 5 pm
  - <https://midyear.ashp.org/pps-candidates>
- Separate from the Residency Showcase
- 30 minute interviews
  - Individual or group
  - Contact ahead of time
  - PPS calendar invites

# CareerPharm's Personnel Placement Service (PPS)

- List of employers:
  - [https://docs.google.com/spreadsheets/d/1\\_HxyhTqL4Tx6LjDdqsJqaVqJ4U1nKiXQX3SlvPSIMiM/edit#gid=0](https://docs.google.com/spreadsheets/d/1_HxyhTqL4Tx6LjDdqsJqaVqJ4U1nKiXQX3SlvPSIMiM/edit#gid=0)
- ASHP PPS Interview Guidance:
  - <https://midyear.ashp.org/pps-candidates/candidate-instructions>
- Good idea to acknowledge all contacts

# Questions to Ask at the Residency Showcase

- How many residents do you have? \*\*
- What are the core & elective rotations? \*\*
- What are required resident activities? \*\*
  - *\*\*All 3 of these should be readily available on the program's website*
  - *\*\*Ask about possible changes*
- What are program strengths & weaknesses? (reword)
- How much time do you spend with your preceptor?
- Do pharmacy students rotate with residents?
- Is there an opportunity for staffing?
  - What are the hours?



# Questions to Ask

- What are the previous residents doing?
- What are they looking for in a resident?
- What benefits do the residents bring to the program?
- What will participation in the program do for me?
- What are the goals of the residency program?
  - Be sure you have looked these up, but verify and ask them to elaborate



# Questions to Ask

- What is the expected preceptor oversight?
  - They may ask you how much you expect!
- Am I able to tailor the program via electives, presentations, teaching, and \_\_\_\_\_ to my future goals?
  - How flexible is the program?
  - Can I change the schedule in the middle of the year if I change my goals?
- What is the interaction with the other healthcare providers, including the physicians and nursing staff?

# Questions to Ask

- What are the current and residency projects?
  - Have they been published?
- Are there teaching opportunities?
- What type of mentoring is available for the research project?
- What is the evaluation process for the residency program?
- What are some changes to the program due to the pandemic?
  - Are any of these permanent changes?

# Questions to Ask Residents

- Would you do this residency again? \*\*\*
- What are the best and worst things about the program?
  - For the worst, how would they change it or what suggestions do they have to improve it?
- How do the current residents get along?
- What is the interaction with the RPD?
  - With the Preceptors?

# Questions to Ask Residents

- How much free time do you have?
- What is there to do around here?
- Safety of the area? (if it is a concern to you)
- Is the program well-balanced?
- Do you feel you have received the experience you wanted and the guidance you needed?

# Helpful CV Hints

- Conservative, 11-14 size font throughout
- Avoid excessive lines, graphics, shading, etc.
- Spelling or grammatical errors
  - Proof, proof, proof . . . . then proof again!!
  - Have numerous people review
    - Peers, faculty members, preceptors