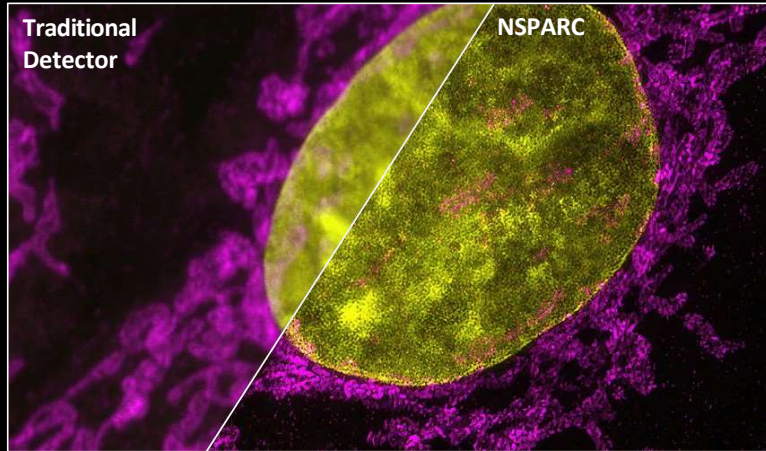




AX / AX R with NSPARC

High Sensitivity and Super-Resolution Confocal with Integrated AI



Seminar: March 15th 12pm - ACB 240

Demo: March 26th - 28th , TTUHSC Imaging Core - 5AB100G

System Highlights:

- **AX R** large field of view and **AI-integrated Confocal**
- **Nikon NSPARC** spatial array confocal detector & **Super-Resolution** module
 - **ECLIPSE Ti2** inverted, fully motorized, large field of view microscope
- Convenient **Stage-top Incubation** for live cell, organoid and organismal imaging
 - Ideal for **high speed**, **high sensitivity** and **high resolution** applications

Please contact Dawn Bender, Ph.D. to schedule time on the system.

Scan the QR code to email dawn.bender@nikon.com



SCAN ME