



Weekly Research Newsletter March 13, 2017

ABSTRACTS DUE THIS WEDNESDAY!

**2017 TTUHSC at the Permian
Basin Research Day
Call for Abstracts**

MEMORANDUM
20th TTUHSC at the Permian Basin Research Day
Thursday, April 20th 2017

Date: February 3, 2017

To: Program directors, department chairs, department research directors, residents, and medical students

From: The office of the Regional Dean of Research and TTUHSC at the Permian Basin Research Advisory Committee

Subject: 2017 TTUHSC at the Permian Basin Research Day – **Call for Abstracts**

Abstracts: The deadline for abstract submission for the 2017 TTUHSC at the Permian Basin Research Day is Wednesday, March 15, 2017. Abstracts and questions should be submitted mlfmsa.eng@permianbasin.ttu.edu and a williamson@permian.ttu.edu

Guidelines for the abstract formatting:

- Include the Title, the Author(s) name (s) and affiliation
- The text of the abstract should be structured to include the following subheadings:
 1. Brief Background
 2. Hypothesis or Objective
 3. Methods
 4. Results or Expected Results
 5. Conclusions or Significance (as appropriate)

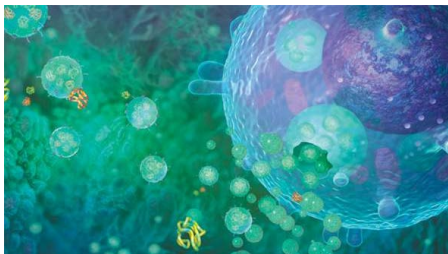
Examples of abstracts from last year can be found at <http://www.ttu.edu/clinicalresearch/documents/2016researchday.pdf>

Research Day: All residents and medical students are encouraged to participate. Presentations will be given in either an oral, pre-recorded or poster format. The Research Advisory Committee will select which abstracts will be given as oral presentations. These presentations will be aided by PowerPoint and be 10 minutes long. Those who wish to participate, but have scheduling conflicts are encouraged to send in their abstracts and present poster-presented presentations. Presentations will be evaluated by judges in different categories – case reports and basic science research. Awards will also be given for authors' abstracts.

The 2017 TTUHSC at the Permian Basin Research Day is being held in conjunction with the University of Texas at the Permian Basin Research Day which will take place on Friday, April 21, 2017. More information about this will be available at a later date.



UPCOMING VISIT



Biography

I am a group leader and senior Lions Medical Research Foundation (LMRF) Fellow working at the UQ Centre for Clinical research (UQCCR). Prior to joining UQCCR, I completed my Bachelor Degree in Biochemistry and a Master's degree in Clinical Biochemistry and Immunology at Universidad de Concepcion (Chile) and a PhD in Medical Science at Pontifical Catholic University of Chile. I have been author of more than 45 journal publications during the period 2011-2016, many of which appear in high-ranking journals in the field (e.g. Diabetes, JCEM, Placenta and FASEB). I am recognized as a national and international researcher working in the field of extracellular vesicles focusing on the reproductive biology (specifically in pregnancy and its complications) and I have been consistently invited as a speaker at both National and International meetings (e.g. Australasia Extracellular Vesicles Society and International Society for Prenatal Diagnosis). Within UQCCR, I have established and lead the **EXOSOME BIOLOGY LABOARTORY** that conforms the ISO standards (ISO17025 and 13185), in which human exosomes can be isolated, characterised and their role elucidated to evaluate their clinical utility as biomarkers of disease and therapeutic interventions.

EXOSOME BIOLOGY LABORATORY (EBL):

The past decade has observed an extraordinary explosion of research in the field of extracellular vesicles (EVs), especially in a specific type of EVs originating from endosomal compartments, called exosomes. Exosomes are a specific subtype of secreted vesicles which are defined as small (~30-120 nm) but very stable membrane vesicles that are released from a wide range of cells, including placental and cancer cells. As the content of exosomes is cell type specific, it is believed that it is a "fingerprint" of the releasing cell and its metabolic status. I hypothesize that the exosomes and their specific exosomal content (e.g. miRNAs and proteins) represent a precious biomedical tool, and may be used as biomarkers for the diagnosis and prognosis of a wide range of disease including complication of pregnancies and malignant tumors. Exosomes may engage in paracellular interactions (i.e. local cell-to-cell communication between the cells) and/or distal interactions (i.e. involving the release of placental or tumor exosomes into biological fluids and transport to a remote site of action). The mechanism involved in these phenomenon remain unclear, however, inhibition of signaling mediators into exosomes or exosome release may reduce their intracellular bioavailability to the parent cell thereby altering cell phenotype and biological function. The aim of the EBL, thus, is to analysis the biogenesis and role of exosomes from placental cells and tumor cells (focusing primarily on ovarian cancer). Poor pregnancy outcome, resulting from a complication of pregnancy is the single most important modifiable risk factor for reducing the current health epidemics of obesity, cardiovascular diseases and diabetes. On the other hand, ovarian cancer is the most lethal gynaecological cancer and an effective early diagnosis has the potential to improve patient survival.

Presentation: "The potential role of exosomes in obstetrics and gynecology: Focus on pregnancy complications and ovarian cancer"

Monday, March 20, 10 a.m.
Room 3168

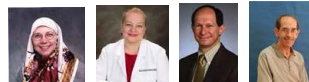
Host Department: Obstetrics and Gynecology (Permian Basin campus)



Congratulations to **Taylor Letbetter** from **Dr. A. Hamood lab (Lubbock campus)**

And co-investigators Aatiya Ahmad, Nithya Mudaliar,

Jane A. Colmer-Hamood, Natalia Schlambritz-Lutsevich, Gary Ventolini, and Abdul Hamood



"Lactobacillus strains inhibit the growth and biofilm development by Pseudomonas aeruginosa,"

winning first place for poster presentation

at the

2017 TTUHSC Student Research Week.

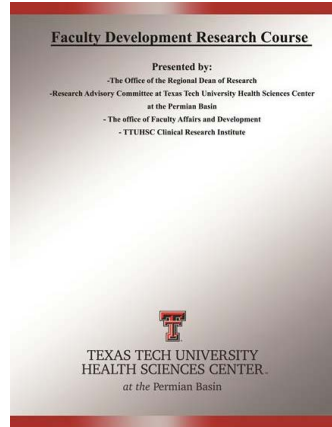
"Translational and Clinical Research – Developing a Research Proposal"

The 12-week intensive course to provide information about developing and publishing a successful research project at TTUHSC at the Permian Basin began last week and will continue until mid-March.

Wednesday, March 15nd, 2017

Room 2C13

For more information about this event, please contact Elihu Arzate at Elihu.arzate@ttuhsc.edu



Research Course Agenda – For Faculty Development Syllabus – January 2017

#	Date and Time	Course Title	Presenter
1	01/04/2017 8:00AM-5:00PM	Introduction The Role of the Clinical Researcher in the 21st Century The Role of the Clinical Researcher in the 21st Century The Role of the Clinical Researcher in the 21st Century The Role of the Clinical Researcher in the 21st Century	Dr. Tom Turner
2	01/05/2017 8:00AM-5:00PM	Dr. Background research and Behavioral Management Systems Behavioral Management Systems Behavioral Management Systems Behavioral Management Systems	Dr. Tom Turner
3	01/06/2017 8:00AM-5:00PM	Building Evidence and How to Address a Research Question Building Evidence and How to Address a Research Question Building Evidence and How to Address a Research Question Building Evidence and How to Address a Research Question	Dr. Tom Turner
4	01/07/2017 8:00AM-5:00PM	Test with an Experimental Design and Experimental Design Test with an Experimental Design and Experimental Design Test with an Experimental Design and Experimental Design Test with an Experimental Design and Experimental Design	Dr. Tom Turner
5	01/08/2017 8:00AM-5:00PM	Test with an Experimental Design and Experimental Design Test with an Experimental Design and Experimental Design Test with an Experimental Design and Experimental Design Test with an Experimental Design and Experimental Design	Dr. Tom Turner
6	01/09/2017 8:00AM-5:00PM	Test with an Experimental Design and Experimental Design Test with an Experimental Design and Experimental Design Test with an Experimental Design and Experimental Design Test with an Experimental Design and Experimental Design	Dr. Tom Turner
7	01/10/2017 8:00AM-5:00PM	Test with an Experimental Design and Experimental Design Test with an Experimental Design and Experimental Design Test with an Experimental Design and Experimental Design Test with an Experimental Design and Experimental Design	Dr. Tom Turner
8	01/11/2017 8:00AM-5:00PM	Test with an Experimental Design and Experimental Design Test with an Experimental Design and Experimental Design Test with an Experimental Design and Experimental Design Test with an Experimental Design and Experimental Design	Dr. Tom Turner
9	01/12/2017 8:00AM-5:00PM	Test with an Experimental Design and Experimental Design Test with an Experimental Design and Experimental Design Test with an Experimental Design and Experimental Design Test with an Experimental Design and Experimental Design	Dr. Tom Turner
10	01/13/2017 8:00AM-5:00PM	Test with an Experimental Design and Experimental Design Test with an Experimental Design and Experimental Design Test with an Experimental Design and Experimental Design Test with an Experimental Design and Experimental Design	Dr. Tom Turner
11	01/14/2017 8:00AM-5:00PM	Test with an Experimental Design and Experimental Design Test with an Experimental Design and Experimental Design Test with an Experimental Design and Experimental Design Test with an Experimental Design and Experimental Design	Dr. Tom Turner
12	01/15/2017 8:00AM-5:00PM	Test with an Experimental Design and Experimental Design Test with an Experimental Design and Experimental Design Test with an Experimental Design and Experimental Design Test with an Experimental Design and Experimental Design	Dr. Tom Turner

12/14/2016

Library Survey

So that the Libraries of the Health Sciences may serve you better, please click the link below to answer this short survey -- (Be sure to sign-up for the random drawing at the end, **one of two \$25 Starbucks gift cards!**)

Also, please do not hesitate to contact Erik or Travis if you have any questions or concerns.

LINK: [Permian Basin Library Survey](#)



West Texas Chapter

Hot Topics

Tuesday, March 21, 2017, 12:00 CST*

TOPIC: Coercion, Inducement, and the Research Subject

SPEAKER: Chad Copeland, MPA, Med, CHRC, CCRP

Research Compliance Officer

Research Integrity Office

Texas Tech University Health Sciences Center

Lubbock, TX

Upon completion of this presentation, the participants will be able to:

1. Discuss the difference between coercion and inducement of potential research subjects
2. Identify ways to keep from exploiting research subjects
3. Discuss the Wage Payment Model of reimbursing research subject

LOCATIONS:

- Lubbock - TTUHSC 1C100
- El Paso - EPCSB B3600 (*11:00 AM MST)
- Amarillo - AMHSC 4717
- Odessa - ODHSC 2C13

For further information: Cathy Lovett, MSN, RN, CCRC, CCRP
806-743-4433

RSVP to Cathy Lovett at: cathy.lovett@ttuhsc.edu

Feel free to bring lunch.

*1.0 Continuing Education Credit hour for SOCRA CCRP Renewal will be awarded to SOCRA members

All SOCRA meetings are open to members and non-members

Save
the
Date

The Division of Integrative Medicine
Office of Interprofessional Education
and the South Institute for Women's Health

8:00 A.M. - 4:00 P.M. APRIL 7TH, 2017

INTEGRATIVE MEDICINE SYMPOSIUM

MIND-BODY WELLNESS
THE SCIENCE, ART, AND PRACTICES

MORNING SESSIONS
Keynote Speakers and Expert Panel

Alejandra Carrasco, MD
Bliss from The Inside Out
Eight-Week Program To
Health & Wellness

Eric Eskin, MD
Integrative Medicine
The Power, Purpose and Practice of
Integrative Medicine in the Healthcare







Panel Discussions
Mind-Body Wellness
A dynamic conversation between
researchers, practitioners and
healthcare providers about mind-body

INTERACTIVE AFTERNOON
Registered Interprofessional Education (IPE) Learning Activities

Mixed Self-Care and
Practitioner-Based Care Topics
Mindfulness, Healing Power of Therapy, Diet,
Behavioral and Mindfulness, Yoga Therapy
Creative Arts for Healthcare

Practitioner-Based
Care Topics
Acupuncture, Dry Needling in Physical
Therapy, Introduction to Body-Tracking
Assessment

REGISTER TODAY
ttuhsc-integrative-medicine-symposium.eventbrite.com

	
	
 <p>Basic Science Journal Club</p>	<p>The Basic Science Journal club will have its next meeting on Thursday, April 6, from 12 p.m. to 1 p.m. in the Dean's Conference Room. For more information about the Basic Science Journal Club, please contact Dr. Kushal Gandhi at Kushal.gandhi@ttuhsc.edu.</p>
<p>2nd Annual Symposium of the Center of Excellence for Translational Neuroscience and Therapeutics</p>	<p>The 2nd Annual Symposium of the Center of Excellence for Translational Neuroscience and Therapeutics (CTNT; http://www.ttuhsc.edu/ctnt/) will be held on Thursday April 27th, 2017. Please join us for a day of science with key note speaker, Dr. Rob Gereau, Washington University in St. Louis, and presentations by Center Members.</p> <p>This event will include a poster competition in the afternoon. Abstracts for this event can be submitted starting Monday, February 27th 2017. Final Deadline for submission is Friday, April 7th, 2017. Please see guidelines below.</p> <ul style="list-style-type: none"> • Topic: Translational research in its broadest sense encompassing basic science or clinical research that may be useful and important for clinically relevant disorders and dysfunctions. Any research actually or potentially related to the focus of the Center on nervous system function, disorders and therapeutics is welcome. • Format: Word document, font size >11pt, not to exceed 1 page; must include title, authors' names and affiliation (TTUHSC/TTU, School, Department/Program, address) • Abstracts will be peer reviewed • Poster awards will be given • Competition is open to all trainees (basic science and clinical) at TTUHSC and TTU • Abstracts and posters from recent local or national meetings (academic year 2015-16) such as Student Research Week may be resubmitted. <p>Please submit abstracts to Tiffany Hancock at tiffany.hancock@ttuhsc.edu, no later than Friday, April 14th, 2017. More details surrounding the event to come in the near future. If you have any questions regarding abstract submission, please contact Dr. Neugebauer, Director of CTNT by email at volker.neugebauer@ttuhsc.edu.</p>
<p>National Academy of Inventors Local Chapter</p>	 <p>TEXAS TECH UNIVERSITY HEALTH SCIENCES CENTER.</p> <p>MEMORANDUM</p> <p>March 1st, 2017</p> <p>TO: TTUHSC Faculty</p> <p>FROM: Tedd L. Mitchell, President</p> <p>RE: National Academy of Inventors Local Chapter</p> <p>I am pleased to introduce the local chapter of the National Academy of Inventors (NAI). This chapter will serve the four component institutions of the Texas Tech University System and its purpose is to honor our academic inventors and to share professional best practices with one another. Those who have been awarded at least one issued U.S. Patent will be invited to a spring banquet, where they will become members in the NAI.</p> <p>If you are a patent holder, or likely soon to be, please visit this link and tell us about your invention(s). Please note the deadline has been extended to March 24th, 2017.</p> <p>If you have a US patent or are in the final stages of obtaining a patent and wish to be considered as a member of this local chapter, please contact one of the following:</p> <ul style="list-style-type: none"> • Dr. Sam Prien sam.prien@ttuhsc.edu (TTUHSC NAI representative) • Dr. Robert Duncan robert.duncan@ttu.edu (Vice President for Strategic Research Initiatives) • Shelley Stevens shelley.stevens@ttu.edu, (806) 834-6740. <p>To learn more about the national organization please visit academyofinventors.org.</p> <p>Thank you for your attention and interest in this exciting opportunity in our continuing quest to discover new knowledge.</p>
<p>Reminder about listing correct author</p>	<p>When listing your affiliation for scholarly publications, <i>please use Texas Tech University Health Sciences Center at the Permian Basin</i>. Using this name will allow for others to more accurately</p>

conference

SAVE THE DATE

April 7, 2017

TTUHSC Integrative Medicine Symposium
Mind-Body Wellness: The art, practices and sciences
Lubbock Campus (morning session will be techlinked)

Sponsored by:
Division of Integrative Medicine
Office of Interprofessional Education
Laura W. Bush for Women's Health Institute, Lubbock
site

Online

Visit TTUHSC at the Permian Basin Research's webpage at: <http://www.ttuhsc.edu/odessa/research/default.aspx>

And like us on Facebook, visit the page: <https://www.facebook.com/Texas-Tech-University-Health-Science-Center-in-the-Permian-Basin-Research-1612649318999433/>



For questions or to submit an item for the research newsletter contact:
Dr. Natalia Schlabritz-Lutsevich, Associate Regional Dean of Research at
natalia.schlabritz-lutsevich@ttuhsc.edu or Melissa Waggoner, Senior Editor
at melissa.waggoner@ttuhsc.edu